

PRODUCT INFORMATION

Target	CGRP
Synonyms	CALC1;CALCA;CGRP-alpha;CGRP-I;CGRP1;CT;KC;PCT
Description	Recombinant Human CGRP Protein with C-terminal human Fc tag
Delivery	In Stock
Uniprot ID	P06881
Expression Host	HEK293
Tag	C-Human Fc Tag
Molecular Characterization	CGRP(Ala83-Phe119) hFc(Glu99-Ala330)
Molecular Weight	The protein has a predicted molecular mass of 29.9 kDa after removal of the signal peptide. The apparent molecular mass of CGRP-hFc is approximately 25-35 kDa due to glycosylation.
Purity	The purity of the protein is greater than 95% as determined by SDS-PAGE and Coomassie blue staining.
Formulation & Reconstitution	Lyophilized from sterile PBS, pH 7.4. Normally 5 % - 8% trehalose is added as protectants before lyophilization. Please see Certificate of Analysis for specific instructions of reconstitution.
Storage&Shipping	Store at -20°C to -80°C for 12 months in lyophilized form. After reconstitution, if not intended for use within a month, aliquot and store at -80°C (Avoid repeated freezing and thawing). Lyophilized proteins are shipped at ambient temperature.
Background	This gene encodes the peptide hormones calcitonin, calcitonin gene-related peptide and katacalcin by tissue-specific alternative RNA splicing of the gene transcripts and cleavage of inactive precursor proteins. Calcitonin is involved in calcium regulation and acts to regulate phosphorus metabolism. Calcitonin gene-related peptide functions as a vasodilator and as an antimicrobial peptide while katacalcin is a calcium-lowering peptide. Multiple transcript variants encoding different isoforms have been found for this gene.[provided by RefSeq, Aug 2014]
Usage	Research use only
Conjugate	Unconjugated



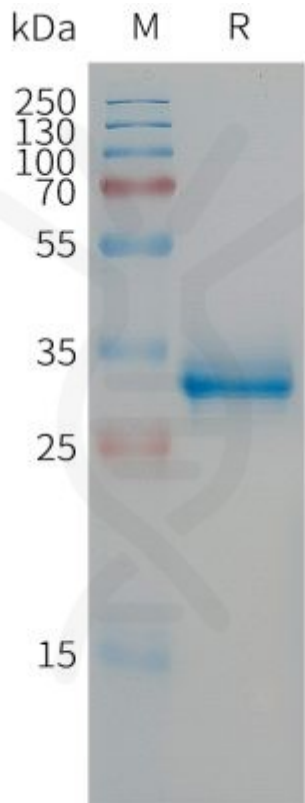


Figure 1.Human CGRP Protein, hFc Tag on SDS-PAGE under reducing condition.

