

PRODUCT INFORMATION

| | |
|------------------------------|---|
| Target | CEACAM6 |
| Synonyms | CD66c;CEAL;NCA |
| Description | Recombinant human CEACAM6 protein with C-terminal 6×His tag |
| Delivery | In Stock |
| Uniprot ID | P40199 |
| Expression Host | HEK293 |
| Tag | C-6×His Tag |
| Molecular Characterization | CEACAM6(Lys35-Gly320) 6×His tag |
| Molecular Weight | The protein has a predicted molecular mass of 32.1 kDa after removal of the signal peptide. The apparent molecular mass of CEACAM6-His is approximately 35-55 kDa due to glycosylation. |
| Purity | The purity of the protein is greater than 85% as determined by SDS-PAGE and Coomassie blue staining. |
| Formulation & Reconstitution | Lyophilized from sterile PBS, pH 7.4. Normally 5 % - 8% trehalose is added as protectants before lyophilization. Please see Certificate of Analysis for specific instructions of reconstitution. |
| Storage&Shipping | Store at -20°C to -80°C for 12 months in lyophilized form. After reconstitution, if not intended for use within a month, aliquot and store at -80°C (Avoid repeated freezing and thawing). Lyophilized proteins are shipped at ambient temperature. |
| Background | This gene encodes a protein that belongs to the carcinoembryonic antigen (CEA) family whose members are glycosyl phosphatidyl inositol (GPI) anchored cell surface glycoproteins. Members of this family play a role in cell adhesion and are widely used as tumor markers in serum immunoassay determinations of carcinoma. This gene affects the sensitivity of tumor cells to adenovirus infection. The protein encoded by this gene acts as a receptor for adherent-invasive E. coli adhesion to the surface of ileal epithelial cells in patients with Crohn's disease. This gene is clustered with genes and pseudogenes of the cell adhesion molecules subgroup of the CEA family on chromosome 19. [provided by RefSeq, Apr 2014] |
| Usage | Research use only |
| Conjugate | Unconjugated |



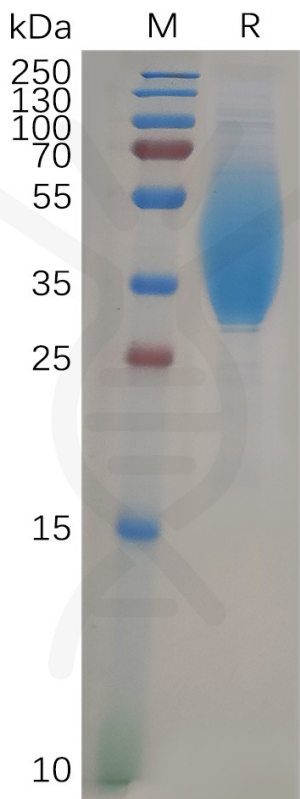


Figure 1. Human CEACAM6 Protein, His Tag on SDS-PAGE under reducing condition.

Human CEACAM6, His Tagged protein ELISA
0.2 µg of Human CEACAM6, His tagged protein per well

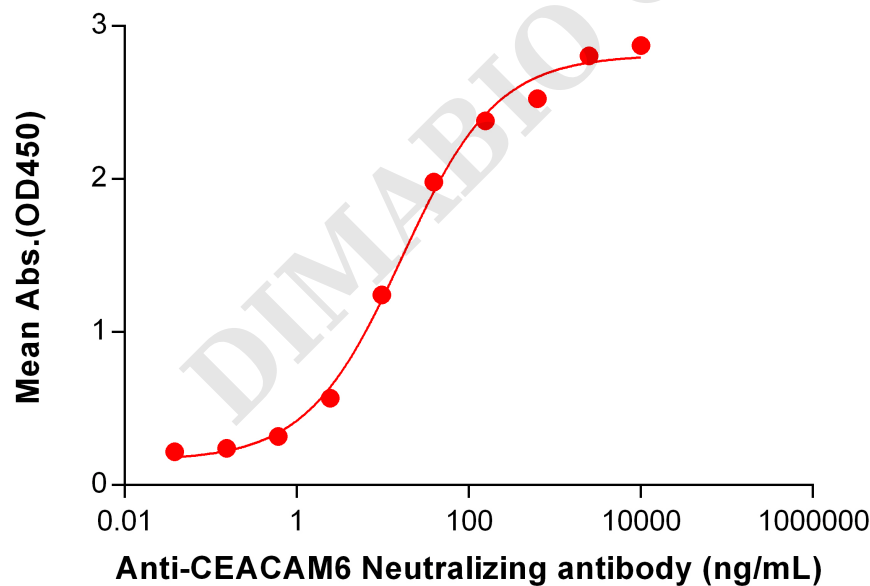


Figure 2. ELISA plate pre-coated by 2 µg/mL (100 µL/well) Human CEACAM6 Protein, His Tag (PME100822) can bind Anti-CEACAM6 Neutralizing antibody BME100100 in a linear range of 0.61-156.25 ng/mL.

