

PRODUCT INFORMATION

Target	CDH6
Synonyms	CAD6; KCAD
Description	Recombinant human CDH6(384-486) Protein with C-terminal human Fc tag
Delivery	In Stock
Uniprot ID	P55285
Expression Host	HEK293
Tag	C-Human Fc tag
Molecular Characterization	CDH6(Ser384-Pro486) hFc(Glu99-Ala330)
Molecular Weight	The protein has a predicted molecular mass of 37.7 kDa after removal of the signal peptide.
Purity	The purity of the protein is greater than 90% as determined by SDS-PAGE and Coomassie blue staining.
Formulation & Reconstitution	Lyophilized from sterile PBS, pH 7.4. Normally 5 % - 8% trehalose is added as protectants before lyophilization. Please see Certificate of Analysis for specific instructions of reconstitution.
Storage&Shipping	Store at -20°C to -80°C for 12 months in lyophilized form. After reconstitution, if not intended for use within a month, aliquot and store at -80°C (Avoid repeated freezing and thawing). Lyophilized proteins are shipped at ambient temperature.
Background	This gene encodes a member of the cadherin superfamily. Cadherins are membrane glycoproteins that mediate homophilic cell-cell adhesion and play critical roles in cell differentiation and morphogenesis. The encoded protein is a type II cadherin and may play a role in kidney development as well as endometrium and placenta formation. Decreased expression of this gene may be associated with tumor growth and metastasis. [provided by RefSeq, May 2011]
Usage	Research use only
Conjugate	Unconjugated



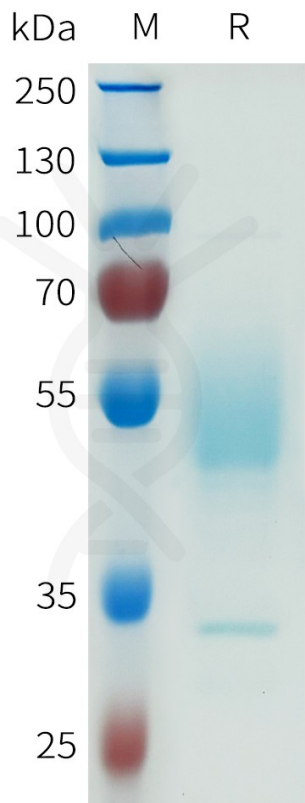


Figure 1. Human CDH6(384-486) Protein, hFc Tag on SDS-PAGE under reducing condition.

