

PRODUCT INFORMATION

Target	CDH17
Synonyms	CDH16;HPT-1;HPT1
Description	Recombinant human CDH17(567-667) Protein with C-terminal human Fc tag
Delivery	In Stock
Uniprot ID	Q12864
Expression Host	HEK293
Tag	C-Human Fc Tag
Molecular Characterization	CDH17(Ser567-Leu667) hFc(Glu99-Ala330)
Molecular Weight	The protein has a predicted molecular mass of 37.0 kDa after removal of the signal peptide. The apparent molecular mass of CDH17(567-667)-hFc is approximately 35-55 kDa due to glycosylation.
Purity	The purity of the protein is greater than 95% as determined by SDS-PAGE and Coomassie blue staining.
Formulation & Reconstitution	Lyophilized from sterile PBS, pH 7.4. Normally 5 % - 8% trehalose is added as protectants before lyophilization. Please see Certificate of Analysis for specific instructions of reconstitution.
Storage&Shipping	Store at -20°C to -80°C for 12 months in lyophilized form. After reconstitution, if not intended for use within a month, aliquot and store at -80°C (Avoid repeated freezing and thawing). Lyophilized proteins are shipped at ambient temperature.
Background	This gene is a member of the cadherin superfamily, genes encoding calcium-dependent, membrane-associated glycoproteins. The encoded protein is cadherin-like, consisting of an extracellular region, containing 7 cadherin domains, and a transmembrane region but lacking the conserved cytoplasmic domain. The protein is a component of the gastrointestinal tract and pancreatic ducts, acting as an intestinal proton-dependent peptide transporter in the first step in oral absorption of many medically important peptide-based drugs. The protein may also play a role in the morphological organization of liver and intestine. Alternative splicing results in multiple transcript variants. [provided by RefSeq, Jan 2009]
Usage	Research use only
Conjugate	Unconjugated



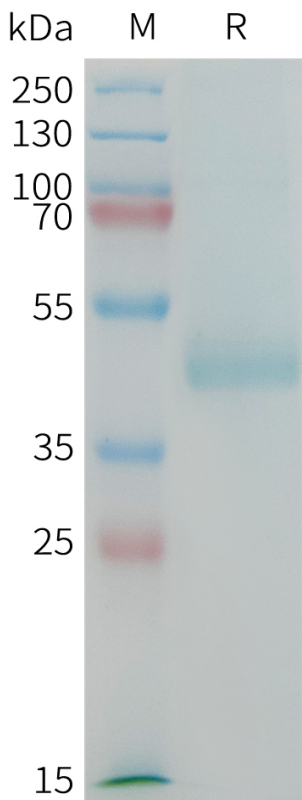


Figure 1. Human CDH17(567-667) Protein, hFc Tag on SDS-PAGE under reducing condition.

Human CDH17(567-667), hFc Tagged protein ELISA
0.2 µg of Human CDH17(567-667), hFc tagged protein per well

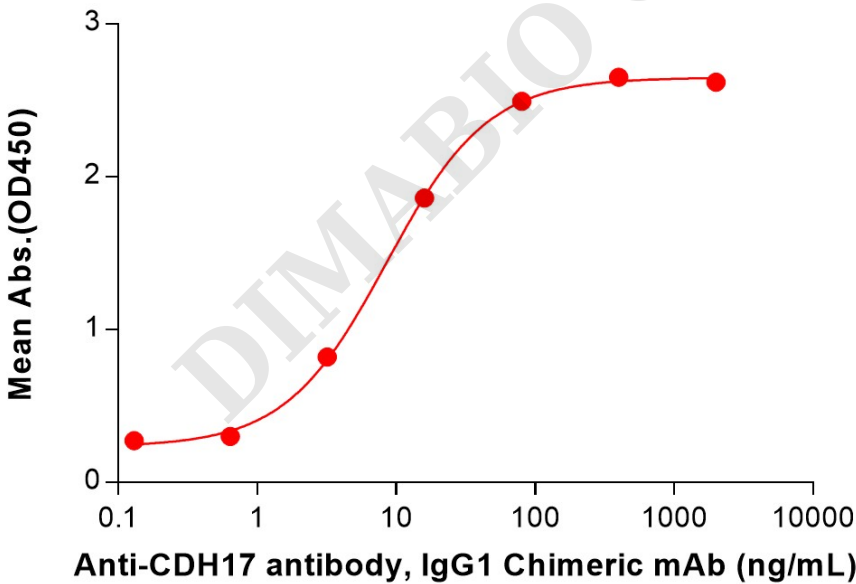


Figure 2. ELISA plate pre-coated by 2 µg/mL (100 µL/well) Human CDH17(567-667) Protein, hFc Tag (PME100199) can bind Anti-CDH17 antibody, IgG1 Chimeric mAb in a linear range of 0.64-80 ng/mL.

