

PRODUCT INFORMATION

Target	CD59
Synonyms	HRF20;MAC-IP;MACIF;MIRL;MIC11;MIN1;MIN2;MIN3;MSK21
Description	Recombinant human CD59 protein with C-terminal human Fc tag
Delivery	In Stock
Uniprot ID	P13987
Expression Host	HEK293
Tag	C-Human Fc Tag
Molecular Characterization	CD59(Leu26-Asn102) hFc(Glu99-Ala330)
Molecular Weight	The protein has a predicted molecular mass of 35.1 kDa after removal of the signal peptide. The apparent molecular mass of CD59-hFc is approximately 40-53 kDa due to glycosylation.
Purity	The purity of the protein is greater than 95% as determined by SDS-PAGE and Coomassie blue staining.
Formulation & Reconstitution	Lyophilized from sterile PBS, pH 7.4. Normally 5 % - 8% trehalose is added as protectants before lyophilization. Please see Certificate of Analysis for specific instructions of reconstitution.
Storage&Shipping	Store at -20°C to -80°C for 12 months in lyophilized form. After reconstitution, if not intended for use within a month, aliquot and store at -80°C (Avoid repeated freezing and thawing). Lyophilized proteins are shipped at ambient temperature.
Background	This gene encodes a cell surface glycoprotein that regulates complement-mediated cell lysis, and it is involved in lymphocyte signal transduction. This protein is a potent inhibitor of the complement membrane attack complex, whereby it binds complement C8 and/or C9 during the assembly of this complex, thereby inhibiting the incorporation of multiple copies of C9 into the complex, which is necessary for osmolytic pore formation. This protein also plays a role in signal transduction pathways in the activation of T cells. Mutations in this gene cause CD59 deficiency, a disease resulting in hemolytic anemia and thrombosis, and which causes cerebral infarction. Multiple alternatively spliced transcript variants, which encode the same protein, have been identified for this gene. [provided by RefSeq, Jul 2008]
Usage	Research use only
Conjugate	Unconjugated



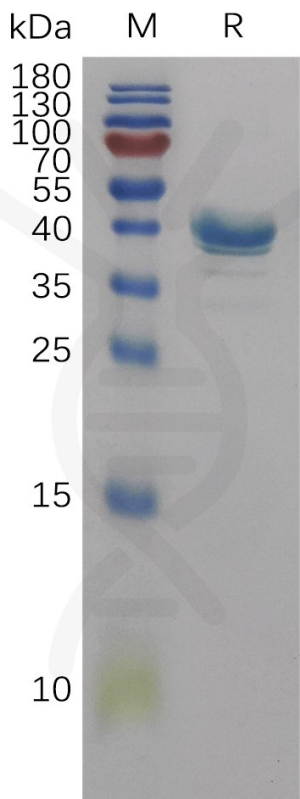


Figure 1. Human CD59 Protein, hFc Tag on SDS-PAGE under reducing condition.

