

PRODUCT INFORMATION

Target	CD48
Synonyms	CD48;BCM1;SLAMF2;BLAST;BLAST1;MEM-102;TCT.1;BCM-1;SLAMF-2;BLAST-1
Description	Recombinant human CD48 protein with C-terminal mouse Fc and 6×His
Delivery	In Stock
Uniprot ID	P09326
Expression Host	HEK293
Tag	C-Mouse Fc and 6×His Tag
Molecular Characterization	CD48(Gln27-Ser220) mFc(Pro99-Lys330) 6×His
Molecular Weight	The protein has a predicted molecular mass of 69-72 kDa after removal of the signal peptide.
Purity	The purity of the protein is greater than 95% as determined by SDS-PAGE and Coomassie blue staining.
Formulation & Reconstitution	Lyophilized from sterile PBS, pH 7.4. Normally 5 % – 8% trehalose is added as protectants before lyophilization. Please see Certificate of Analysis for specific instructions of reconstitution.
Storage&Shipping	Store at -20°C to -80°C for 12 months in lyophilized form. After reconstitution, if not intended for use within a month, aliquot and store at -80°C (Avoid repeated freezing and thawing). Lyophilized proteins are shipped at ambient temperature.
Background	This gene encodes a member of the CD2 subfamily of immunoglobulin-like receptors which includes SLAM (signaling lymphocyte activation molecules) proteins. The encoded protein is found on the surface of lymphocytes and other immune cells, dendritic cells and endothelial cells, and participates in activation and differentiation pathways in these cells. The encoded protein does not have a transmembrane domain, however, but is held at the cell surface by a GPI anchor via a C-terminal domain which maybe cleaved to yield a soluble form of the receptor. Multiple transcript variants encoding different isoforms have been found for this gene.
Usage	Research use only
Conjugate	Unconjugated



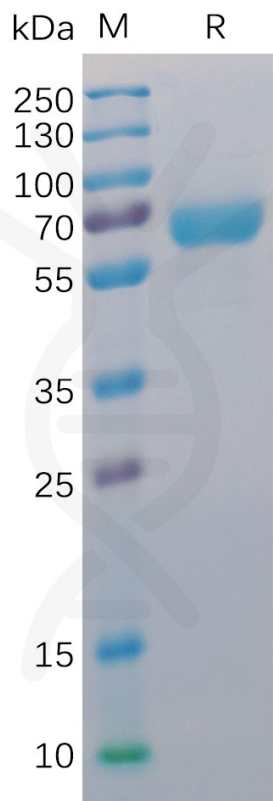


Figure 1. Human CD48 Protein, mFc-His Tag on SDS-PAGE under reducing condition.

Human CD48, mFc-His Tagged protein ELISA
0.2 µg of 2B4, hFc Tagged protein per well

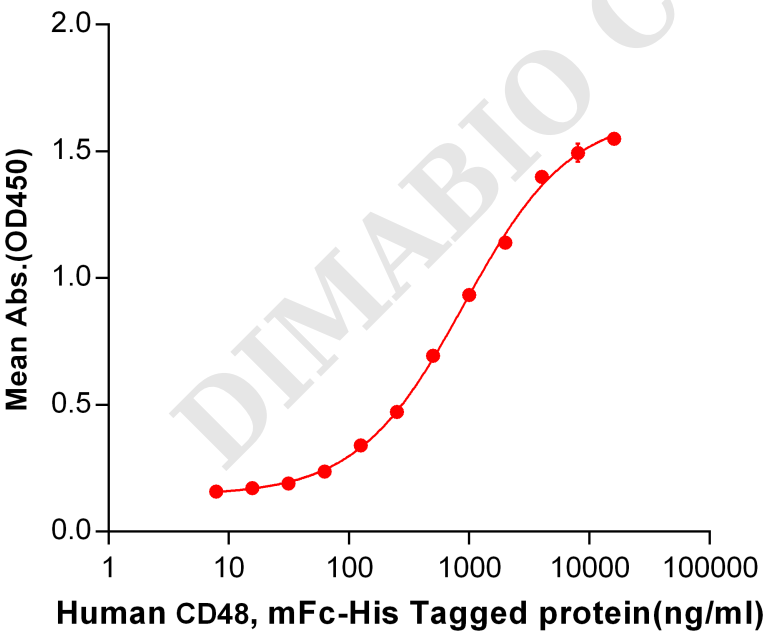


Figure 2. ELISA plate pre-coated by 2 µg/ml (100 µl/well) Human CD48, mFc-His tagged protein (PME100016) can bind Human 2B4, hFc tagged protein PME100477 in a linear range of 62.5-4000 ng/ml.

