

PRODUCT INFORMATION

Target	CD40 Ligand
Synonyms	CD40LG;CD154;CD40L;HIGM1;IGM;IMD3;T-BAM;TNFSF5;TRAP;gp39
Description	Recombinant human CD40 Ligand Protein with N-terminal Human Fc tag
Delivery	In Stock
Uniprot ID	P29965
Expression Host	HEK293
Tag	N-Human Fc Tag
Molecular Characterization	hFc(Glu99-Ala330) CD40 Ligand(Met113-Leu261)
Molecular Weight	The protein has a predicted molecular mass of 42.3 kDa after removal of the signal peptide.The apparent molecular mass of hFc-CD40 Ligand is approximately 40-53 kDa due to glycosylation.
Purity	The purity of the protein is greater than 95% as determined by SDS-PAGE and Coomassie blue staining.
Formulation & Reconstitution	Lyophilized from sterile PBS, pH 7.4. Normally 5 % - 8% trehalose is added as protectants before lyophilization. Please see Certificate of Analysis for specific instructions of reconstitution.
Storage & Shipping	Store at -20°C to -80°C for 12 months in lyophilized form. After reconstitution, if not intended for use within a month, aliquot and store at -80°C (Avoid repeated freezing and thawing). Lyophilized proteins are shipped at ambient temperature.
Background	The protein encoded by this gene is expressed on the surface of T cells. It regulates B cell function by engaging CD40 on the B cell surface. A defect in this gene results in an inability to undergo immunoglobulin class switch and is associated with hyper-IgM syndrome.
Usage	Research use only
Conjugate	Unconjugated



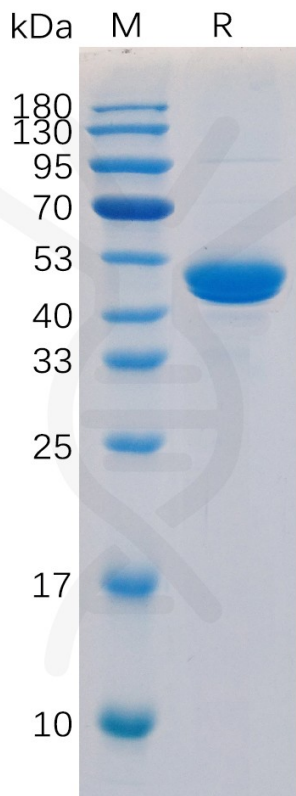


Figure 1. Human CD40 Ligand Protein, hFc Tag on SDS-PAGE under reducing condition.

**Human CD40 Ligand, hFc Tagged protein ELISA**

0.2 µg of CD40 Ligand, hFc Tagged protein per well

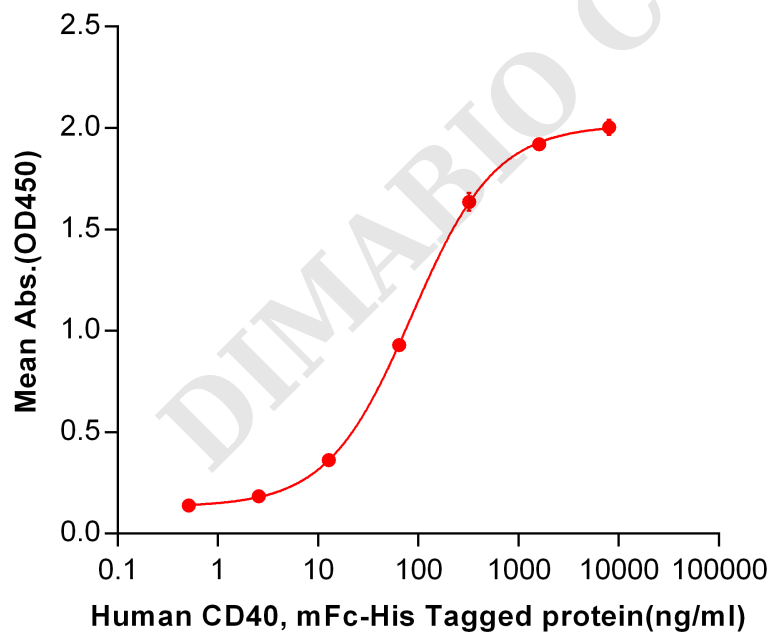


Figure 2. ELISA plate pre-coated by 2 µg/ml (100 µl/well) Human CD40 Ligand,hFc tagged protein (PME100192) can bind Human CD40, mFc-His tagged protein PME100015 in a linear range of 0.51-320 ng/ml.



**Human CD40 Ligand, hFc Tagged protein ELISA**  
0.2 µg of Human CD40 Ligand, hFc Tagged protein per well

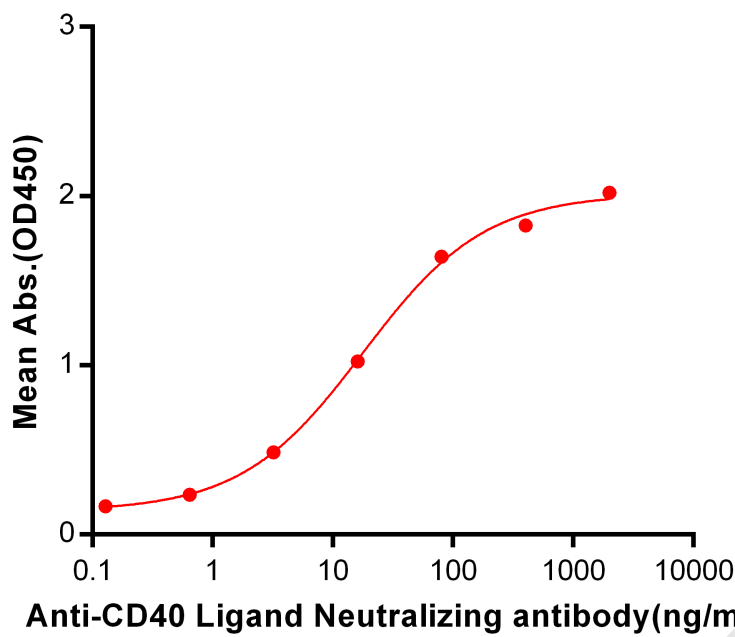


Figure 3. ELISA plate pre-coated by 2 µg/ml (100 µl/well) Human CD40L, hFc tagged protein (PME100192) can bind Anti-CD40L Neutralizing antibody BME100042 in a linear range of 0.64-400 ng/ml.

