

PRODUCT INFORMATION

| | |
|------------------------------|--|
| Target | CD2 |
| Synonyms | T11; SRBC; LFA-2 |
| Description | Recombinant human CD2 Protein with C-terminal 10×His tag |
| Delivery | In Stock |
| Uniprot ID | P06729 |
| Expression Host | HEK293 |
| Tag | C-10×His tag |
| Molecular Characterization | CD2(Lys25-Asp209) 10×His tag |
| Molecular Weight | The protein has a predicted molecular mass of 22.6 kDa after removal of the signal peptide. The apparent molecular mass of CD2-His is approximately 25-55 kDa due to glycosylation. |
| Purity | The purity of the protein is greater than 85% as determined by SDS-PAGE and Coomassie blue staining. |
| Formulation & Reconstitution | Lyophilized from sterile PBS, pH 7.4. Normally 5 % - 8% trehalose is added as protectants before lyophilization. Please see Certificate of Analysis for specific instructions of reconstitution. |
| Storage&Shipping | Store at -20°C to -80°C for 12 months in lyophilized form. After reconstitution, if not intended for use within a month, aliquot and store at -80°C (Avoid repeated freezing and thawing). Lyophilized proteins are shipped at ambient temperature. |
| Background | The protein encoded by this gene is a surface antigen found on all peripheral blood T-cells. The encoded protein interacts with LFA3 (CD58) on antigen presenting cells to optimize immune recognition. A locus control region (LCR) has been found in the 3' flanking sequence of this gene. [provided by RefSeq, Jun 2016] |
| Usage | Research use only |
| Conjugate | Unconjugated |



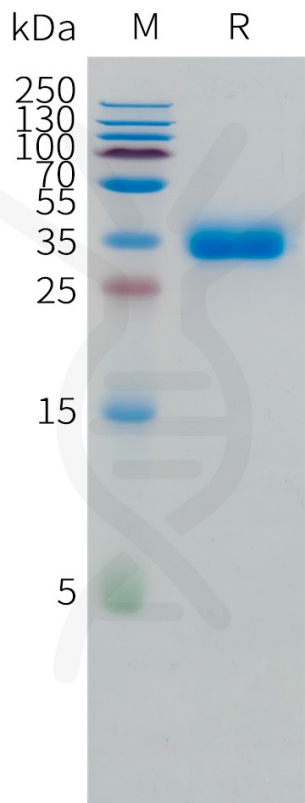


Figure 1. Human CD2 Protein, His Tag on SDS-PAGE under reducing condition.

