

PRODUCT INFORMATION

Target	CD2
Synonyms	LFA-2;SRBC;T11
Description	Recombinant Human CD2 Protein with C-terminal human Fc tag
Delivery	In Stock
Uniprot ID	P06729
Expression Host	HEK293
Tag	C-Human Fc Tag
Molecular Characterization	CD2(Lys25-Asp209) hFc(Glu99-Ala330)
Molecular Weight	The protein has a predicted molecular mass of 47.4 kDa after removal of the signal peptide. The apparent molecular mass of CD2-hFc is approximately 55-70 kDa due to glycosylation.
Purity	The purity of the protein is greater than 90% as determined by SDS-PAGE and Coomassie blue staining.
Formulation & Reconstitution	Lyophilized from sterile PBS, pH 7.4. Normally 5 % - 8% trehalose is added as protectants before lyophilization. Please see Certificate of Analysis for specific instructions of reconstitution.
Storage & Shipping	Store at -20°C to -80°C for 12 months in lyophilized form. After reconstitution, if not intended for use within a month, aliquot and store at -80°C (Avoid repeated freezing and thawing). Lyophilized proteins are shipped at ambient temperature.
Background	The protein encoded by this gene is a surface antigen found on all peripheral blood T-cells. The encoded protein interacts with LFA3 (CD58) on antigen presenting cells to optimize immune recognition. A locus control region (LCR) has been found in the 3' flanking sequence of this gene. [provided by RefSeq, Jun 2016]
Usage	Research use only
Conjugate	Unconjugated



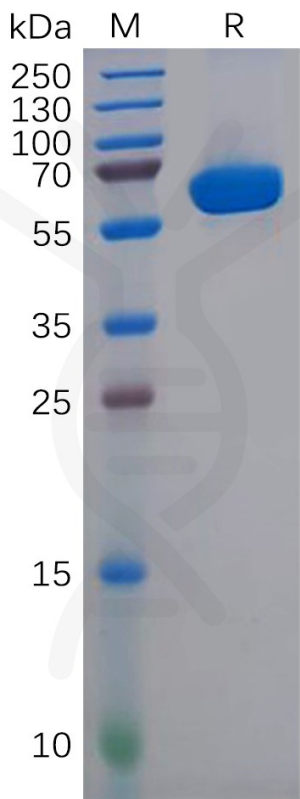


Figure 1. Human CD2 Protein, hFc Tag on SDS-PAGE under reducing condition.

Human CD2, hFc Tagged protein ELISA
0.2 µg of Human CD2, hFc tagged protein per well

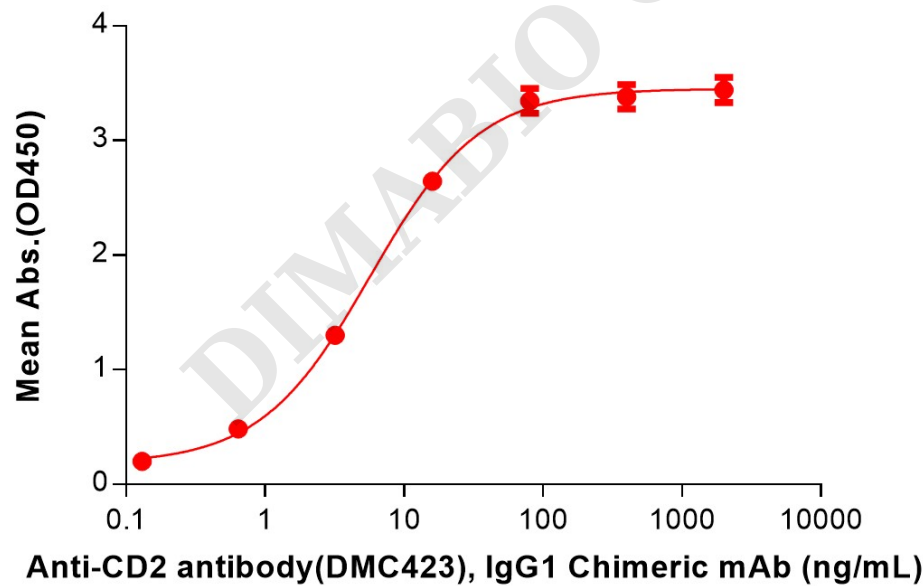


Figure 2. ELISA plate pre-coated by 2 µg/mL (100 µL/well) Human CD2 Protein, hFc Tag (PME100595) can bind Anti-CD2 antibody(DMC423), IgG1 Chimeric mAb in a linear range of 0.64-16 ng/mL.



Human CD2, hFc Tagged protein ELISA

0.2 μ g of Human CD58, His tagged protein per well

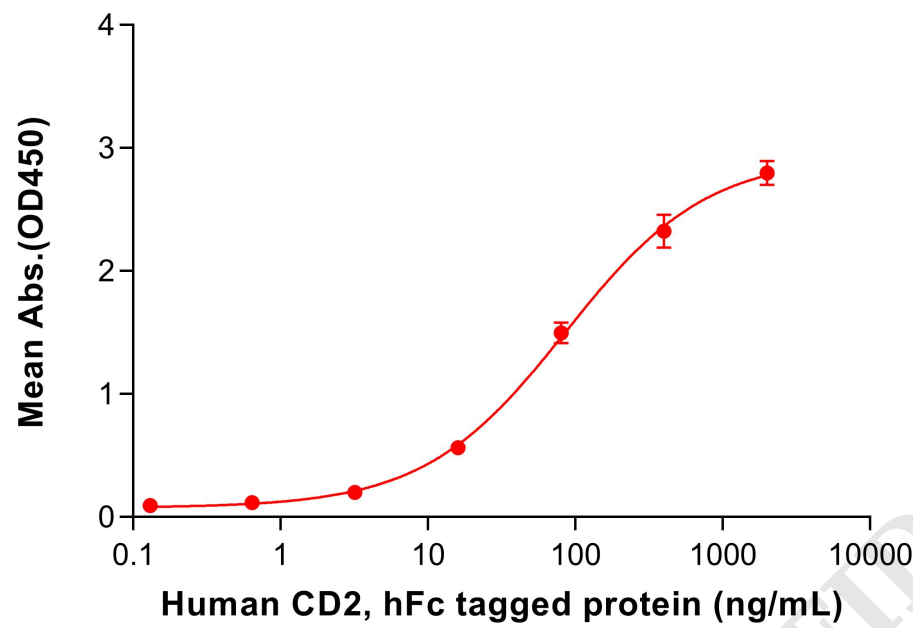


Figure 3. ELISA plate pre-coated by 2 μ g/mL (100 μ L/well) Human CD58 Protein, His Tag (PME101761) can bind Human CD2 Protein, hFc Tag (PME100595) in a linear range of 16-80 ng/mL.

