

PRODUCT INFORMATION

Target	CCR4
Synonyms	CC-CKR-4;CD194;ChemR13;CKR4;CMKBR4;HGCN:14099;K5-5
Description	Recombinant human CCR4(1-39) protein with C-terminal mouse Fc tag
Delivery	In Stock
Uniprot ID	P51679
Expression Host	HEK293
Tag	C-Mouse Fc Tag
Molecular Characterization	CCR4(Met1-Glu39) mFc(Pro99-Lys330)
Molecular Weight	The protein has a predicted molecular mass of 30.7 kDa after removal of the signal peptide. The apparent molecular mass of CCR4(1-39)-mFc is approximately 35-55 kDa due to glycosylation.
Purity	The purity of the protein is greater than 95% as determined by SDS-PAGE and Coomassie blue staining.
Formulation & Reconstitution	Lyophilized from sterile PBS, pH 7.4. Normally 5 % - 8% trehalose is added as protectants before lyophilization. Please see Certificate of Analysis for specific instructions of reconstitution.
Storage&Shipping	Store at -20°C to -80°C for 12 months in lyophilized form. After reconstitution, if not intended for use within a month, aliquot and store at -80°C (Avoid repeated freezing and thawing). Lyophilized proteins are shipped at ambient temperature.
Background	The protein encoded by this gene belongs to the G-protein-coupled receptor family . It is a receptor for the CC chemokine - MIP-1, RANTES, TARC and MCP-1. Chemokines are a group of small polypeptide, structurally related molecules that regulate cell trafficking of various types of leukocytes. The chemokines also play fundamental roles in the development, homeostasis, and function of the immune system, and they have effects on cells of the central nervous system as well as on endothelial cells involved in angiogenesis or angiostasis. [provided by RefSeq, Jul 2008]
Usage	Research use only
Conjugate	Unconjugated



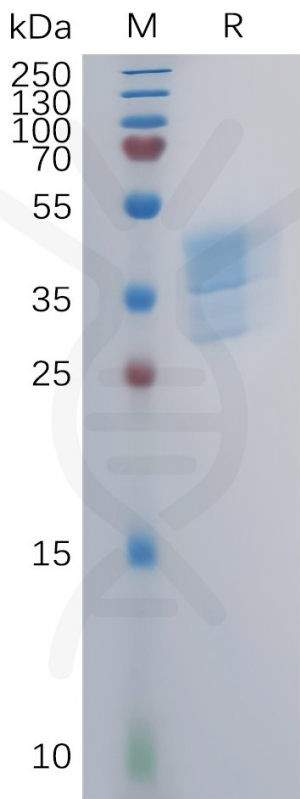


Figure 1. Human CCR4(1-39) Protein, mFc Tag on SDS-PAGE under reducing condition.

Human CCR4(1-39), mFc Tagged protein ELISA

0.2 μ g of Human CCR4(1-39), mFc tagged protein per well

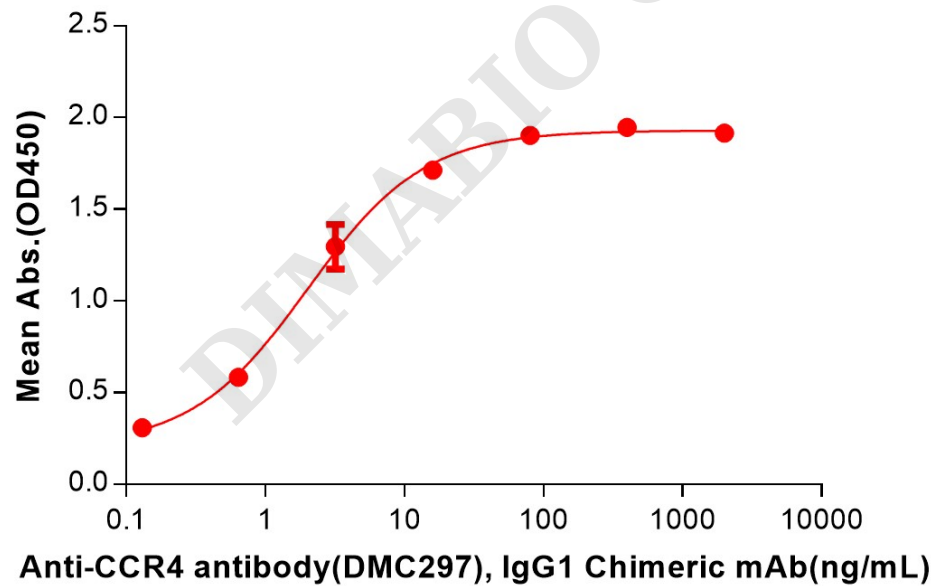


Figure 2. ELISA plate pre-coated by 2 μ g/mL (100 μ L/well) Human CCR4(1-39) Protein, mFc Tag (PME101112) can bind Anti-CCR4 antibody(DMC297), IgG1 Chimeric mAb in a linear range of 0.64–16 ng/mL.

