

PRODUCT INFORMATION

Target	CCL5
Synonyms	SISd; eoCP; SCYA5; RANTES; TCP228; D17S136E; SIS-delta
Description	Recombinant human CCL5 Protein with C-terminal human Fc tag
Delivery	In Stock
Uniprot ID	P13501
Expression Host	HEK293
Tag	C-Human Fc tag
Molecular Characterization	CCL5(Ser24-Ser91) hFc(Glu99-Ala330)
Molecular Weight	The protein has a predicted molecular mass of 34.0 kDa after removal of the signal peptide. The apparent molecular mass of CCL5-hFc is approximately 35-55 kDa due to glycosylation.
Purity	The purity of the protein is greater than 95% as determined by SDS-PAGE and Coomassie blue staining.
Formulation & Reconstitution	Lyophilized from sterile PBS, pH 7.4. Normally 5 % - 8% trehalose is added as protectants before lyophilization. Please see Certificate of Analysis for specific instructions.
Storage&Shipping	Store at -20°C to -80°C for 12 months in lyophilized form. After reconstitution, if not intended for use within a month, aliquot and store at -80°C (Avoid repeated freezing and thawing).Lyophilized proteins are shipped at ambient temperature.
Background	This gene is one of several chemokine genes clustered on the q-arm of chromosome 17. Chemokines form a superfamily of secreted proteins involved in immunoregulatory and inflammatory processes. The superfamily is divided into four subfamilies based on the arrangement of the N-terminal cysteine residues of the mature peptide. This chemokine, a member of the CC subfamily, functions as a chemoattractant for blood monocytes, memory T helper cells and eosinophils. It causes the release of histamine from basophils and activates eosinophils. This cytokine is one of the major HIV-suppressive factors produced by CD8+ cells. It functions as one of the natural ligands for the chemokine receptor chemokine (C-C motif) receptor 5 (CCR5), and it suppresses in vitro replication of the R5 strains of HIV-1, which use CCR5 as a coreceptor. Alternative splicing results in multiple transcript variants that encode different isoforms. [provided by RefSeq, Jul 2013]
Usage	Research use only
Conjugate	Unconjugated



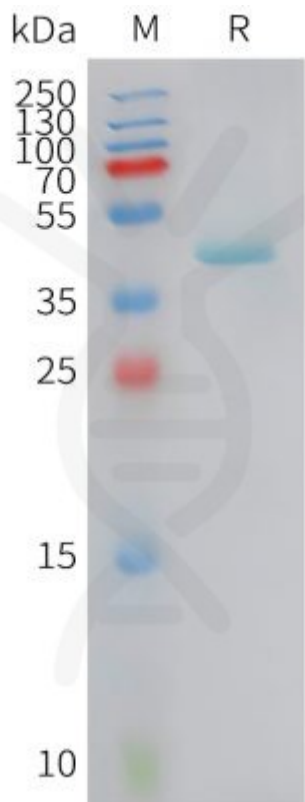


Figure 1. Human CCL5 Protein, hFc Tag on SDS-PAGE under reducing condition.

