

PRODUCT INFORMATION

Target	C2
Synonyms	CO2;ARMD14
Description	Recombinant human C2 Protein with C-terminal 6×His tag
Delivery	In Stock
Uniprot ID	P06681
Expression Host	HEK293
Tag	C-6×His Tag
Molecular Characterization	C2(Ala21-Leu752) 6×His tag
Molecular Weight	The protein has a predicted molecular mass of 81.9 kDa after removal of the signal peptide. The apparent molecular mass of C2-His is approximately 100-130 kDa due to glycosylation.
Purity	The purity of the protein is greater than 85% as determined by SDS-PAGE and Coomassie blue staining.
Formulation & Reconstitution	Lyophilized from sterile PBS, pH 7.4. Normally 5 % - 8% trehalose is added as protectants before lyophilization. Please see Certificate of Analysis for specific instructions of reconstitution.
Storage & Shipping	Store at -20°C to -80°C for 12 months in lyophilized form. After reconstitution, if not intended for use within a month, aliquot and store at -80°C (Avoid repeated freezing and thawing). Lyophilized proteins are shipped at ambient temperature.
Background	Component C2 is a serum glycoprotein that functions as part of the classical pathway of the complement system. Activated C1 cleaves C2 into C2a and C2b. The serine proteinase C2a then combines with complement factor 4b to create the C3 or C5 convertase. Deficiency of C2 has been reported to associated with certain autoimmune diseases and SNPs in this gene have been associated with altered susceptibility to age-related macular degeneration. This gene localizes within the class III region of the MHC on the short arm of chromosome 6. Alternative splicing results in multiple transcript variants encoding distinct isoforms. Additional transcript variants have been described in publications but their full-length sequence has not been determined.[provided by RefSeq, Mar 2009]
Usage	Research use only
Conjugate	Unconjugated



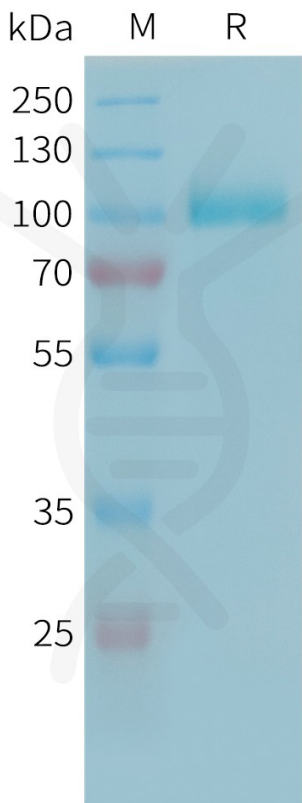


Figure 1. Human C2 Protein, His Tag on SDS-PAGE under reducing condition.

**Human C2, His Tagged protein ELISA**  
0.2  $\mu$ g of Human C2, His tagged protein per well

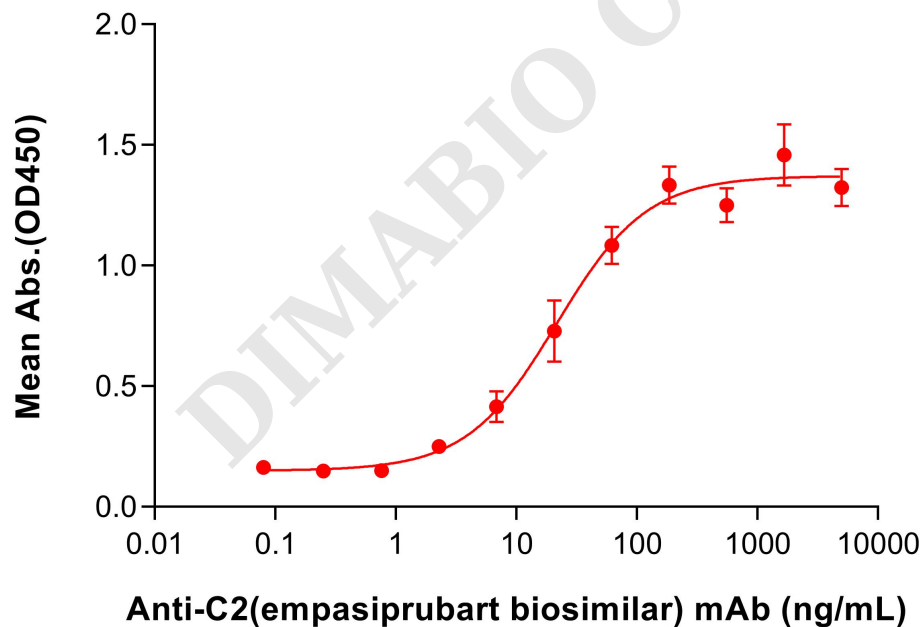


Figure 2. ELISA plate pre-coated by 2  $\mu$ g/mL (100  $\mu$ L/well) Human C2 Protein, His Tag (PME101342) can bind Anti-C2(empasiprubart biosimilar) mAb (BME100491) in a linear range of 6.86-61.73 ng/mL.

