

PRODUCT INFORMATION

Target	C1S
Synonyms	EDSPD2
Description	Recombinant human C1S Protein with C-terminal 6×His tag
Delivery	In Stock
Uniprot ID	P09871
Expression Host	HEK293
Tag	C-6×His tag
Molecular Characterization	C1S(Glu16-Asp688) 6×His tag
Molecular Weight	The protein has a predicted molecular mass of 75.7 kDa after removal of the signal peptide. The apparent molecular mass of C1S-His is approximately 70-100 kDa due to glycosylation.
Purity	The purity of the protein is greater than 85% as determined by SDS-PAGE and Coomassie blue staining.
Formulation & Reconstitution	Lyophilized from sterile PBS, pH 7.4. Normally 5 % - 8% trehalose is added as protectants before lyophilization. Please see Certificate of Analysis for specific instructions.
Storage & Shipping	Store at -20°C to -80°C for 12 months in lyophilized form. After reconstitution, if not intended for use within a month, aliquot and store at -80°C (Avoid repeated freezing and thawing).Lyophilized proteins are shipped at ambient temperature.
Background	This gene encodes a serine protease, which is a major constituent of the human complement subcomponent C1. C1s associates with two other complement components C1r and C1q in order to yield the first component of the serum complement system. Defects in this gene are the cause of selective C1s deficiency. [provided by RefSeq, Mar 2009]
Usage	Research use only
Conjugate	Unconjugated



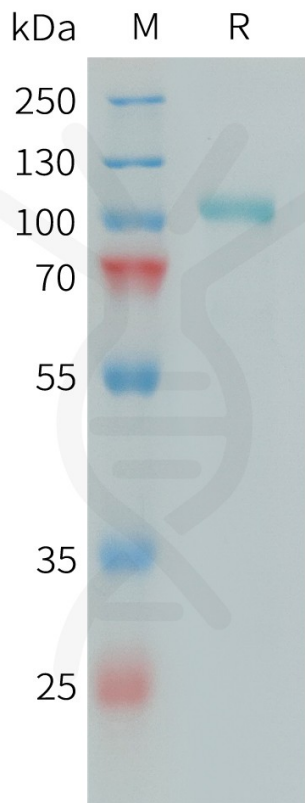


Figure 1. Human C1S Protein, His Tag on SDS-PAGE under reducing condition.

Human C1S, His Tagged protein ELISA
0.2 µg of Human C1S, His tagged protein per well

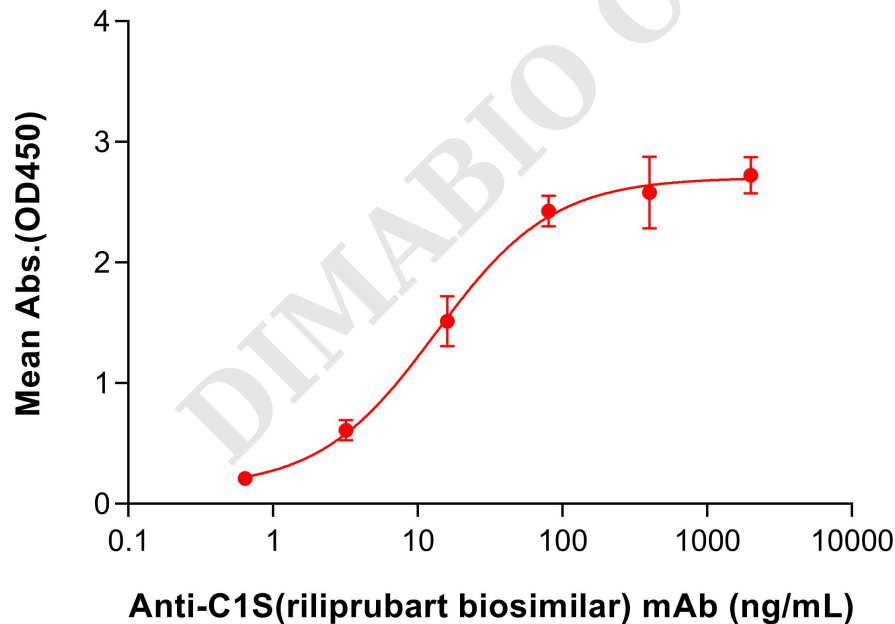


Figure 2. ELISA plate pre-coated by 2 µg/mL (100 µL/well) Human C1S Protein, His Tag (PME101394) can bind Anti-C1S(riliprubart biosimilar) mAb (BME100649) in a linear range of 3.2-16 ng/mL.

