

PRODUCT INFORMATION

Target	BCHE
Synonyms	BCHED;CHE1;CHE2;E1
Description	Recombinant Human BCHE Protein with C-terminal 6×His tag
Delivery	In Stock
Uniprot ID	P06276
Expression Host	HEK293
Tag	C-6×His Tag
Molecular Characterization	BCHE(Glu29-Leu602) 6×His tag
Molecular Weight	The protein has a predicted molecular mass of 65.9 kDa after removal of the signal peptide. The apparent molecular mass of BCHE-His is approximately 70-130 kDa due to glycosylation.
Purity	The purity of the protein is greater than 85% as determined by SDS-PAGE and Coomassie blue staining.
Formulation & Reconstitution	Lyophilized from sterile PBS, pH 7.4. Normally 5 % - 8% trehalose is added as protectants before lyophilization. Please see Certificate of Analysis for specific instructions of reconstitution.
Storage&Shipping	Store at -20°C to -80°C for 12 months in lyophilized form. After reconstitution, if not intended for use within a month, aliquot and store at -80°C (Avoid repeated freezing and thawing). Lyophilized proteins are shipped at ambient temperature.
Background	This gene encodes a cholinesterase enzyme and member of the type-B carboxylesterase/lipase family of proteins. The encoded enzyme exhibits broad substrate specificity and is involved in the detoxification of poisons including organophosphate nerve agents and pesticides, and the metabolism of drugs including cocaine, heroin and aspirin. Humans homozygous for certain mutations in this gene exhibit prolonged apnea after administration of the muscle relaxant succinylcholine. [provided by RefSeq, Jul 2016]
Usage	Research use only
Conjugate	Unconjugated



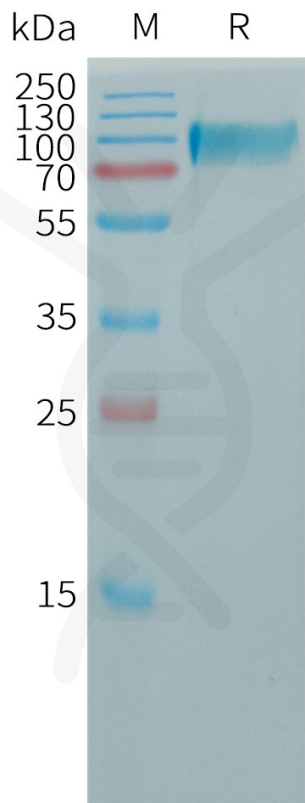


Figure 1. Human BCHE Protein, His Tag on SDS-PAGE under reducing condition.

