

PRODUCT INFORMATION

Target	BCAM
Synonyms	AU;CD239;LU;MSK19
Description	Recombinant human BCAM protein with C-terminal 6×His tag
Delivery	In Stock
Uniprot ID	P50895
Expression Host	HEK293
Tag	C-6×His Tag
Molecular Characterization	BCAM(Glu32-Ala547) 6×His tag
Molecular Weight	The protein has a predicted molecular mass of 57.0 kDa after removal of the signal peptide. The apparent molecular mass of BCAM-His is approximately 55-100 kDa due to glycosylation.
Purity	The purity of the protein is greater than 85% as determined by SDS-PAGE and Coomassie blue staining.
Formulation & Reconstitution	Lyophilized from sterile PBS, pH 7.4. Normally 5 % - 8% trehalose is added as protectants before lyophilization. Please see Certificate of Analysis for specific instructions of reconstitution.
Storage&Shipping	Store at -20°C to -80°C for 12 months in lyophilized form. After reconstitution, if not intended for use within a month, aliquot and store at -80°C (Avoid repeated freezing and thawing). Lyophilized proteins are shipped at ambient temperature.
Background	This gene encodes Lutheran blood group glycoprotein, a member of the immunoglobulin superfamily and a receptor for the extracellular matrix protein, laminin. The protein contains five extracellular immunoglobulin domains, a single transmembrane domain, and a short C-terminal cytoplasmic tail. This protein may play a role in epithelial cell cancer and in vaso-occlusion of red blood cells in sickle cell disease. Polymorphisms in this gene define some of the antigens in the Lutheran system and also the Auberger system. Inactivating variants of this gene result in the recessive Lutheran null phenotype, Lu(a-b-), of the Lutheran blood group. Two transcript variants encoding different isoforms have been found for this gene. [provided by RefSeq, May 2012]
Usage	Research use only
Conjugate	Unconjugated



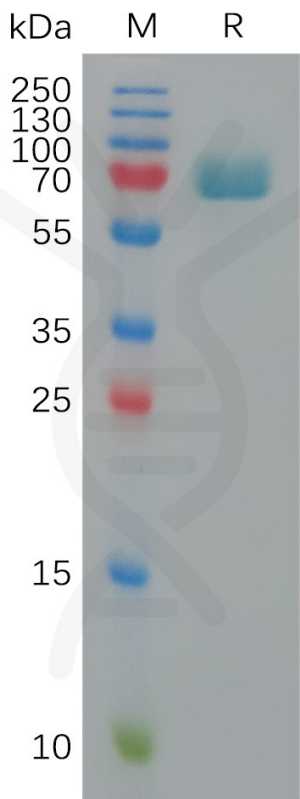


Figure 1. Human BCAM Protein, His Tag on SDS-PAGE under reducing condition.

