

PRODUCT INFORMATION

Target	B7-1
Synonyms	CD80;B7;B7-1;B7.1;BB1;CD28LG;CD28LG1;LAB7
Description	Recombinant human B7-1 protein with C-terminal human Fc tag
Delivery	In Stock
Uniprot ID	P33681
Expression Host	HEK293
Tag	C-Human Fc Tag
Molecular Characterization	B7-1(Val35-Asn242) hFc(Glu99-Ala330)
Molecular Weight	The protein has a predicted molecular mass of 50.0 kDa after removal of the signal peptide.
Purity	The purity of the protein is greater than 95% as determined by SDS-PAGE and Coomassie blue staining.
Formulation & Reconstitution	Lyophilized from sterile PBS, pH 7.4. Normally 5 % - 8% trehalose is added as protectants before lyophilization. Please see Certificate of Analysis for specific instructions of reconstitution.
Storage & Shipping	Store at -20°C to -80°C for 12 months in lyophilized form. After reconstitution, if not intended for use within a month, aliquot and store at -80°C (Avoid repeated freezing and thawing). Lyophilized proteins are shipped at ambient temperature.
Background	The protein encoded by this gene is a membrane receptor that is activated by the binding of CD28 or CTLA-4. The activated protein induces T-cell proliferation and cytokine production. This protein can act as a receptor for adenovirus subgroup B and may play a role in lupus neuropathy.
Usage	Research use only
Conjugate	Unconjugated



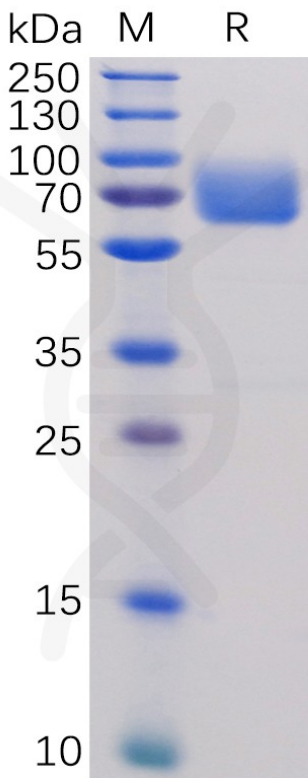


Figure 1. Human B7-1 Protein, hFc Tag on SDS-PAGE under reducing condition.

**Human B7-1, hFc Tagged protein ELISA**  
0.2 µg of Human B7-1, hFc Tagged protein per well

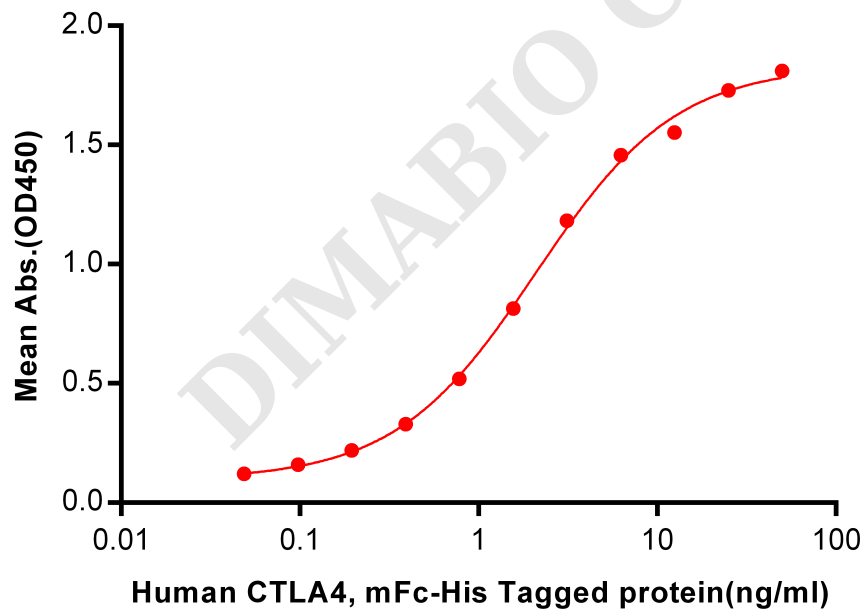


Figure 2. ELISA plate pre-coated by 2 µg/ml (100 µl/well) Human B7-1, hFc tagged protein (PME100473) can bind Human CTLA4, mFc-His tagged protein PME100017 in a linear range of 0.048-2.094 ng/ml.



**Human B7-1, hFc Tagged protein ELISA**

0.2 µg of B7-1, hFc Tagged protein per well

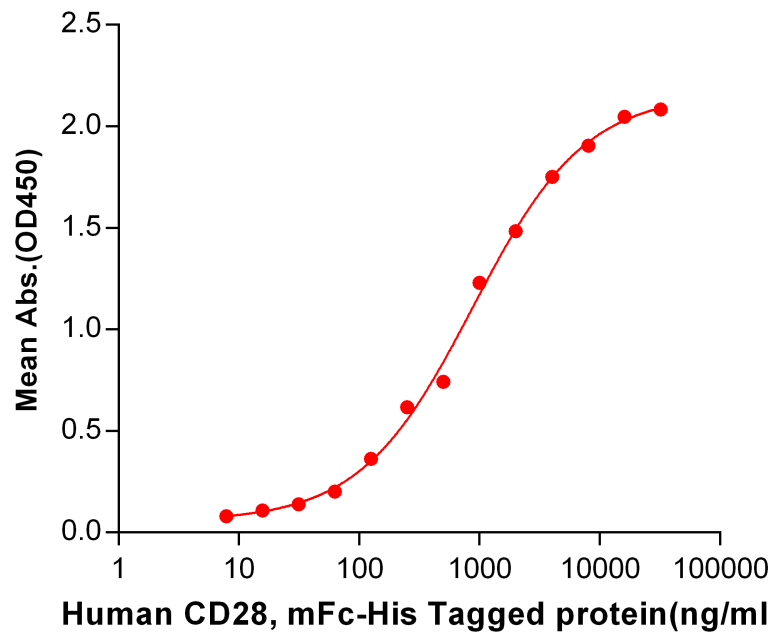


Figure 3. ELISA plate pre-coated by 2 µg/ml (100 µl/well) Human B7-1, hFc tagged protein (PME100473) can bind Human CD28, mFc-His tagged protein PME100014 in a linear range of 125-4000 ng/ml.

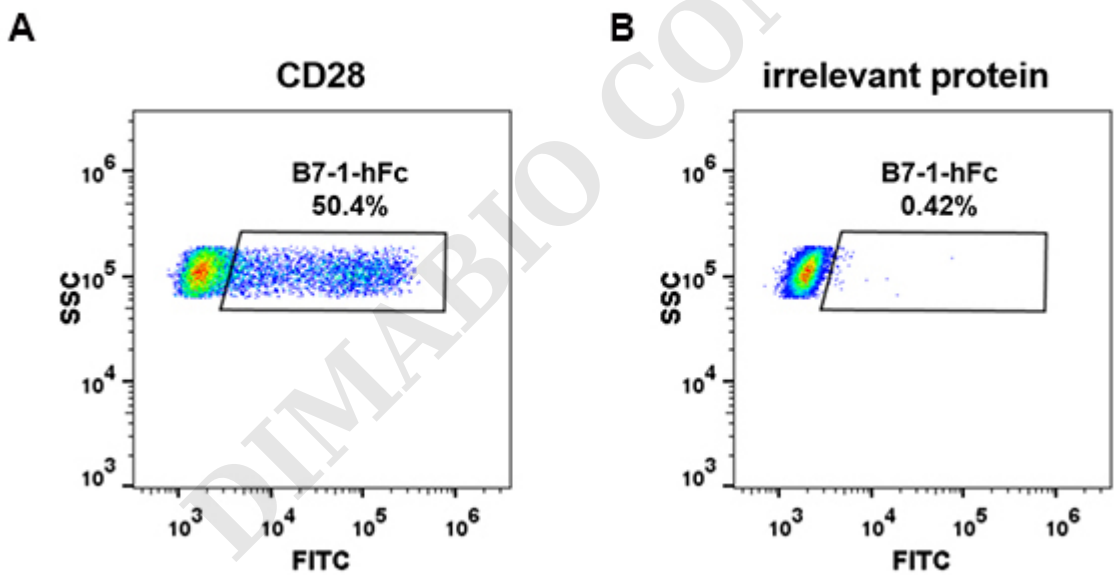


Figure 4. HEK293 cell line transfected with irrelevant protein (B) and human CD28 (A) were surface stained with Human B7-1, hFc tagged protein (PME100473) 1 µg/ml followed by Alexa 488-conjugated anti-human IgG secondary antibody.



**Human B7-1, hFc tagged protein ELISA**  
0.1 µg of Human B7-1, hFc tagged protein per well

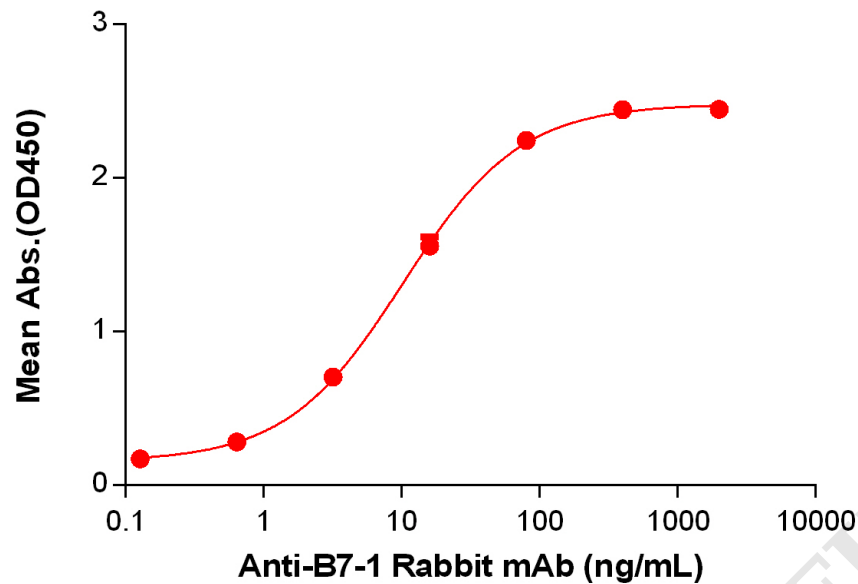


Figure 5. ELISA plate pre-coated by 1 µg/mL (100 µL/well) Human B7-1 Protein, hFc Tag (PME100473) can bind Anti-B7-1 Rabbit mAb in a linear range of 3.2-80 ng/mL.

