

PRODUCT INFORMATION

Target	AZU1
Synonyms	AZAMP;AZU;CAP37;HBP;hHBP;HUMAZUR;NAZC
Description	Recombinant Human AZU1 Protein with C-terminal 6×His tag
Delivery	In Stock
Uniprot ID	P20160
Expression Host	HEK293
Tag	C-6×His Tag
Molecular Characterization	AZU1(Ile27-Pro248) 6×His tag
Molecular Weight	The protein has a predicted molecular mass of 24.9 kDa after removal of the signal peptide. The apparent molecular mass of AZU1-His is approximately 35-55 kDa due to glycosylation.
Purity	The purity of the protein is greater than 85% as determined by SDS-PAGE and Coomassie blue staining.
Formulation & Reconstitution	Lyophilized from sterile PBS, pH 7.4. Normally 5 % - 8% trehalose is added as protectants before lyophilization. Please see Certificate of Analysis for specific instructions of reconstitution.
Storage & Shipping	Store at -20°C to -80°C for 12 months in lyophilized form. After reconstitution, if not intended for use within a month, aliquot and store at -80°C (Avoid repeated freezing and thawing). Lyophilized proteins are shipped at ambient temperature.
Background	Azurophil granules, specialized lysosomes of the neutrophil, contain at least 10 proteins implicated in the killing of microorganisms. This gene encodes a preproprotein that is proteolytically processed to generate a mature azurophil granule antibiotic protein, with monocyte chemotactic and antimicrobial activity. It is also an important multifunctional inflammatory mediator. This encoded protein is a member of the serine protease gene family but it is not a serine proteinase, because the active site serine and histidine residues are replaced. The genes encoding this protein, neutrophil elastase 2, and proteinase 3 are in a cluster located at chromosome 19pter. All 3 genes are expressed coordinately and their protein products are packaged together into azurophil granules during neutrophil differentiation. [provided by RefSeq, Nov 2015]
Usage	Research use only
Conjugate	Unconjugated



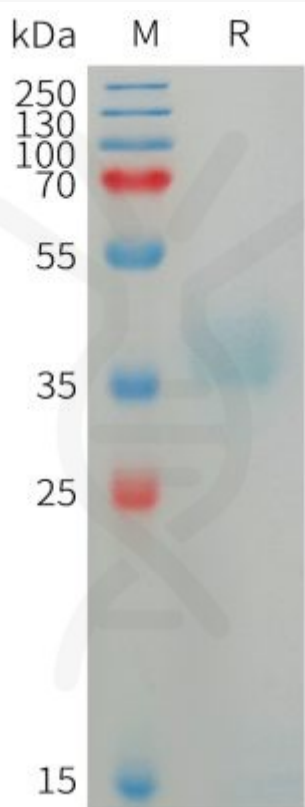


Figure 1. Human AZU1 Protein, His Tag on SDS-PAGE under reducing condition.

