

PRODUCT INFORMATION

Target	APOH
Synonyms	BG;B2G1;B2GP1
Description	Recombinant human APOH Protein with C-terminal 6×His tag
Delivery	In Stock
Uniprot ID	P02749
Expression Host	HEK293
Tag	C-6×His Tag
Molecular Characterization	APOH(Gly20-Cys345) 6×His tag
Molecular Weight	The protein has a predicted molecular mass of 37.1 kDa after removal of the signal peptide. The apparent molecular mass of APOH-His is approximately 35-70 kDa due to glycosylation.
Purity	The purity of the protein is greater than 85% as determined by SDS-PAGE and Coomassie blue staining.
Formulation & Reconstitution	Lyophilized from sterile PBS, pH 7.4. Normally 5 % - 8% trehalose is added as protectants before lyophilization. Please see Certificate of Analysis for specific instructions of reconstitution.
Storage & Shipping	Store at -20°C to -80°C for 12 months in lyophilized form. After reconstitution, if not intended for use within a month, aliquot and store at -80°C (Avoid repeated freezing and thawing). Lyophilized proteins are shipped at ambient temperature.
Background	Apolipoprotein H, also known as beta-2-glycoprotein I, is a component of circulating plasma lipoproteins. It has been implicated in a variety of physiologic pathways including lipoprotein metabolism, coagulation, hemostasis, and the production of antiphospholipid autoantibodies. APOH may be a required cofactor for anionic phospholipid binding by the antiphospholipid autoantibodies found in sera of many patients with lupus and primary antiphospholipid syndrome (APS). The anti-beta (2) glycoprotein I antibodies from APS patients, mediate inhibition of activated protein C which has anticoagulant properties. Because beta-2-GPI is the main autoantigen in patients with APS, the disruption of this pathway by autoantibodies may be an important mechanism for thrombosis in patients with APS.[provided by RefSeq, Dec 2019]
Usage	Research use only
Conjugate	Unconjugated



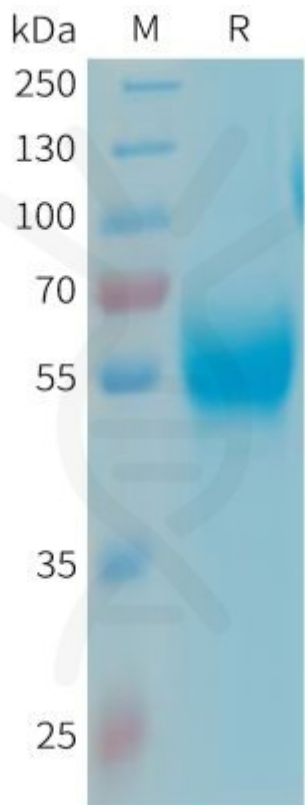


Figure 1. Human APOH Protein, His Tag on SDS-PAGE under reducing condition.

