

PRODUCT INFORMATION

|                              |   |
|------------------------------|---|
| Target                       | ADAMTS13  |
| Synonyms                     | VWFCP; C9orf8; vWF-CP; ADAM-TS13; ADAMTS-13   |
| Description                  | Recombinant human ADAMTS13 Protein with C-terminal 3×Flag Tag   |
| Delivery                     | In Stock  |
| Uniprot ID                   | Q76LX8  |
| Expression Host              | HEK293  |
| Tag                          | C-3×Flag Tag  |
| Molecular Characterization   | ADAMTS13(Met1-Thr1427) 3×Flag tag   |
| Molecular Weight             | The protein has a predicted molecular mass of 156.6 kDa after removal of the signal peptide.  |
| Purity                       | The purity of the protein is greater than 85% as determined by SDS-PAGE and Coomassie blue staining.  |
| Formulation & Reconstitution | Lyophilized from sterile PBS, pH 7.4. Normally 5 % - 8% trehalose is added as protectants before lyophilization. Please see Certificate of Analysis for specific instructions of reconstitution.  |
| Storage&Shipping             | Store at -20°C to -80°C for 12 months in lyophilized form. After reconstitution, if not intended for use within a month, aliquot and store at -80°C (Avoid repeated freezing and thawing). Lyophilized proteins are shipped at ambient temperature.   |
| Background                   | This gene encodes a member of a family of proteins containing several distinct regions, including a metalloproteinase domain, a disintegrin-like domain, and a thrombospondin type 1 (TS) motif. The enzyme encoded by this gene specifically cleaves von Willebrand Factor (vWF). Defects in this gene are associated with thrombotic thrombocytopenic purpura. Alternative splicing results in multiple transcript variants. [provided by RefSeq, Jul 2013] |
| Usage                        | Research use only   |
| Conjugate                    | Unconjugated  |



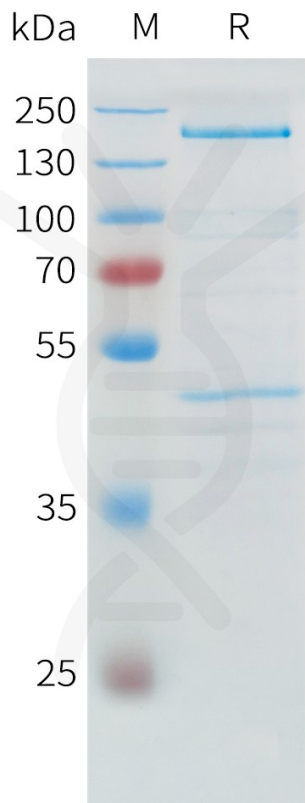


Figure 1. Human ADAMTS13 Protein, Flag Tag on SDS-PAGE under reducing condition.

