

PRODUCT INFORMATION

|                              |   |
|------------------------------|---|
| Target                       | ADAM9   |
| Synonyms                     | CORD9;MCMP;MDC9;Mltng   |
| Description                  | Recombinant human ADAM9 Protein with C-terminal 6×His tag   |
| Delivery                     | In Stock  |
| Uniprot ID                   | Q13443  |
| Expression Host              | HEK293  |
| Tag                          | C-6×His Tag   |
| Molecular Characterization   | ADAM9(Ala29-Asp697) 6×His Tag   |
| Molecular Weight             | The protein has a predicted molecular mass of 74.8 kDa after removal of the signal peptide.   |
| Purity                       | The purity of the protein is greater than 95% as determined by SDS-PAGE and Coomassie blue staining.  |
| Formulation & Reconstitution | Lyophilized from sterile PBS, pH 7.4. Normally 5 % - 8% trehalose is added as protectants before lyophilization. Please see Certificate of Analysis for specific instructions of reconstitution.  |
| Storage&Shipping             | Store at -20°C to -80°C for 12 months in lyophilized form. After reconstitution, if not intended for use within a month, aliquot and store at -80°C (Avoid repeated freezing and thawing). Lyophilized proteins are shipped at ambient temperature.   |
| Background                   | This gene encodes a member of the ADAM (a disintegrin and metalloprotease domain) family. Members of this family are membrane-anchored proteins structurally related to snake venom disintegrins, and have been implicated in a variety of biological processes involving cell-cell and cell-matrix interactions, including fertilization, muscle development, and neurogenesis. The protein encoded by this gene interacts with SH3 domain-containing proteins, binds mitotic arrest deficient 2 beta protein, and is also involved in TPA-induced ectodomain shedding of membrane-anchored heparin-binding EGF-like growth factor. Several alternatively spliced transcript variants have been identified for this gene. [provided by RefSeq, Jul 2010] |
| Usage                        | Research use only   |
| Conjugate                    | Unconjugated  |



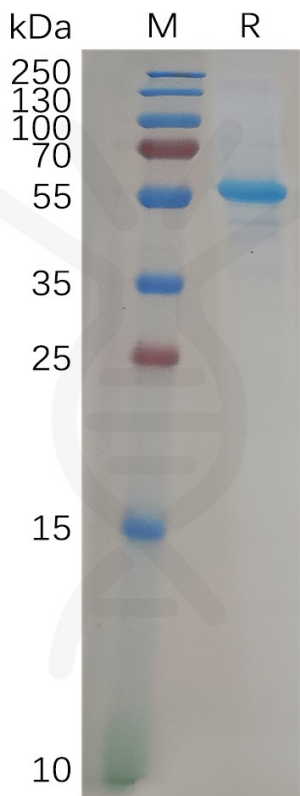


Figure 1. Human ADAM9 Protein, His Tag on SDS-PAGE under reducing (R) conditions.

**Human ADAM9, His tagged protein ELISA**  
0.1 µg of Human ADAM9, His tagged protein per well

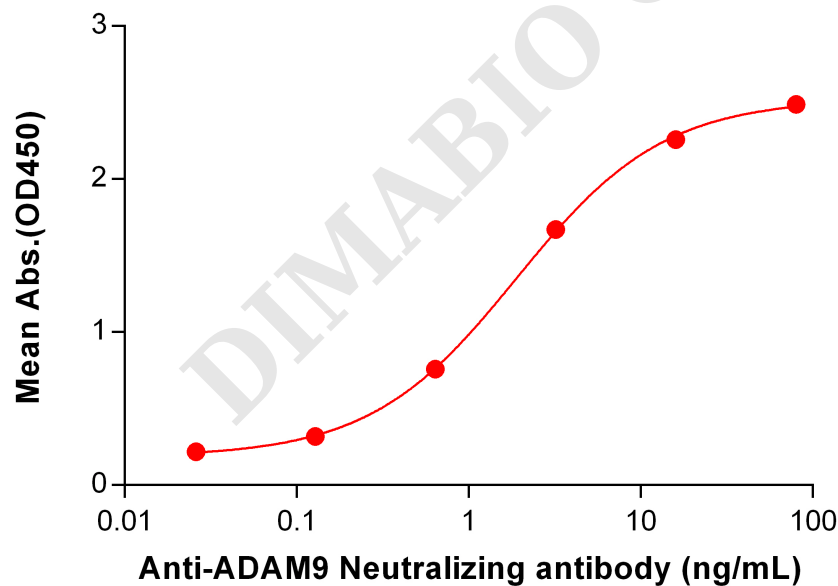


Figure 2. ELISA plate pre-coated by 1 µg/mL (100 µL/well) Human ADAM9 protein, His Tag (PME100901) can bind Anti-ADAM9 Neutralizing antibody BME100064 in a linear range of 0.128-16 ng/mL.



**Human ADAM9, His Tagged protein ELISA**  
0.2 µg of Human ADAM9, His tagged protein per well

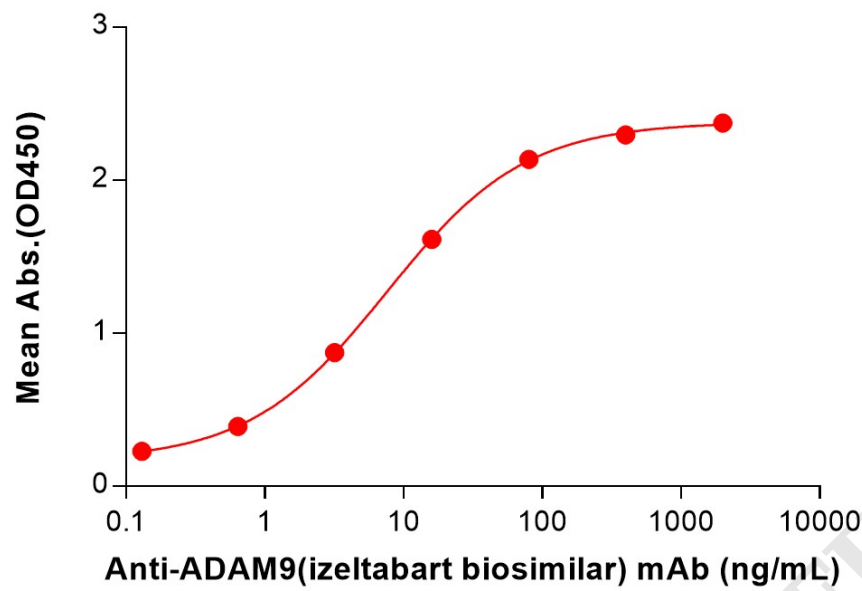


Figure 3. ELISA plate pre-coated by 2 µg/mL (100 µL/well) Human ADAM9 Protein, His Tag (PME100901) can bind Anti-ADAM9(izeltabart biosimilar) mAb (BME100230) in a linear range of 0.64-80 ng/mL.

