

PRODUCT INFORMATION

| | |
|-------------------------|--|
| Target | CD52 |
| Description | Monoclonal Cell Line Derived from CHO-S Cells, Engineered for Stable Expression of Human CD52 Using Lentiviral Technology |
| Host Cells | CHO-S |
| Uniprot ID | P31358 |
| Applications | FACS Data |
| Growth media | DMEM+10% FBS+1% P.S+Gln+2 ug/mL Puromycin |
| Package | 5E6 Cells/mL |
| Suggested Control | SKU: BME100030 |
| Warranty and Disclaimer | 1. Please inspect cells upon receipt and report any issues promptly. 2. We offer one-time replacements for issues reported within a week of receipt. 3. User-induced issues are not eligible for free replacements. 4. We do not accept liability for damages resulting from cell use, storage, or loss. 5. Feedback received more than one month after receipt will not be processed. |
| Storage&Shipping | Cells are shipped using dry ice and require liquid nitrogen storage for long term preservation. |
| Synonyms | CDW52;HE5;CAMPATH-1 antigen |
| Background | CD52 (CD52 Molecule) is a Protein Coding gene. Diseases associated with CD52 include Polymphocytic Leukemia and Lymphocytic Leukemia. Among its related pathways are Metabolism of proteins and Post-translational modification- synthesis of GPI-anchored proteins. |
| Usage | For research use only. |



Hu_CD52 CHO-S Cell Line

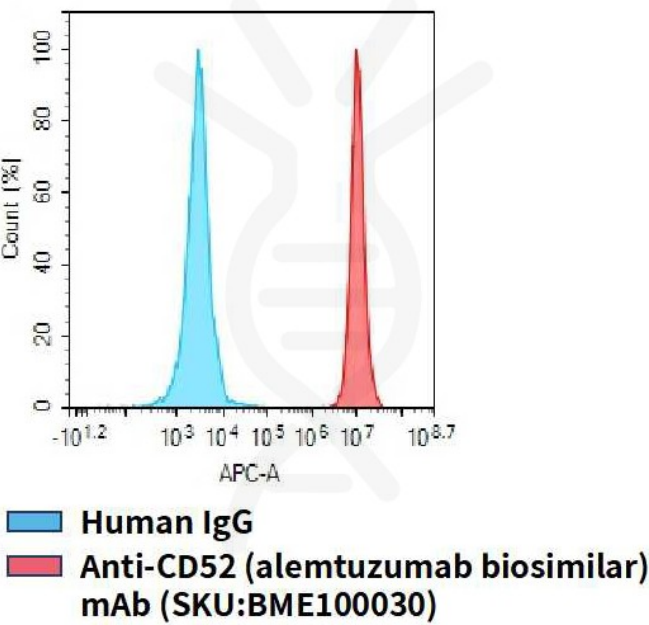


Figure 1. Flow cytometry analysis of human CD52 overexpression using Hu_CD52 CHO-S Cell Line (Cat. No. CEL100078) and Anti-CD52 (alemtuzumab biosimilar) mAb (Cat. No. BME100030)

