

PRODUCT INFORMATION

Tag	C-Flag&Avi Tag
Target	CLDN2
Synonyms	OAZON; claudin-2
Description	Biotinylated Human CLDN2 full length protein-synthetic nanodisc
Delivery	In Stock
Uniprot ID	Q8NHS1
Expression Host	HEK293
Protein Families	Transmembrane
Protein Pathways	Cell adhesion molecules (CAMs), Leukocyte transendothelial migration, Tight junction
Molecular Weight	The human full length CLDN2 Protein has a MW of 29.3 kDa.
Formulation & Reconstitution	Lyophilized from nanodisc solubilization buffer (20 mM Tris-HCl, 150 mM NaCl, pH 8.0). Normally 5% - 8% trehalose is added as protectants before lyophilization. Please see Certificate of Analysis for specific instructions of reconstitution.
Storage&Shipping	Store at -20°C to -80°C for 12 months in lyophilized form. After reconstitution, if not intended for use within a month, aliquot and store at -80°C (Avoid repeated freezing and thawing). Lyophilized proteins are shipped at ambient temperature.
Background	This gene product belongs to the claudin protein family whose members have been identified as major integral membrane proteins localized exclusively at tight junctions. Claudins are expressed in an organ-specific manner and regulate tissue-specific physiologic properties of tight junctions. This protein is expressed in the intestine. Alternatively spliced transcript variants with different 5' untranslated region have been found for this gene.[provided by RefSeq, Jan 2010]
Usage	Research use only
Conjugate	Biotinylated



Biotinylated Human CLDN2 full length protein-synthetic nanodisc ELISA

0.2 μ g of Biotinylated Human CLDN2-Nanodisc, Flag Tag per well

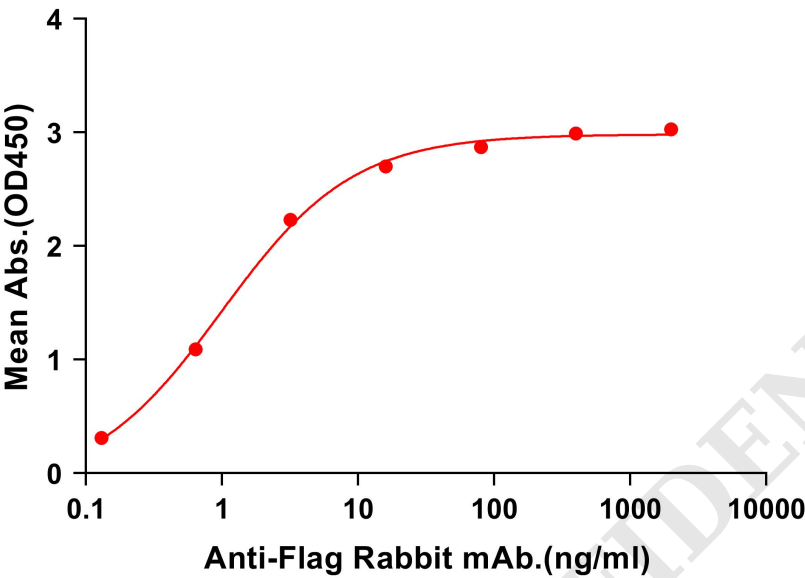


Figure 1. ELISA plate pre-coated by 2 μ g/mL (100 μ L/well) Biotinylated Human CLDN2 full length protein-synthetic nanodisc (FLP100082B) can bind Anti-Flag Rabbit mAb in a linear range of 0.13-16 ng/mL.

Biotinylated Human CLDN2 full length protein-synthetic nanodisc ELISA

0.1 μ g of Streptavidin per well

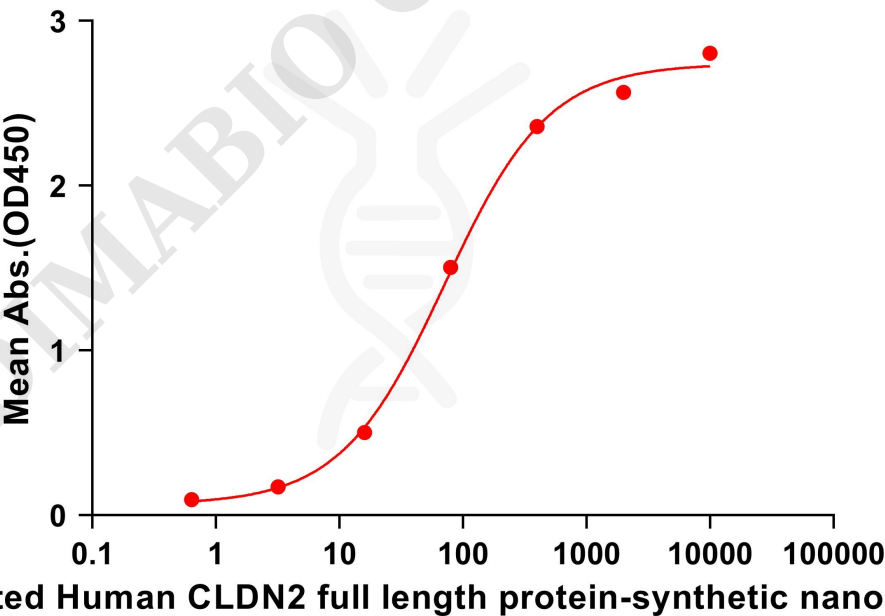
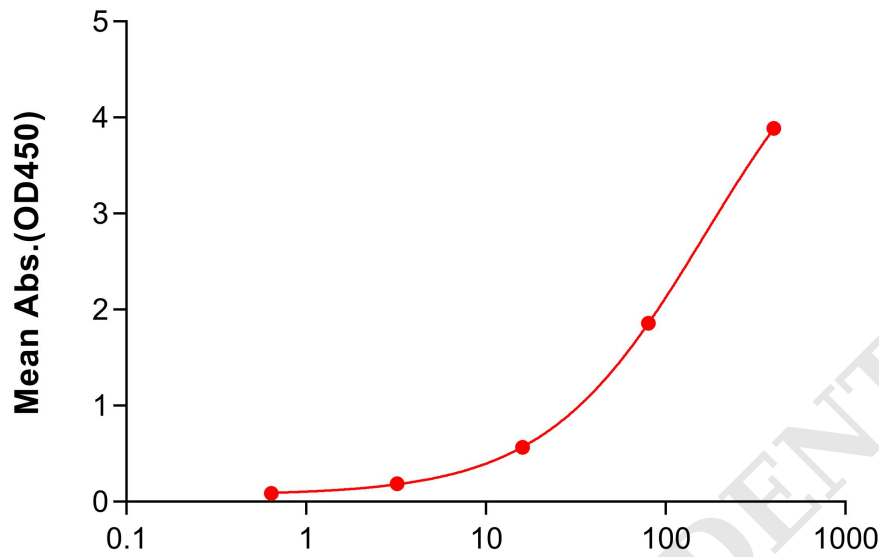


Figure 2. ELISA plate pre-coated by 1 μ g/mL (100 μ L/well) Streptavidin can bind Biotinylated Human CLDN2 full length protein-synthetic nanodisc (FLP100082B) in a linear range of 16-400 ng/mL. In order to specifically detect FLP100082B, Anti-Flag Rabbit antibody was used as detection antibody.



Biotinylated Human CLDN2 full length protein-synthetic nanodisc ELISA

0.2 μ g of Anti-Flag Rabbit mAb per well



Biotinylated Human CLDN2 full length protein-synthetic nanodisc.(ng/ml)

Figure 3. ELISA plate pre-coated by 2 μ g/mL (100 μ L/well) Anti-flag Rabbit mAb can bind Biotinylated Human CLDN2 full length protein-synthetic nanodisc (FLP100082B) in a linear range of 16-400 ng/mL. In order to specifically detect FLP100082B, HRP Conjugated Streptavidin was used as detection antibody.

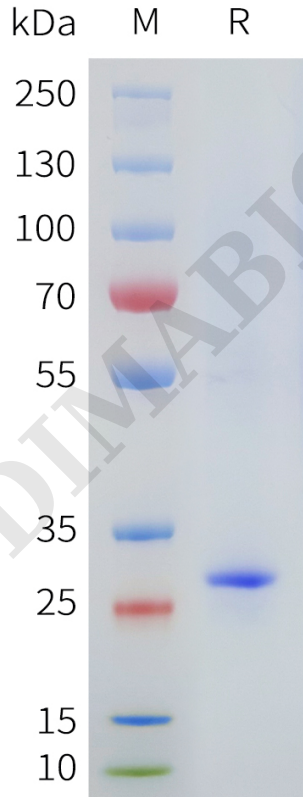


Figure 4. Biotinylated Human CLDN2-Nanodisc, Flag Tag on SDS-PAGE

