

PRODUCT INFORMATION

| | |
|------------------------------|-----------------------------------------------------------------------------------------------------------------------------------------------------------------------------------------------------------------------------------------------------|
| Uniprot ID | P18627 |
| Common Name | LAG-3,CD223 |
| Conjugate | Biotinylated |
| Synonyms | BMS-986016;ONO-4482 |
| Applications | ELISA |
| Recommended Dilutions | ELISA 1:5000-10000 |
| Formulation & Reconstitution | Lyophilized from sterile PBS, pH 7.4. Normally 5 % - 8% trehalose is added as protectants before lyophilization. Please see Certificate of Analysis for specific instructions of reconstitution. |
| Host Species | Homo sapiens |
| IgG type | Human IgG4 - Kappa |
| Reactivity | Human |
| Target | LAG3 |
| Description | Biotinylated Anti-LAG3 (relatlimab biosimilar)mAb |
| Delivery | In Stock |
| Storage&Shipping | Store at -20°C to -80°C for 12 months in lyophilized form. After reconstitution, if not intended for use within a month, aliquot and store at -80°C (Avoid repeated freezing and thawing). Lyophilized proteins are shipped at ambient temperature. |
| Background | Research grade biosimilar. Not for use in therapeutic or diagnostic procedures for humans or animals. |
| Usage | Research use only |



Biotinylated Anti-LAG3 (relatlimab biosimilar) mAb ELISA

0.2 µg of Human LAG3, His tagged protein per well

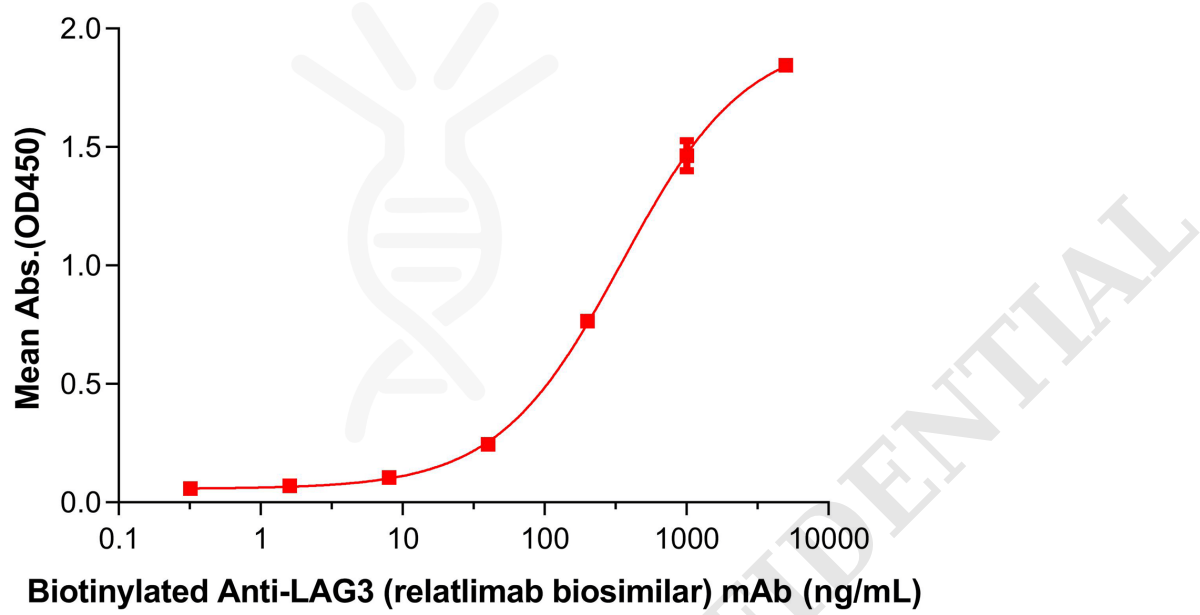


Figure 1. ELISA plate pre-coated by 2 µg/mL (100 µL/well) Human LAG3 Protein, His Tag (PME100512) can bind Biotinylated Anti-LAG3 (relatlimab biosimilar) mAb (BME100062B) in a linear range of 200-1000 ng/mL.

