

PRODUCT INFORMATION

Clone ID	2A4
Target	UCHL1
Synonyms	HEL-117; HEL-S-53; NDGOA; PARK5; PGP 9.5; PGP9.5; PGP95; SPG79; Uch-L1
Host Species	Rabbit
Description	Anti-UCHL1 antibody(2A4), Rabbit mAb
Delivery	In Stock
Uniprot ID	P09936
IgG type	Rabbit IgG
Clonality	Monoclonal
Reactivity	Human
Applications	ELISA; WB
Recommended Dilutions	ELISA 1:5000-10000; WB 1:1000
Purification	Purified from cell culture supernatant by affinity chromatography
Formulation & Reconstitution	Lyophilized from sterile PBS, pH 7.4. Normally 5 % - 8% trehalose is added as protectants before lyophilization. Please see Certificate of Analysis for specific instructions of reconstitution.
Storage&Shipping	Store at -20°C to -80°C for 12 months in lyophilized form. After reconstitution, if not intended for use within a month, aliquot and store at -80°C (Avoid repeated freezing and thawing). Lyophilized proteins are shipped at ambient temperature.
Background	The protein encoded by this gene belongs to the peptidase C12 family. This enzyme is a thiol protease that hydrolyzes a peptide bond at the C-terminal glycine of ubiquitin. This gene is specifically expressed in the neurons and in cells of the diffuse neuroendocrine system. Mutations in this gene may be associated with Parkinson disease.[provided by RefSeq, Sep 2009]
Usage	Research use only
Conjugate	Unconjugated
DIMA Disclaimer	All DIMA recombinant antibodies are genuinely generated by DIMA Biotech. They are all under patent application. Any protein sequencing or reverse engineering attempt is prohibited. We are actively scr



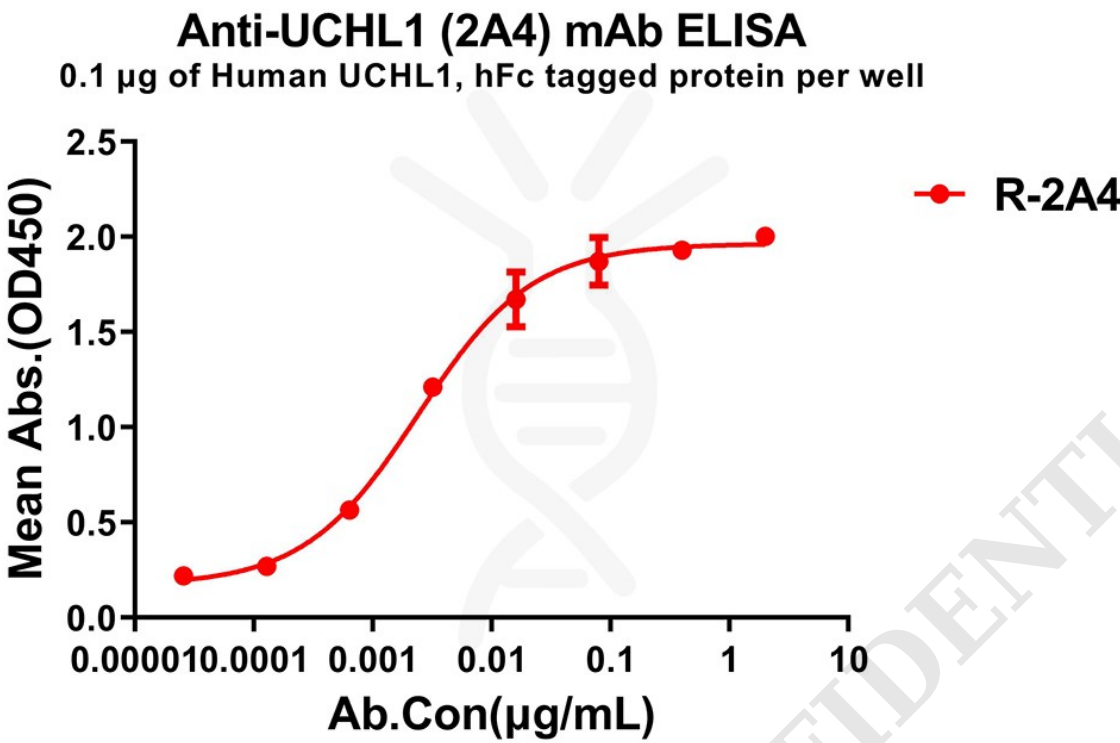


Figure 1. ELISA plate pre-coated by 1  $\mu$ g/ml (100  $\mu$ l/well) Human UCHL1 protein, hFc tagged protein (PME100629) can bind Rabbit anti-UCHL1 monoclonal antibody(clone: 2A4) in a linear range of 1-20 ng/ml.

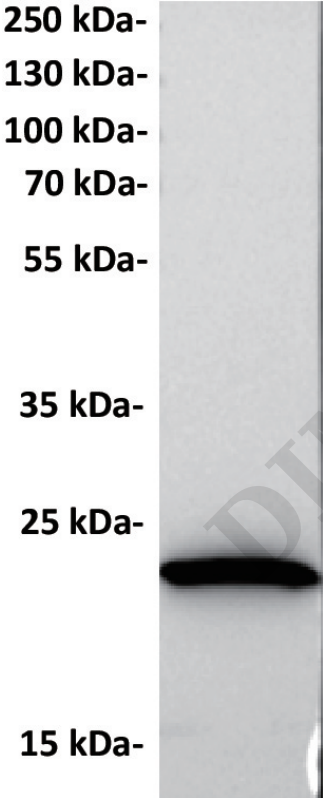


Figure 2. Anti-UCHL1 antibody (SKU# DME100843) at 1/1000 dilution  
Lane : RAJI(human Burkitt's lymphoma B lymphocyte), whole cell lysate  
Secondary : Goat Anti-Rabbit IgG H&L (HRP) at 1/5000 dilution  
band size: 24 kDa