

PRODUCT INFORMATION

Clone ID	1F7
Target	TNFRSF25
Synonyms	APO-3;DDR3;DR3;GEF720;LARD;PLEKHG5;TNFRSF12;TR3;TRAMP;WSL-1;WSL-LR
Host Species	Rabbit
Description	Anti-TNFRSF25 antibody(1F7), IgG1 Chimeric mAb
Delivery	In Stock
Uniprot ID	Q93038
IgG type	Rabbit/Human Fc chimeric IgG1
Clonality	Monoclonal
Reactivity	Human
Applications	ELISA, Flow Cyt
Recommended Dilutions	ELISA 1/5000-10000;Flow Cyt 1/100
Purification	Purified from cell culture supernatant by affinity chromatography
Formulation & Reconstitution	Powder
Storage&Shipping	Store at -20°C to -80°C for 12 months in lyophilized form. After reconstitution, if not intended for use within a month, aliquot and store at -80°C (Avoid repeated freezing and thawing).
Background	The protein encoded by this gene is a member of the TNF-receptor superfamily. This receptor is expressed preferentially in the tissues enriched in lymphocytes, and it may play a role in regulating lymphocyte homeostasis. This receptor has been shown to stimulate NF-kappa B activity and regulate cell apoptosis. The signal transduction of this receptor is mediated by various death domain containing adaptor proteins. Knockout studies in mice suggested the role of this gene in the removal of self-reactive T cells in the thymus. Multiple alternatively spliced transcript variants of this gene encoding distinct isoforms have been reported, most of which are potentially secreted molecules. The alternative splicing of this gene in B and T cells encounters a programmed change upon T-cell activation, which predominantly produces full-length, membrane bound isoforms, and is thought to be involved in controlling lymphocyte proliferation induced by T-cell activation. [provided by RefSeq, Jul 2008]
Usage	Research use only
Conjugate	Unconjugated



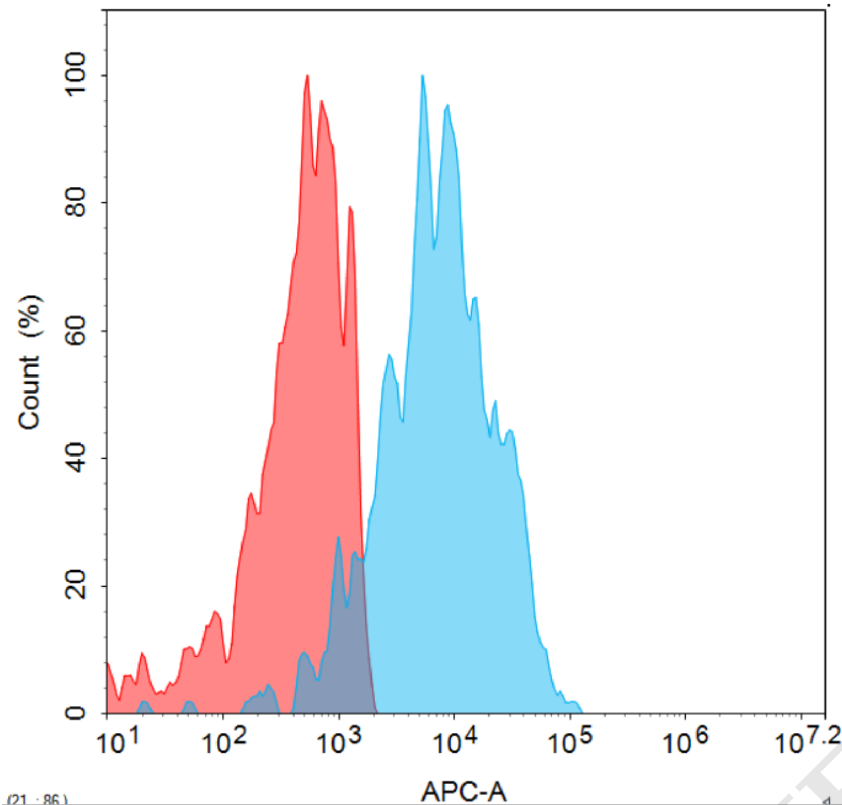


Figure 1. Flow cytometry analysis with 1µg/mL Anti-TNFRSF25 antibody(1F7) mAb on HEK293 cells transfected with human TNFRSF25 (Blue histogram) or HEK293 transfected with irrelevant protein (Red histogram).

Anti-TNFRSF25 antibody(1F7), IgG1 Chimeric mAb ELISA
0.1µg of Human TNFRSF25, hFc tagged protein per well

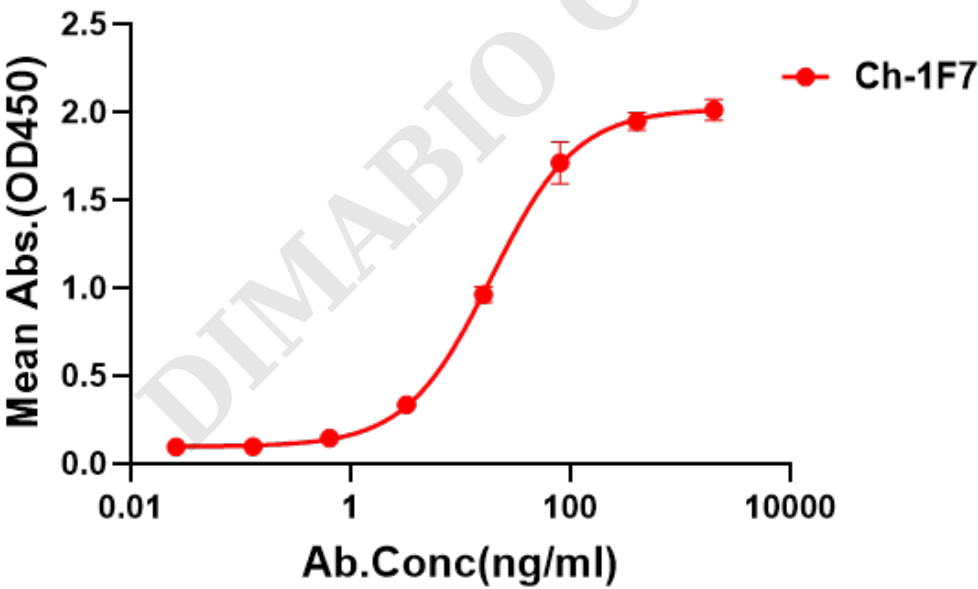


Figure 2. ELISA plate pre-coated by 1 µg/ml (100 µl/well) Human TNFRSF25 Protein, hFc Tag can bind IgG1 Chimeric anti-TNFRSF25 monoclonal antibody(clone: 1F7) in a linear range of 3.2-80 ng/ml.

