

PRODUCT INFORMATION

Clone ID	3E11
Target	SIGLEC10
Synonyms	SIGLEC10;Siglec-10;SLG2;PRO940;MGC126774
Host Species	Rabbit
Description	Anti-SIGLEC10 antibody(3E11), IgG1 Chimeric mAb
Delivery	In Stock
Uniprot ID	Q96LC7
IgG type	Rabbit/Human Fc chimeric IgG1
Clonality	Monoclonal
Reactivity	Human
Applications	ELISA, Flow Cyt
Recommended Dilutions	ELISA 1/5000-10000;Flow Cyt 1/100
Purification	Purified from cell culture supernatant by affinity chromatography
Formulation & Reconstitution	Powder
Storage&Shipping	Store at -20°C to -80°C for 12 months in lyophilized form. After reconstitution, if not intended for use within a month, aliquot and store at -80°C (Avoid repeated freezing and thawing). SIGLECs are members of the immunoglobulin superfamily that are expressed on the cell surface. Most SIGLECs have 1 or more cytoplasmic immune receptor tyrosine-based inhibitory motifs, or ITIMs. SIGLECs are typically expressed on cells of the innate immune system, with the exception of the B-cell expressed SIGLEC6 (MIM 604405).
Background	
Usage	Research use only
Conjugate	Unconjugated



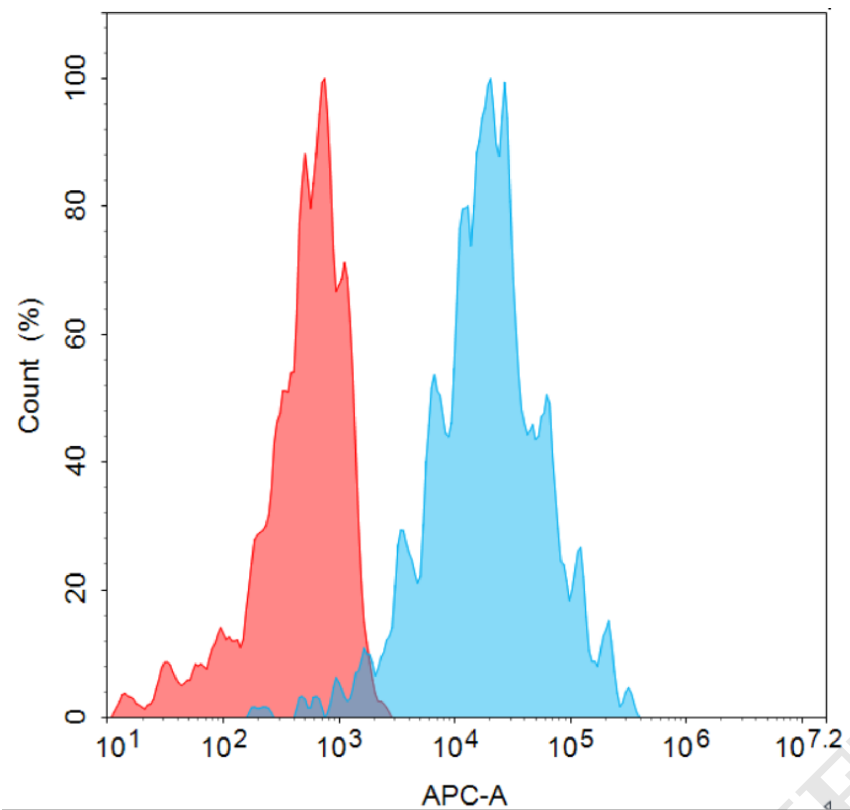


Figure 1. Flow cytometry analysis with 10µg/mL Anti-SIGLEC10 antibody(3E11) mAb on HEK293 cells transfected with human SIGLEC10 (Blue histogram) or HEK293 transfected with irrelevant protein (Red histogram).

**Anti-SIGLEC10 antibody(3E11), IgG1 Chimeric mAb ELISA**  
0.1µg of Human SIGLEC10, His tagged protein per well

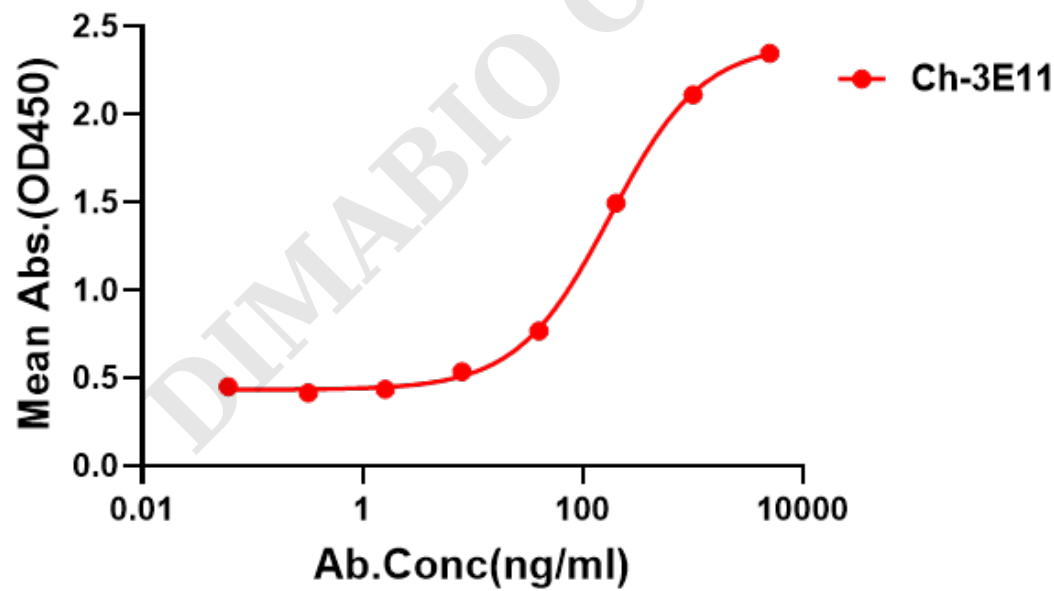


Figure 2. ELISA plate pre-coated by 1 µg/ml (100 µl/well) Human SIGLEC10 Protein, His Tag can bind IgG1 Chimeric anti-SIGLEC10 monoclonal antibody(clone: 3E11) in a linear range of 40-1000 ng/ml.

