

PRODUCT INFORMATION

Uniprot ID	Q14242
Common Name	cepeprubart
Conjugate	Unconjugated
Synonyms	selectin P ligand, selectin P glycoprotein ligand, PSGL-1, CD162, SELPLG
Applications	ELISA, Flow Cyt
Recommended Dilutions	ELISA 1:5000-10000, Flow Cyt 1:100
Formulation & Reconstitution	Lyophilized from sterile PBS, pH 7.4. Normally 5 % - 8% trehalose is added as protectants before lyophilization. Please see Certificate of Analysis for specific instructions of reconstitution.
Host Species	Chimeric Humanized
IgG type	Human IgG2(P193T,V282M,K322A,S378A) - kappa
Reactivity	Human
Target	CD162
Description	Anti-CD162(cepeprubart biosimilar) mAb
Delivery	In Stock
Storage & Shipping	Store at -20°C to -80°C for 12 months in lyophilized form. After reconstitution, if not intended for use within a month, aliquot and store at -80°C (Avoid repeated freezing and thawing). Lyophilized antibodies are shipped at ambient temperature.
Background	Research grade biosimilar. Not for use in therapeutic or diagnostic procedures for humans or animals.
Usage	Research use only



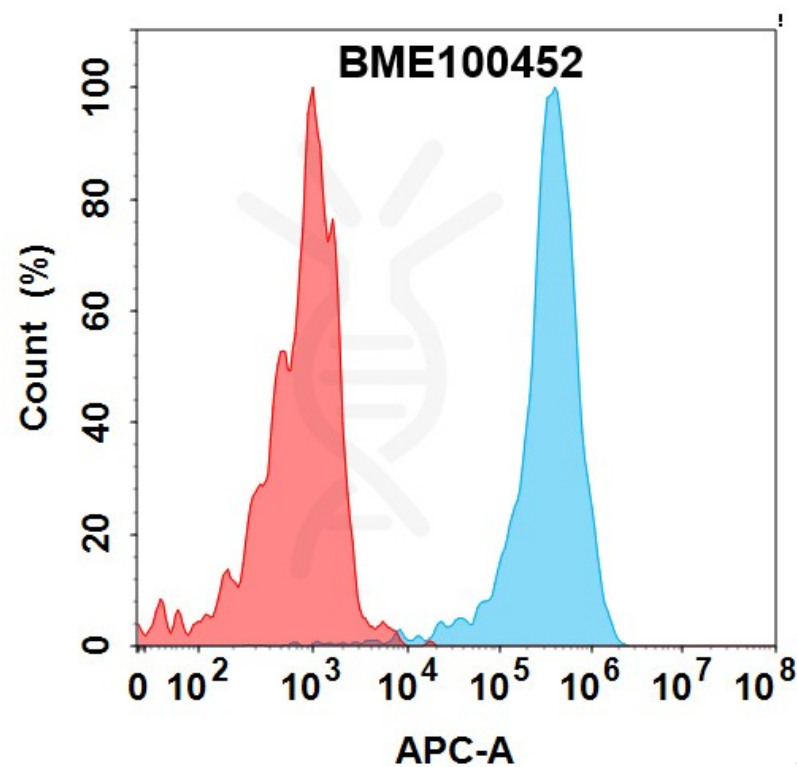


Figure 1. Flow cytometry analysis with 0.5 $\mu\text{g/mL}$ Anti-CD162(cepeprubart biosimilar) mAb (BME100452) on HEK293 cells transfected with Human CD162 protein (Blue histogram) or HEK293 transfected with irrelevant protein (Red histogram).

Anti-CD162(cepeprubart biosimilar) mAb ELISA
0.2 μg of Human CD162, His tagged protein per well

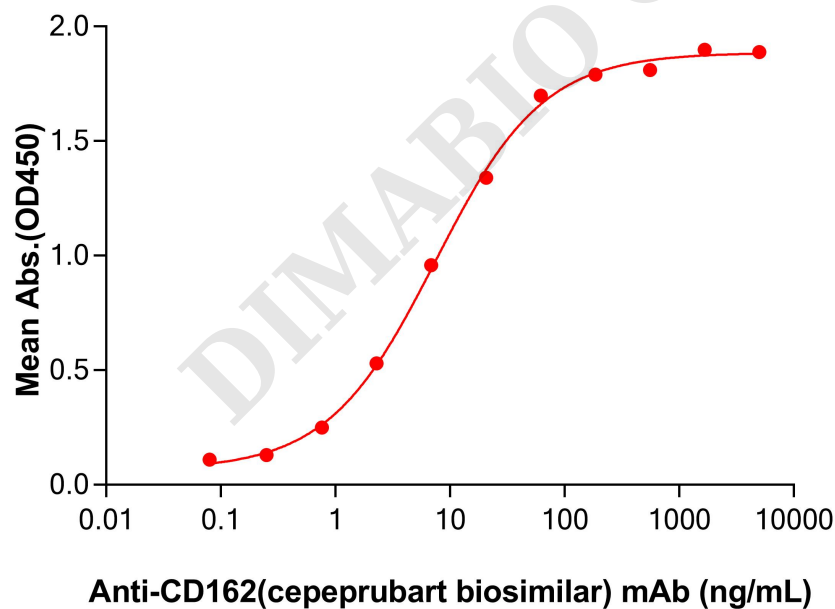


Figure 2. ELISA plate pre-coated by 2 $\mu\text{g/mL}$ (100 μL /well) Human CD162 Protein, His Tag (PME100471) can bind Anti-CD162(cepeprubart biosimilar) mAb (BME100452) in a linear range of 0.76–61.73 ng/mL .

