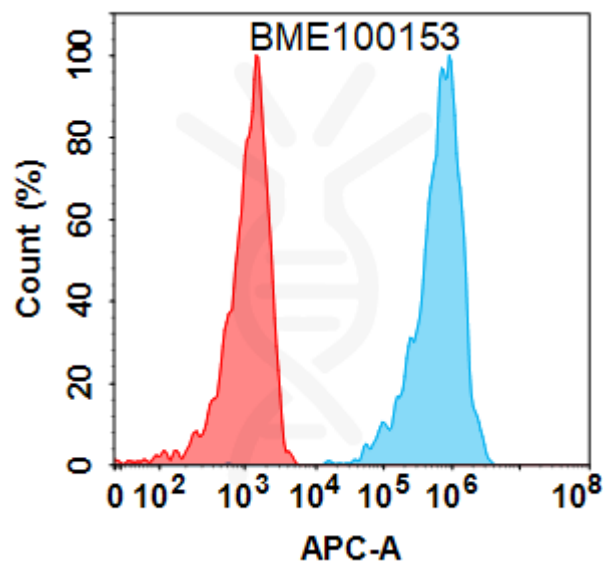


PRODUCT INFORMATION

Common Name	MEDI4736
Conjugate	Unconjugated
Synonyms	PD-L1;CD274;B7-H1;PDCD1L1;PDCD1LG1
Applications	Flow Cyt
Recommended Dilutions	Flow Cyt 1:100
Formulation & Reconstitution	Lyophilized from sterile PBS, pH 7.4. Normally 5 % - 8% trehalose is added as protectants before lyophilization. Please see Certificate of Analysis for specific instructions of reconstitution.
Host Species	Humanized
IgG type	Human IgG1(K214R,L234F,L235E,P331S) - Kappa
Reactivity	Human
Target	PDL1
Uniprot ID	Q9NZQ7
Description	Anti-PDL1 (durvalumab biosimilar) mAb
Delivery	In Stock
Storage & Shipping	Store at -20°C to -80°C for 12 months in lyophilized form. After reconstitution, if not intended for use within a month, aliquot and store at -80°C (Avoid repeated freezing and thawing). Lyophilized proteins are shipped at ambient temperature.
Background	Research grade biosimilar. Not for use in therapeutic or diagnostic procedures for humans or animals.
Usage	Research use only

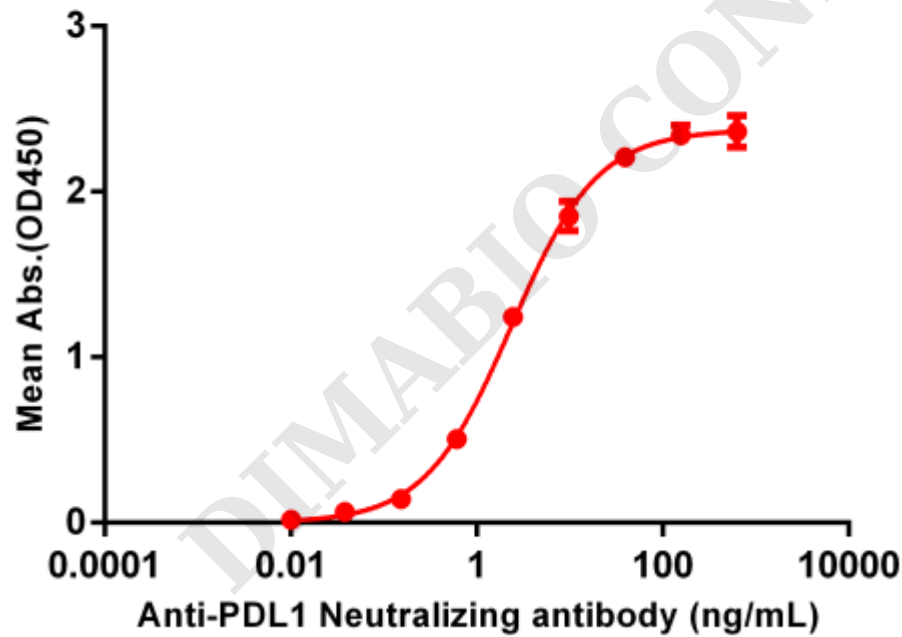




**Figure 1.** Flow cytometry analysis with 1 µg/mL Anti-PDL1(durvalumab biosimilar) mAb (BME100153) on HEK293 cells transfected with Human PDL1 protein (Blue histogram) or HEK293 transfected with irrelevant protein (Red histogram).

**Anti-PDL1 (durvalumab biosimilar) mAb ELISA**

0.2 µg of Human PDL1, mFc-His tagged protein per well



**Figure 2.** ELISA plate pre-coated by 2 µg/ml (100 µl/well) Human PDL1, mFc-His tagged protein ([getskuurl sku="PME100023"]) can bind Anti-PDL1 (durvalumab biosimilar) Neutralizing antibody (BME100153) in a linear range of 0.61-9.77 ng/ml.

