

PRODUCT INFORMATION

Common Name	MPDL3280A, RG7446
Synonyms	PD-L1; CD274; B7-H1; PDCD1L1; PDCD1LG1
Applications	ELISA; Flow Cyt
Recommended Dilutions	ELISA 1:5000-10000; Flow Cyt 1:100
Formulation & Reconstitution	Lyophilized from sterile PBS, pH 7.4. Normally 5% - 8% trehalose is added as protectants before lyophilization. Please see Certificate of Analysis for specific instructions of reconstitution.
Host Species	Humanized
IgG type	IgG1
Reactivity	Human
Target	PDL1
Uniprot ID	Q9NZQ7
Description	Anti-PDL1 (atezolizumab biosimilar) mAb
Delivery	In Stock
Storage & Shipping	Store at -20°C to -80°C for 12 months in lyophilized form. After reconstitution, if not intended for use within a month, aliquot and store at -80°C (Avoid repeated freezing and thawing). Lyophilized proteins are shipped at ambient temperature.
Background	Research grade biosimilar. Not for use in therapeutic or diagnostic procedures for humans or animals.
Usage	Research use only
Conjugate	Unconjugated



Anti-PDL1 (atezolizumab biosimilar) mAb ELISA

0.2 μ g of Human PDL1, mFc-His Tagged protein per well

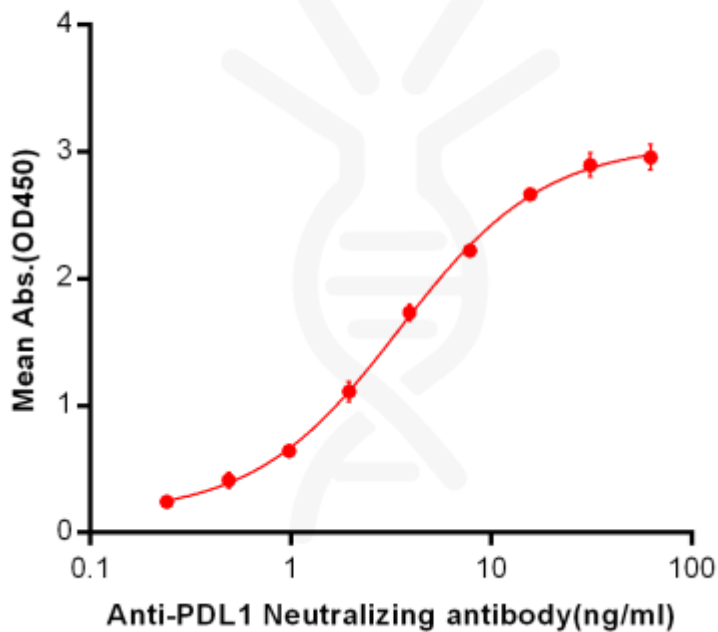
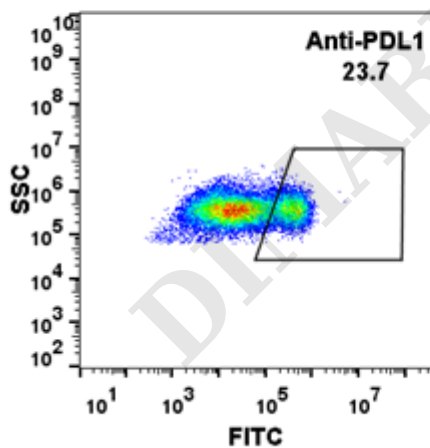


Figure 1. ELISA plate pre-coated by 2 μ g/ml (100 μ l/well) Human PDL1, mFc-His tagged protein ([getskuurl sku="PME100023"]) can bind Anti-PDL1 Neutralizing antibody in a linear range of 0.24-7.81 ng/ml.

A

PDL1



B

Irrelevant Protein

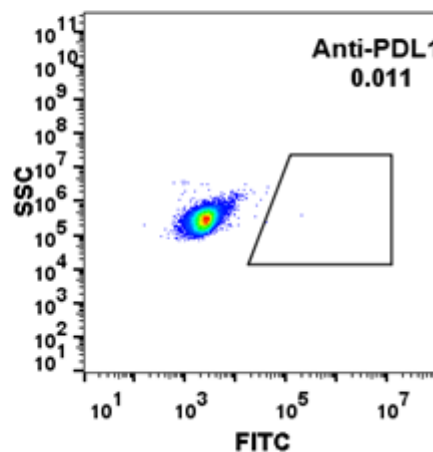


Figure 2. HEK293 cell line transfected with irrelevant protein (**B**) and human PDL1 (**A**) were surface stained with anti-PDL1 neutralizing antibody 1 μ g/ml (atezolizumab) followed by Alexa 488-conjugated anti-human IgG secondary antibody.

