

PRODUCT INFORMATION

Uniprot ID	Q9NZQ7
Common Name	MSB0010718C,MSB-0010718C,MSB0010682
Conjugate	Unconjugated
Synonyms	Programmed cell death 1 ligand 1, B7H1, B7-H1, PDL1, PDCD1L1, B7 homolog 1, B7 homologue 1, CD274
Applications	ELISA, Flow Cyt
Recommended Dilutions	ELISA 1:5000-10000, Flow Cyt 1:100
Formulation & Reconstitution	Lyophilized from sterile PBS, pH 7.4. Normally 5 % - 8% trehalose is added as protectants before lyophilization. Please see Certificate of Analysis for specific instructions of reconstitution.
Host Species	Homo sapiens
IgG type	Human IgG1(E356D,M358L) - lambda
Reactivity	Human
Target	PD-L1
Description	Anti-PD-L1(avelumab biosimilar) mAb
Delivery	In Stock
Storage & Shipping	Store at -20°C to -80°C for 12 months in lyophilized form. After reconstitution, if not intended for use within a month, aliquot and store at -80°C (Avoid repeated freezing and thawing). Lyophilized antibodies are shipped at ambient temperature.
Background	Research grade biosimilar. Not for use in therapeutic or diagnostic procedures for humans or animals.
Usage	Research use only
DIMA Disclaimer	All DIMA recombinant antibodies are genuinely generated by DIMA Biotech. They are all under patent application. Any protein sequencing or reverse engineering attempt is prohibited. We are actively scrutinizing all patent application to ensure no IP infringement.



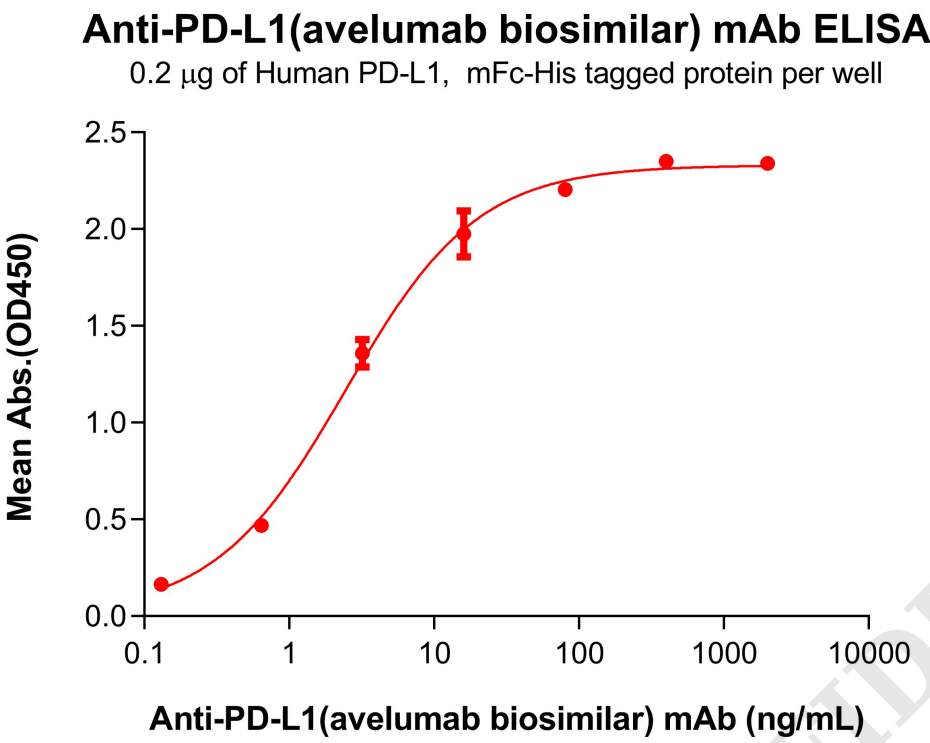


Figure 1. ELISA plate pre-coated by 2 μ g/mL (100 μ L/well) Human PD-L1 Protein, mFc-His Tag (PME100023) can bind Anti-PD-L1(avelumab biosimilar) mAb (BME100418) in a linear range of 0.64–16 ng/mL.

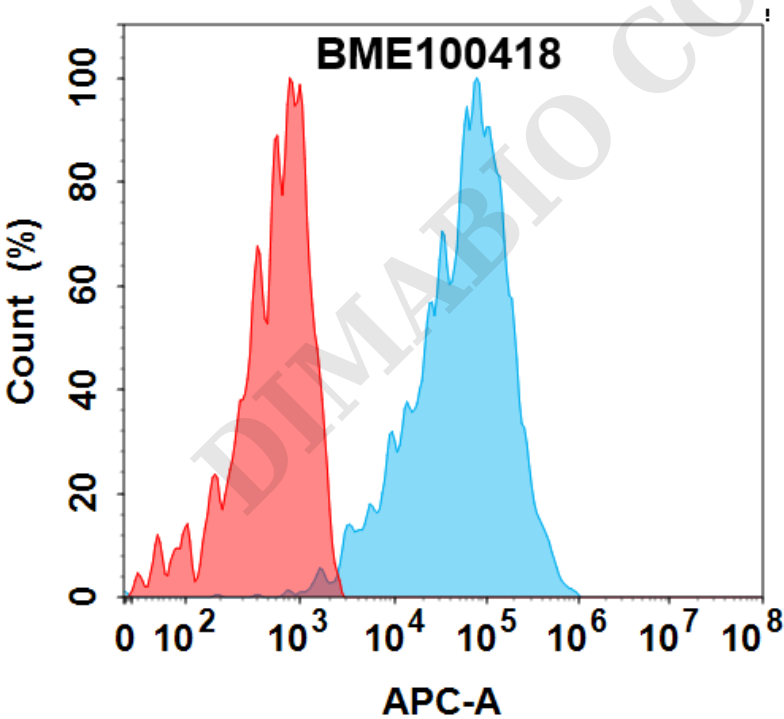


Figure 2. Flow cytometry analysis with 0.5 μ g/mL Anti-PD-L1(avelumab biosimilar) mAb (BME100418) on Expi293 cells transfected with Human PD-L1 protein (Blue histogram) or Expi293 transfected with irrelevant protein (Red histogram).

