

PRODUCT INFORMATION

Uniprot ID	P43489
Common Name	GBR-830
Conjugate	Unconjugated
Synonyms	TNFRSF4;OX40;CD134;OX40L receptor;ACT35;TXGP1L
Applications	ELISA, Flow Cyt
Recommended Dilutions	ELISA 1:5000-10000, Flow Cyt 1:100
Formulation & Reconstitution	Lyophilized from sterile PBS, pH 7.4. Normally 5 % - 8% trehalose is added as protectants before lyophilization. Please see Certificate of Analysis for specific instructions of reconstitution.
Host Species	Humanized
IgG type	Human IgG1(E356D,M358L) - kappa
Reactivity	Human
Target	OX40
Description	Anti-OX40(telazorlimab biosimilar) mAb
Delivery	In Stock
Storage&Shipping	Store at -20°C to -80°C for 12 months in lyophilized form. After reconstitution, if not intended for use within a month, aliquot and store at -80°C (Avoid repeated freezing and thawing). Lyophilized antibodies are shipped at ambient temperature.
Background	Research grade biosimilar. Not for use in therapeutic or diagnostic procedures for humans or animals.
Usage	Research use only



Anti-OX40(telazorlimab biosimilar) mAb ELISA

0.2 µg of Human OX40, hFc-His tagged protein per well

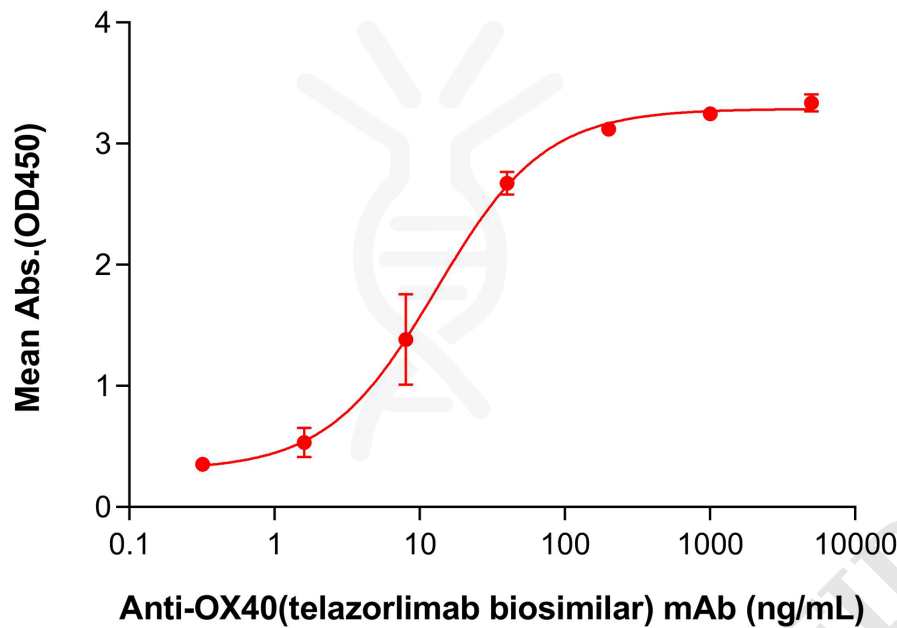


Figure 1. ELISA plate pre-coated by 2 µg/mL (100 µL/well) Human OX40 Protein, hFc-His tag(PME100022) can bind Anti-OX40(telazorlimab biosimilar) mAb (BME100692) in a linear range of 8-40 ng/mL. In order to specifically detect BME100692, mouse anti-human Fab-specific antibody was used as detection antibody.

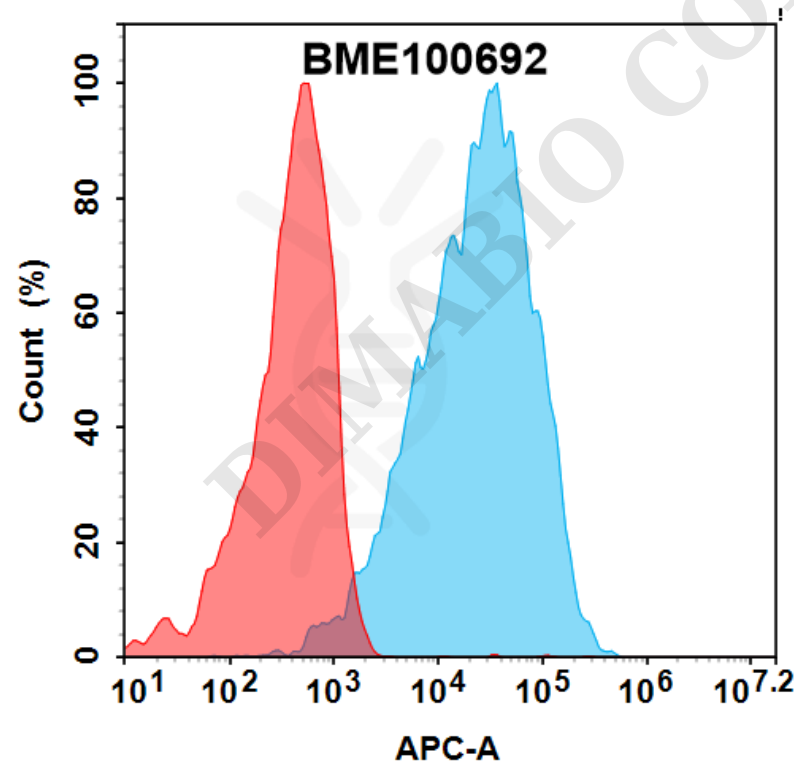


Figure 2. Flow cytometry analysis with 0.5 µg/ml Anti-OX40(telazorlimab biosimilar) mAb (BME100692) on HEK293 cells transfected with Human OX40 protein (Blue histogram) or HEK293 transfected with irrelevant protein (Red histogram).



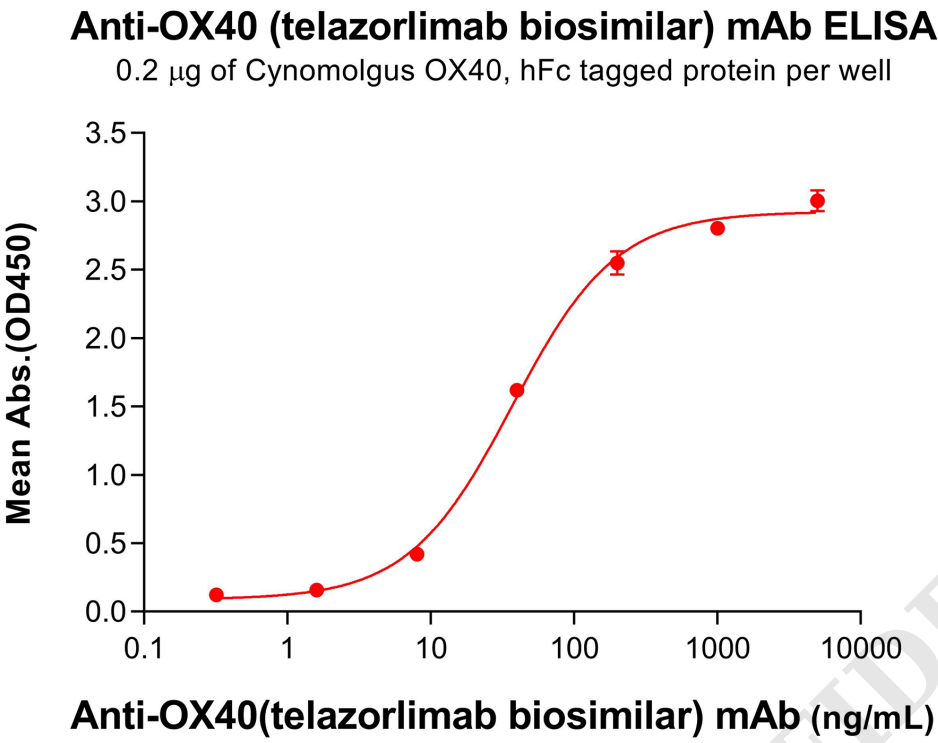


Figure 3. ELISA plate pre-coated by 2 µg/mL (100 µL/well) Cynomolgus OX40 Protein, hFc Tag (PME-C100100) can bind Anti-OX40(telazorlimab biosimilar) mAb (BME100692) in a linear range of 8-40 ng/mL.

