

PRODUCT INFORMATION

Uniprot ID	P26718
Common Name	5C5
Conjugate	Unconjugated
Synonyms	NKG2D;CD314;KLRK1;NK cell receptor D
Applications	ELISA, Flow Cyt
Recommended Dilutions	ELISA 1:5000-10000, Flow Cyt 1:100
Formulation & Reconstitution	Lyophilized from sterile PBS, pH 7.4. Normally 5 % - 8% trehalose is added as protectants before lyophilization. Please see Certificate of Analysis for specific instructions of reconstitution.
Host Species	Humanized
IgG type	Human IgG1(L234A,L235A) - Kappa
Reactivity	Human
Target	NKG2D
Description	Anti-NKG2D(5C5 biosimilar, L234A/L235A) mAb
Delivery	In Stock
Storage & Shipping	Store at -20°C to -80°C for 12 months in lyophilized form. After reconstitution, if not intended for use within a month, aliquot and store at -80°C (Avoid repeated freezing and thawing). Lyophilized antibodies are shipped at ambient temperature.
Background	Research grade biosimilar. Not for use in therapeutic or diagnostic procedures for humans or animals.
Usage	Research use only
DIMA Disclaimer	All DIMA recombinant antibodies are genuinely generated by DIMA Biotech. They are all under patent application. Any protein sequencing or reverse engineering attempt is prohibited. We are actively scrutinizing all patent application to ensure no IP infringement.



Anti-NKG2D(5C5 biosimilar, L234A/L235A) mAb ELISA
0.2 µg of Human NKG2D, mFc tagged protein per well

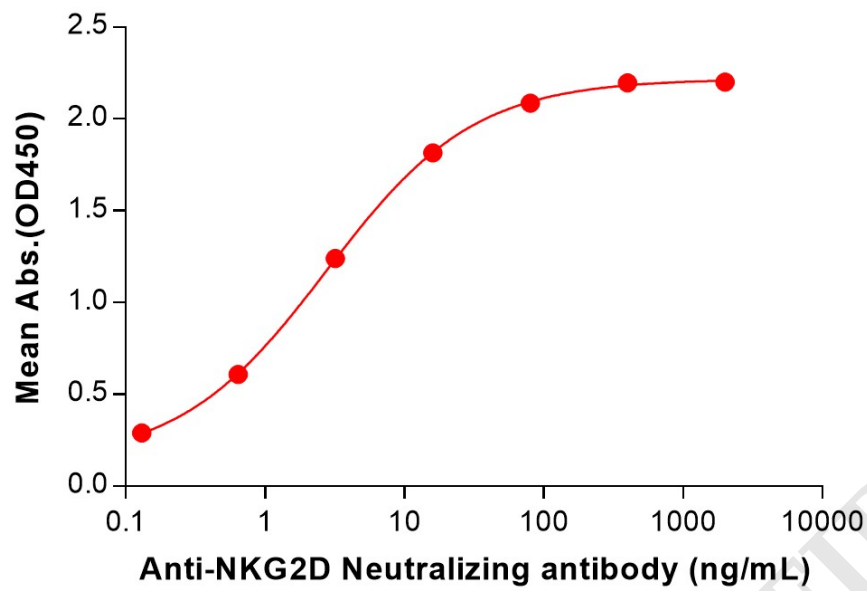


Figure 1. ELISA plate pre-coated by 2 µg/mL (100 µL/well) Human NKG2D Protein, mFc Tag (PME100079) can bind Anti-NKG2D(5C5 biosimilar, L234A/L235A) mAb (BME100229) in a linear range of 0.13-16 ng/mL.

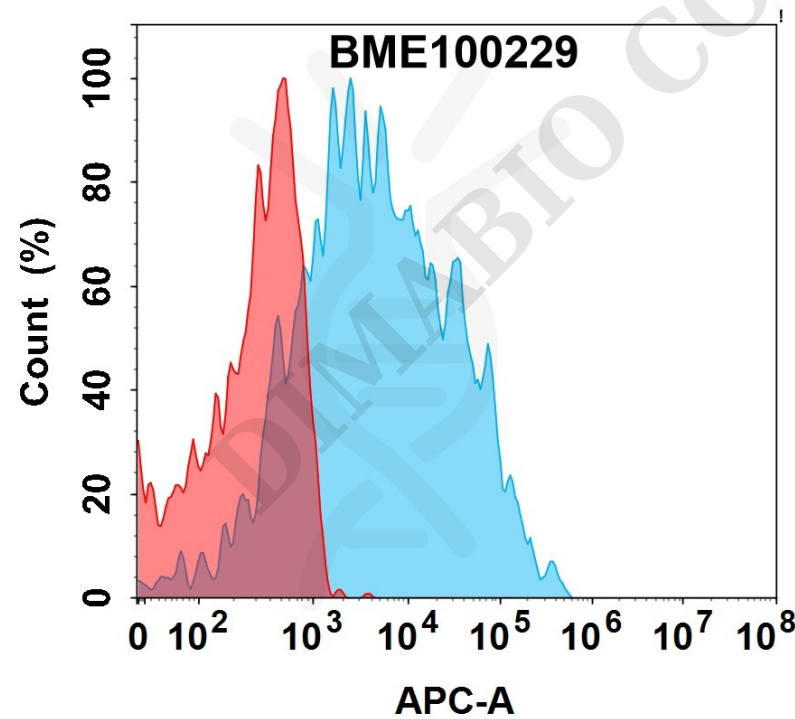


Figure 2. Flow cytometry analysis with 1µg/mL Anti-NKG2D(5C5 biosimilar, L234A/L235A) mAb (BME100229) on Expi293 cells transfected with Human NKG2D and DAP10 protein (Blue histogram) or Expi293 transfected with Human DAP10 protein (Red histogram).

