

**PRODUCT INFORMATION**

<b>Clone ID</b>	OTI2F6 (formerly 2F6)
<b>Target</b>	mStrawberry
<b>Synonyms</b>	N/A
<b>Host Species</b>	Mouse
<b>Description</b>	Carrier-free (BSA/glycerol-free) Mouse monoclonal mStrawberry antibody, clone OTI2F6
<b>Delivery</b>	3-4week
<b>Uniprot ID</b>	N/A
<b>IgG type</b>	IgG2b
<b>Clonality</b>	Monoclonal
<b>Reactivity</b>	N/A
<b>Applications</b>	WB
<b>Recommended Dilutions</b>	WB: 1:2000
<b>Purification</b>	N/A
<b>Formulation &amp; Reconstitution</b>	Lyophilized powder (original buffer 1X PBS, pH 7.3, 8% trehalose)
<b>Storage&amp;Shipping</b>	Store at -20°C.
<b>Background</b>	N/A
<b>Usage</b>	Research use only
<b>Conjugate</b>	Unconjugated

DIMABIO CONFIDENTIAL



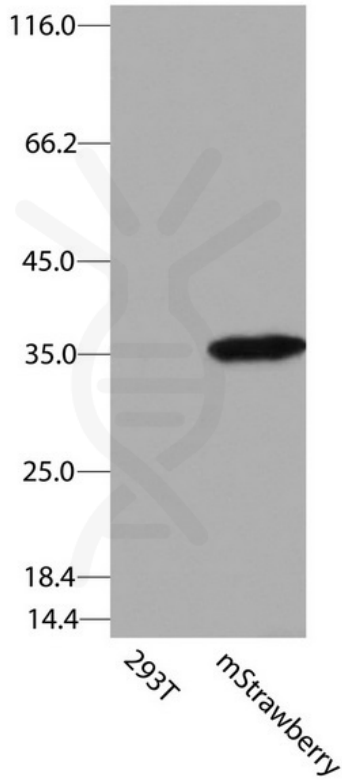


Figure 1. HEK293T cells were transfected with the pCMV6-ENTRY control (Left lane) or pCMV6-ENTRY mStrawberry (Right lane) cDNA for 48 hrs and lysed. Equivalent amounts of cell lysates (5 ug per lane) were separated by SDS-PAGE and immunoblotted with anti-mStrawberry (DME900024, 1:2000).

DIMABIO CONFIDENTIAL

