

PRODUCT INFORMATION

Clone ID	7F12
Target	MICA
Synonyms	MIC-A; PERB11.1
Host Species	Rabbit
Description	Anti-MICA antibody(7F12), IgG1 Chimeric mAb
Delivery	In Stock
Uniprot ID	Q29983
IgG type	Rabbit/Human Fc chimeric IgG1
Clonality	Monoclonal
Reactivity	Human
Applications	WB; Flow Cyt
Recommended Dilutions	WB 1:1000; Flow Cyt 1:100
Purification	Purified from cell culture supernatant by affinity chromatography
Formulation & Reconstitution	Lyophilized from sterile PBS, pH 7.4. Normally 5 % - 8% trehalose is added as protectants before lyophilization. Please see Certificate of Analysis for specific instructions of reconstitution.
Storage&Shipping	Store at -20°C to -80°C for 12 months in lyophilized form. After reconstitution, if not intended for use within a month, aliquot and store at -80°C (Avoid repeated freezing and thawing). Lyophilized proteins are shipped at ambient temperature.
Background	This gene encodes the highly polymorphic major histocompatibility complex class I chain-related protein A. The protein product is expressed on the cell surface, although unlike canonical class I molecules it does not seem to associate with beta-2-microglobulin. It is a ligand for the NKG2-D type II integral membrane protein receptor. The protein functions as a stress-induced antigen that is broadly recognized by intestinal epithelial gamma delta T cells. Variations in this gene have been associated with susceptibility to psoriasis 1 and psoriatic arthritis, and the shedding of MICA-related antibodies and ligands is involved in the progression from monoclonal gammopathy of undetermined significance to multiple myeloma. Alternative splicing of this gene results in multiple transcript variants. [provided by RefSeq, Jan 2014]
Usage	Research use only
Conjugate	Unconjugated
DIMA Disclaimer	All DIMA recombinant antibodies are genuinely generated by DIMA Biotech. They are all under patent application. Any protein sequencing or reverse engineering attempt is prohibited. We are actively scr



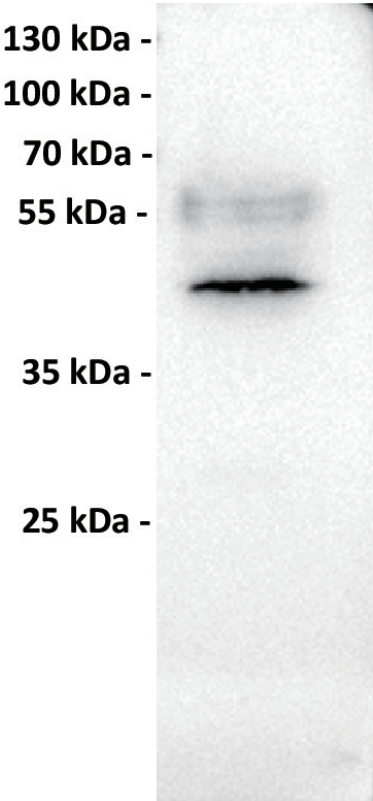


Figure 1. Anti-MICA antibody (SKU# DMC100608) at 1/1000 dilution
Lane : HeLa (human cervical adenocarcinoma epithelial cell), whole cell lysate
Secondary : Goat Anti-Rabbit IgG H&L (HRP) at 1/5000 dilution
band size: 43 kDa

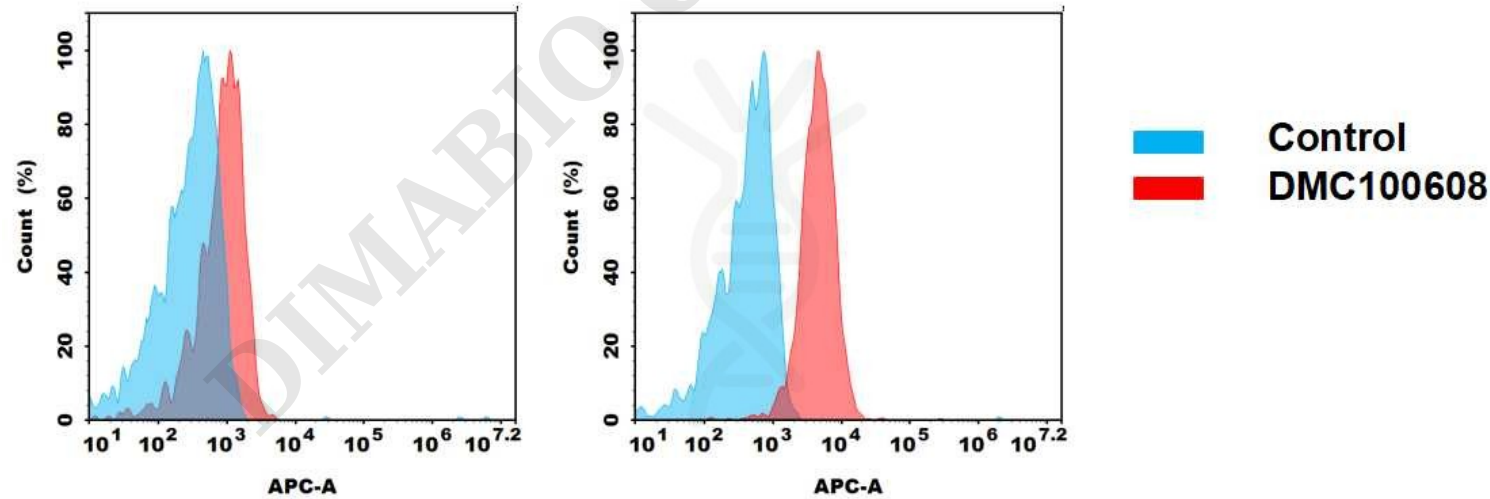


Figure 2. Flow cytometry analysis of antigen binding of anti-human MICA mAb(DMC100608).
(A) DMC100608 does bind to PC3 cells that weakly express MICA
(B) A clear peak shift of DMC100608 was seen compared to the control when incubated with MICA-expressing HeLa cells, indicating strong binding of DMC100608 to MICA.
Antibodies were incubated at 10 ug/mL.

