

PRODUCT INFORMATION

Clone ID	OTI2F6 (formerly 2F6)
Target	mGFP, mCFP, mYFP, KillerRed
Synonyms	N/A
Host Species	Mouse
Description	Carrier-free (BSA/glycerol-free) Mouse monoclonal mGFP/mCFP/mYFP/KillerRed antibody, clone OTI2F6
Delivery	3-4week
Uniprot ID	N/A
IgG type	IgG1
Clonality	Monoclonal
Reactivity	N/A
Applications	WB
Recommended Dilutions	WB: 1:500
Purification	N/A
Formulation & Reconstitution	Lyophilized powder (original buffer 1X PBS, pH 7.3, 8% trehalose)
Storage&Shipping	Store at -20°C.
Background	N/A
Usage	Research use only
Conjugate	Unconjugated

DIMABIO CONFIDENTIAL



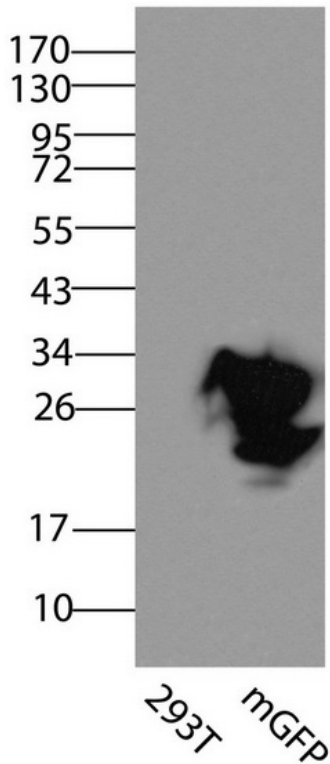


Figure 1. HEK293T cells were transfected with the pCMV6-ENTRY control (Left lane) or pCMV6-ENTRY mGFP (Right lane) cDNA for 48 hrs and lysed. Equivalent amounts of cell lysates (5 ug per lane) were separated by SDS-PAGE and immunoblotted with anti-mGFP/mCFP/mYFP/KillerRed (DME900030, 1:500).

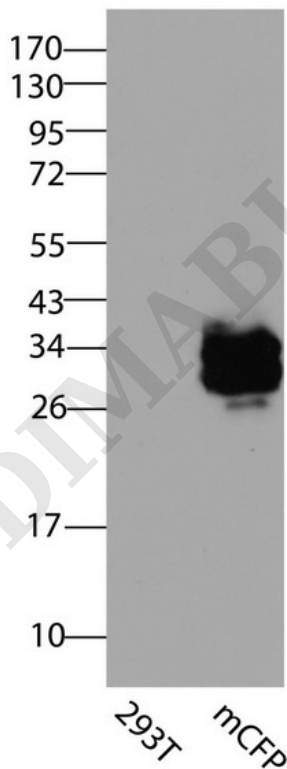


Figure 2. HEK293T cells were transfected with the pCMV6-ENTRY control (Left lane) or pCMV6-ENTRY mCFP (Right lane) cDNA for 48 hrs and lysed. Equivalent amounts of cell lysates (5 ug per lane) were separated by SDS-PAGE and immunoblotted with anti-mGFP/mCFP/mYFP/KillerRed (DME900030, 1:500).



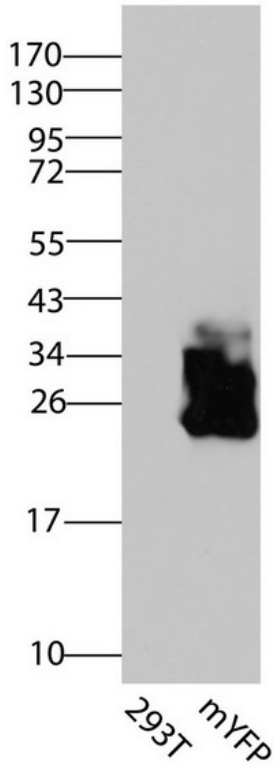


Figure 3. HEK293T cells were transfected with the pCMV6-ENTRY control (Left lane) or pCMV6-ENTRY mYFP (Right lane) cDNA for 48 hrs and lysed. Equivalent amounts of cell lysates (5 ug per lane) were separated by SDS-PAGE and immunoblotted with anti-mGFP/mCFP/mYFP/KillerRed (DME900030, 1:500).

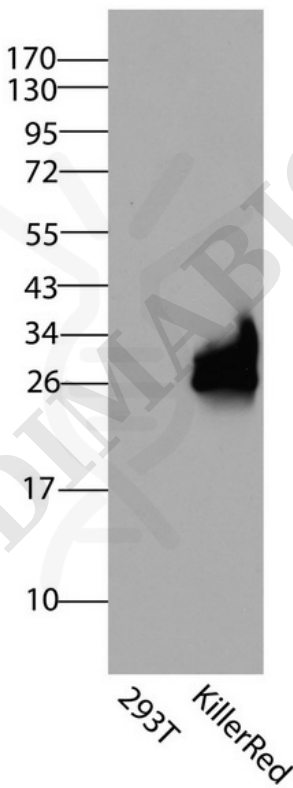


Figure 4. HEK293T cells were transfected with the pCMV6-ENTRY control (Left lane) or pCMV6-ENTRY KillerRed (Right lane) cDNA for 48 hrs and lysed. Equivalent amounts of cell lysates (5 ug per lane) were separated by SDS-PAGE and immunoblotted with anti-mGFP/mCFP/mYFP/KillerRed (DME900030, 1:500).

