

PRODUCT INFORMATION

Clone ID	1D12
Target	MELTF
Synonyms	CD228;MAP97;MF12;MTf;MTF1
Host Species	Rabbit
Description	Anti-MELTF antibody(1D12), Rabbit mAb
Delivery	In Stock
Uniprot ID	P08582
IgG type	Rabbit IgG
Clonality	Monoclonal
Reactivity	Human
Applications	Flow Cyt
Recommended Dilutions	Flow Cyt 1/100
Purification	Purified from cell culture supernatant by affinity chromatography
Formulation & Reconstitution	Lyophilized from sterile PBS, pH 7.4. Normally 5 % - 8% trehalose is added as protectants before lyophilization. Please see Certificate of Analysis for specific instructions of reconstitution.
Storage&Shipping	Store at -20°C to -80°C for 12 months in lyophilized form. After reconstitution, if not intended for use within a month, aliquot and store at -80°C (Avoid repeated freezing and thawing).
Background	The protein encoded by this gene is a cell-surface glycoprotein found on melanoma cells. The protein shares sequence similarity and iron-binding properties with members of the transferrin superfamily. The importance of the iron binding function has not yet been identified. This gene resides in the same region of chromosome 3 as members of the transferrin superfamily. Alternative splicing results in two transcript variants. [provided by RefSeq, Jul 2008]
Usage	Research use only
Conjugate	Unconjugated



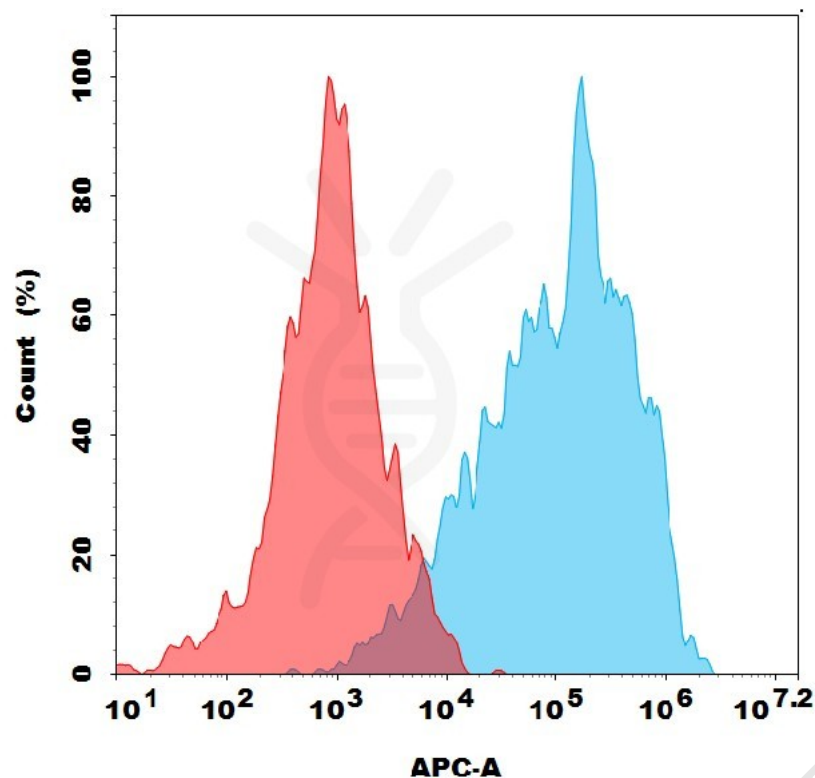


Figure 1. Flow cytometry analysis with 1 $\mu$ g/mL Anti-MELTF (1D12) mAb on HEK293 cells transfected with human MELTF (Blue histogram) or HEK293 transfected with irrelevant protein (Red histogram).

