

PRODUCT INFORMATION

| | |
|------------------------------|---|
| Common Name | MCS-110, MCS110 |
| Conjugate | Unconjugated |
| Synonyms | CSF-1;MCSF |
| Applications | ELISA; Flow Cyt |
| Recommended Dilutions | ELISA 1:5000-10000; Flow Cyt 1:100 |
| Formulation & Reconstitution | Lyophilized from sterile PBS, pH 7.4. Normally 5 % - 8% trehalose is added as protectants before lyophilization. Please see Certificate of Analysis for specific instructions of reconstitution. |
| Host Species | Humanized |
| IgG type | Human IgG1 - kappa |
| Reactivity | Human |
| Target | M-CSF |
| Uniprot ID | P09603 |
| Description | Anti-M-CSF(lacnotuzumab biosimilar) mAb |
| Delivery | In Stock |
| Storage&Shipping | Store at -20°C to -80°C for 12 months in lyophilized form. After reconstitution, if not intended for use within a month, aliquot and store at -80°C (Avoid repeated freezing and thawing). Lyophilized proteins are shipped at ambient temperature. |
| Background | Research grade biosimilar. Not for use in therapeutic or diagnostic procedures for humans or animals. |
| Usage | Research use only |



Anti-M-CSF (lacnotuzumab biosimilar) mAb ELISA
0.2 µg of Human M-CSF, His tagged protein per well

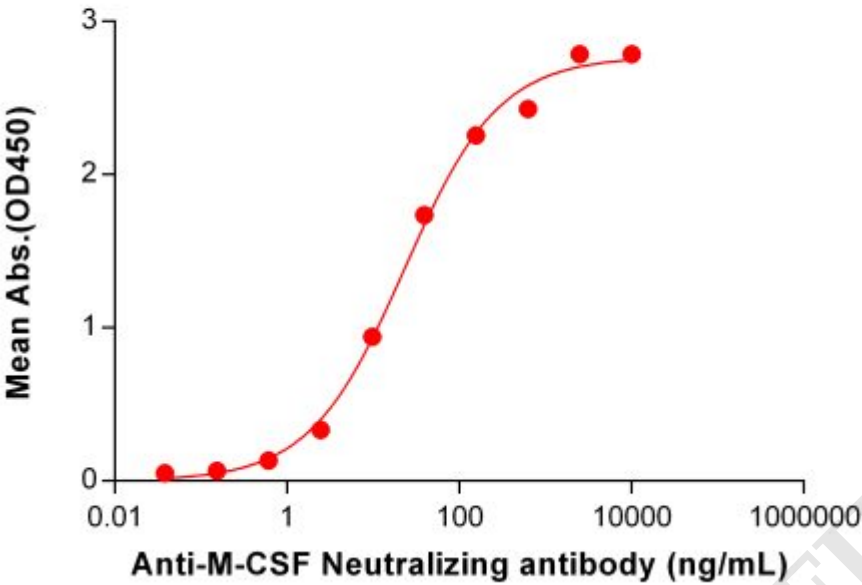


Figure 1. ELISA plate pre-coated by 2 µg/mL (100 µL/well) Human M-CSF Protein, His Tag ([getskuurl sku="PME100569"]) can bind Anti-M-CSF Neutralizing antibody (**BME100104**) in a linear range of 2.44-156.25 ng/mL.

Anti-M-CSF (lacnotuzumab biosimilar) mAb ELISA
0.2 µg of Human M-CSF, hFc tagged protein per well

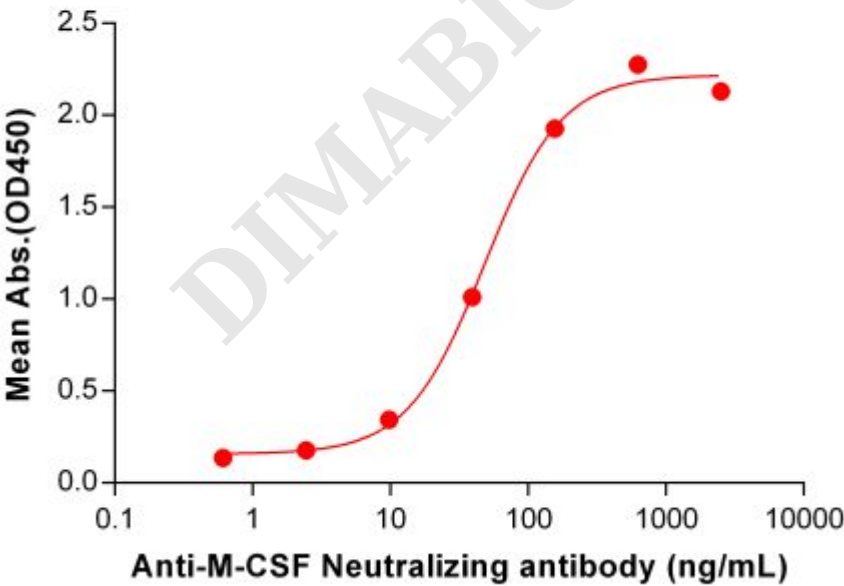


Figure 2. ELISA plate pre-coated by 2 µg/mL (100 µL/well) Human M-CSF Protein, hFc Tag (PME100550) can bind Anti-M-CSF Neutralizing antibody (BME100104) in a linear range of 9.77-156.25 ng/mL. In order to specifically detect BME100104, mouse anti-human Fab-specific antibody was used as detection antibody.



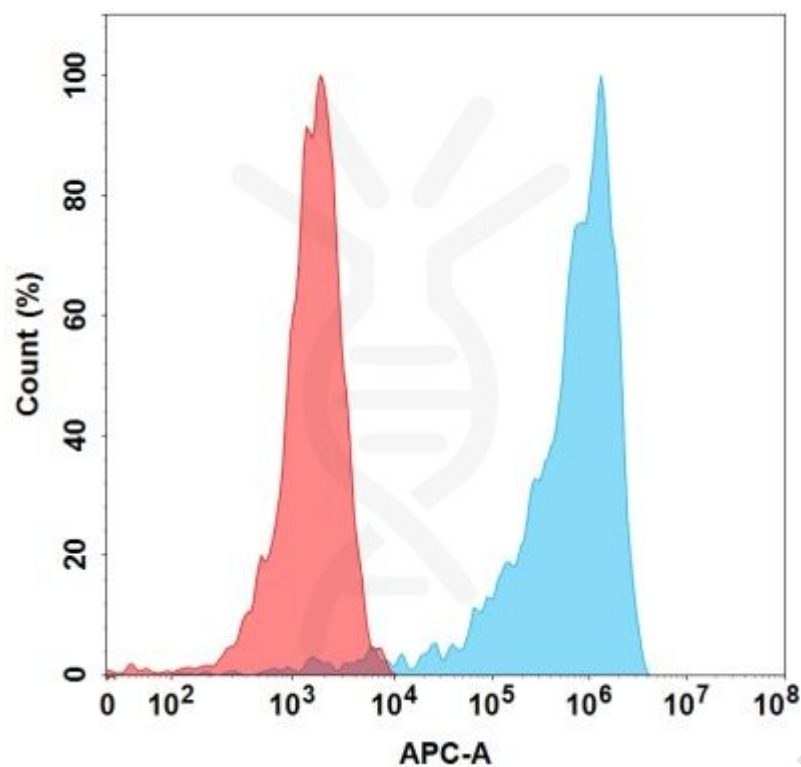


Figure 3.Flow cytometry analysis with 1 µg/mL Anti-M-CSF (lacnotuzumab biosimilar) mAb (BME100104) on HEK293 cells transfected with Human M-CSF protein (Blue histogram) or HEK293 transfected with irrelevant protein (Red histogram).

