

PRODUCT INFORMATION

Clone ID	DMC437
Target	M-CSF
Synonyms	CSF-1; MCSF
Host Species	Rabbit
Description	Anti-M-CSF antibody(DMC437); IgG1 Chimeric mAb
Delivery	In Stock
Uniprot ID	P09603
IgG type	Rabbit/Human Fc chimeric IgG1
Clonality	Monoclonal
Reactivity	Human
Applications	Flow Cyt
Recommended Dilutions	Flow Cyt 1:100
Purification	Purified from cell culture supernatant by affinity chromatography
Formulation & Reconstitution	Lyophilized from sterile PBS, pH 7.4. Normally 5 % - 8% trehalose is added as protectants before lyophilization. Please see Certificate of Analysis for specific instructions of reconstitution.
Storage & Shipping	Store at -20°C to -80°C for 12 months in lyophilized form. After reconstitution, if not intended for use within a month, aliquot and store at -80°C (Avoid repeated freezing and thawing). Lyophilized proteins are shipped at ambient temperature.
Background	The protein encoded by this gene is a cytokine that controls the production; differentiation; and function of macrophages. The active form of the protein is found extracellularly as a disulfide-linked homodimer; and is thought to be produced by proteolytic cleavage of membrane-bound precursors. The encoded protein may be involved in development of the placenta. Alternate splicing results in multiple transcript variants.
Usage	Research use only
Conjugate	Unconjugated
DIMA Disclaimer	All DIMA recombinant antibodies are genuinely generated by DIMA Biotech. They are all under patent application. Any protein sequencing or reverse engineering attempt is prohibited. We are actively scrutinizing all patent application to ensure no IP infringement.



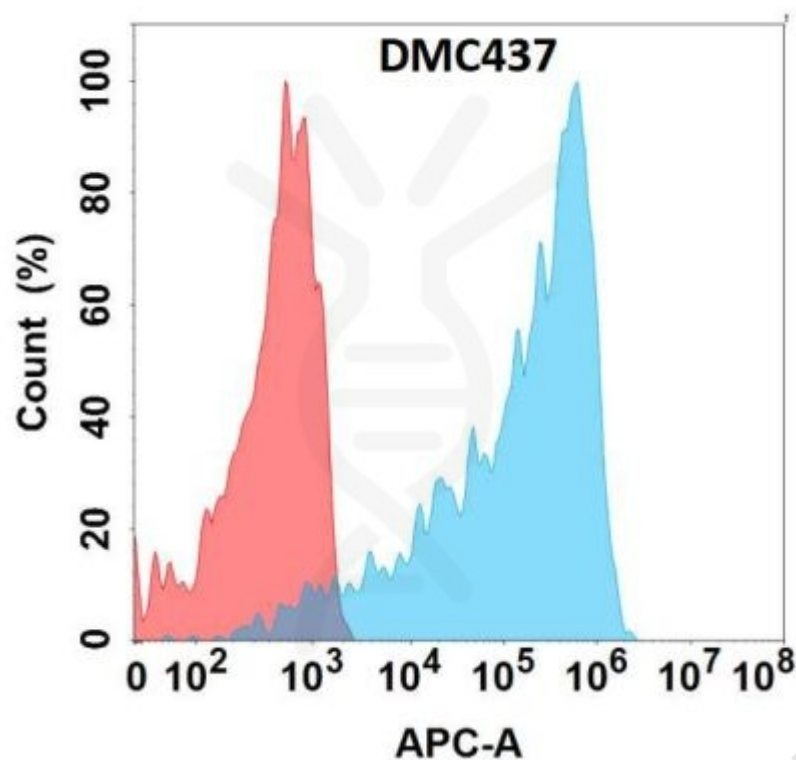


Figure 1. Flow cytometry analysis with Anti-M-CSF (DMC437) on HEK293 cells transfected with human M-CSF (Blue histogram) or HEK293 transfected with irrelevant protein (Red histogram).

