

PRODUCT INFORMATION

Uniprot ID	Q16553
Common Name	ANTI-LY6E□DLYE-5953A□DLYE5953A□RG 7841
Conjugate	Unconjugated
Synonyms	RIGE; SCA2; RIG-E; SCA-2; TSA-1
Applications	ELISA, Flow Cyt
Recommended Dilutions	ELISA 1:5000-10000, Flow Cyt 1:100
Formulation & Reconstitution	Lyophilized from sterile PBS, pH 7.4. Normally 5 % - 8% trehalose is added as protectants before lyophilization. Please see Certificate of Analysis for specific instructions.
Host Species	Humanized
IgG type	Human IgG1 - kappa
Reactivity	Human
Target	LY6E
Description	Anti-LY6E(RG7841 biosimilar) mAb
Delivery	In Stock
Storage & Shipping	Store at -20°C to -80°C for 12 months in lyophilized form. After reconstitution, if not intended for use within a month, aliquot and store at -80°C (Avoid repeated freezing and thawing). Lyophilized antibodies are shipped at ambient temperature.
Background	Research grade biosimilar. Not for use in therapeutic or diagnostic procedures for humans or animals.
Usage	Research use only



Anti-LY6E(RG7841 biosimilar) mAb ELISA
0.2 µg of Human LY6E, hFc tagged protein per well

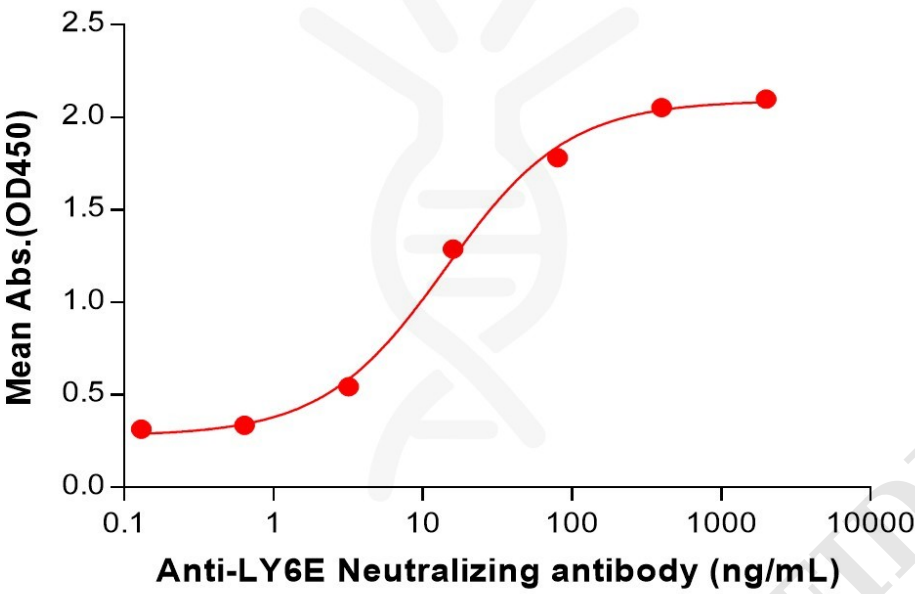


Figure 1. ELISA plate pre-coated by 2 µg/mL (100 µL/well) Human LY6E Protein, hFc Tag (PME101539) can bind Anti-LY6E(RG7841 biosimilar) mAb (BME100224) in a linear range of 3.20–80 ng/mL. In order to specifically detect BME100224, mouse anti-human Fab-specific antibody was used as detection antibody.

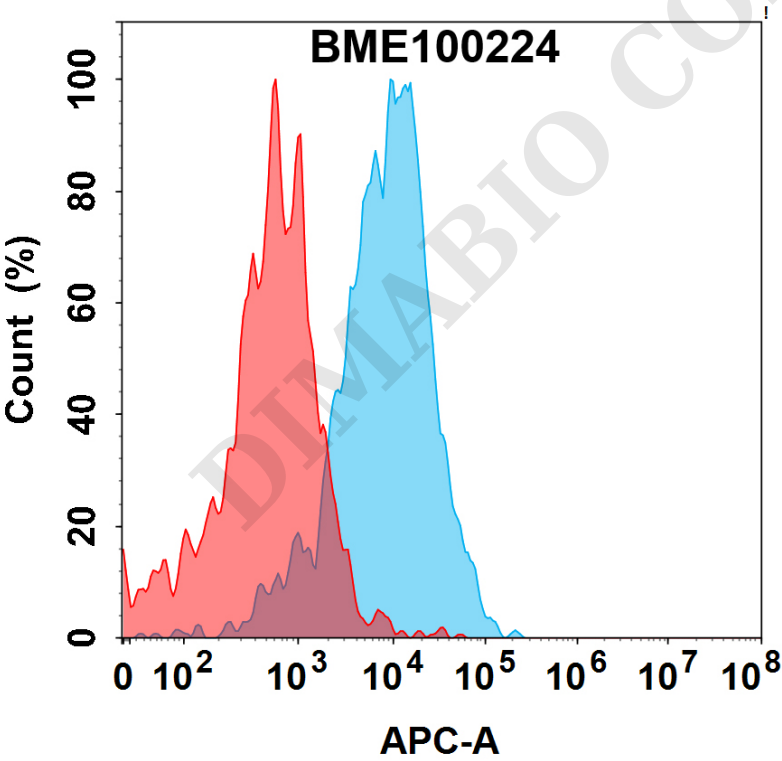


Figure 2. Flow cytometry analysis with 15µg/mL Anti-LY6E(RG7841 biosimilar) mAb (BME100224) on HEK293 cells transfected with Human LY6E protein (Blue histogram) or HEK293 transfected with irrelevant protein (Red histogram).

