

PRODUCT INFORMATION

Uniprot ID	P48357
Common Name	REGN4461
Conjugate	Unconjugated
Synonyms	LEP-R; CD295; DB; OBR
Applications	ELISA, Flow Cyt
Recommended Dilutions	ELISA 1:5000-10000, Flow Cyt 1:100
Formulation & Reconstitution	Lyophilized from sterile PBS, pH 7.4. Normally 5 % - 8% trehalose is added as protectants before lyophilization. Please see Certificate of Analysis for specific instructions of reconstitution.
Host Species	Homo sapiens Humanized
IgG type	Human IgG4 - Kappa
Reactivity	Human
Target	LEPR
Description	Anti-LEPR(mibavademab biosimilar) mAb
Delivery	In Stock
Storage & Shipping	Store at -20°C to -80°C for 12 months in lyophilized form. After reconstitution, if not intended for use within a month, aliquot and store at -80°C (Avoid repeated freezing and thawing). Lyophilized antibodies are shipped at ambient temperature.
Background	Research grade biosimilar. Not for use in therapeutic or diagnostic procedures for humans or animals.
Usage	Research use only
DIMA Disclaimer	All DIMA recombinant antibodies are genuinely generated by DIMA Biotech. They are all under patent application. Any protein sequencing or reverse engineering attempt is prohibited. We are actively scrutinizing all patent application to ensure no IP infringement.



**Anti-LEPR(mibavademab biosimilar) mAb ELISA**  
0.2 µg of Human LEPR, His tagged protein per well

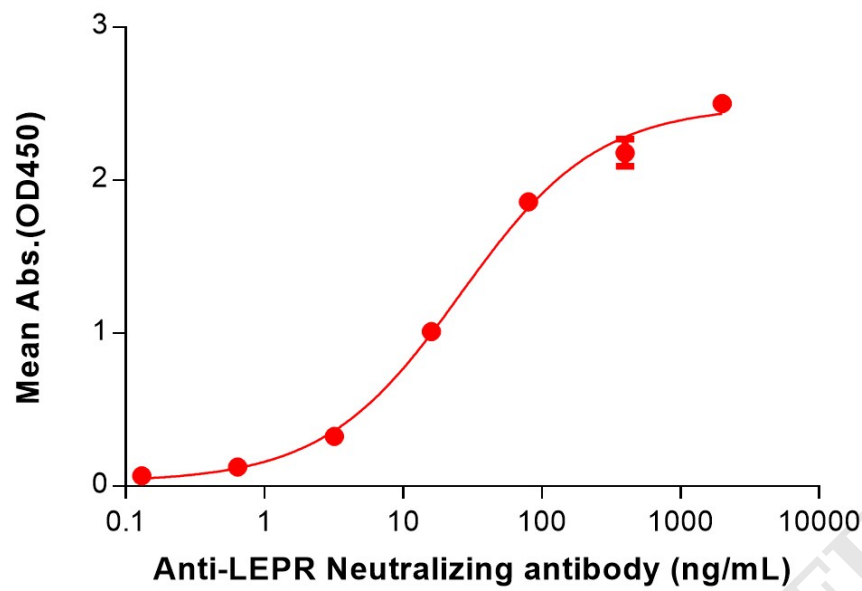


Figure 1. ELISA plate pre-coated by 2 µg/mL (100 µL/well) Human LEPR Protein, His Tag (PME101345) can bind Anti-LEPR(mibavademab biosimilar) mAb (BME100246) in a linear range of 3.20-400 ng/mL.

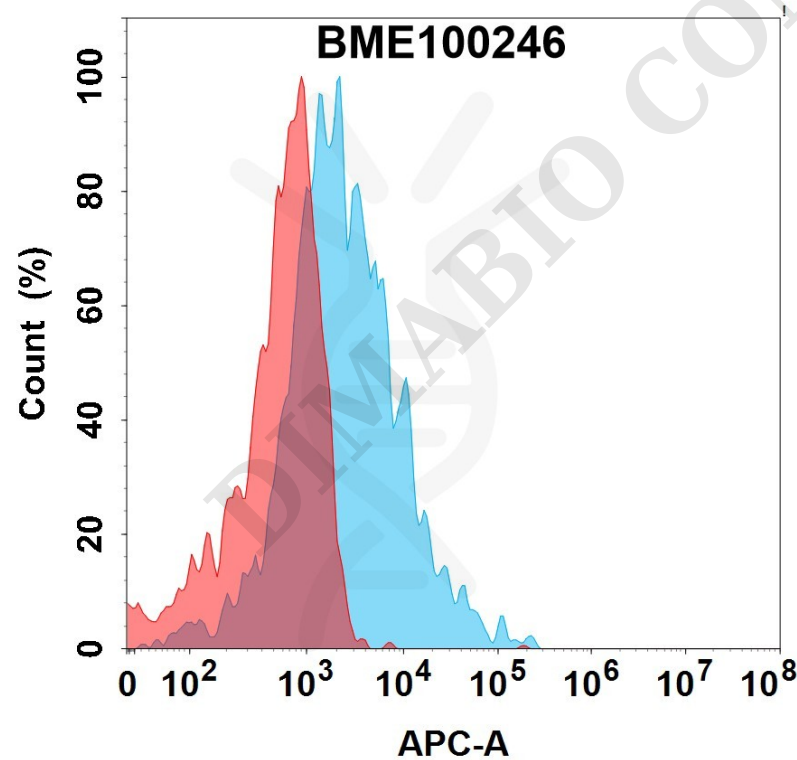


Figure 2. Flow cytometry analysis with 15µg/mL Anti-LEPR(mibavademab biosimilar) mAb (BME100246) on Expi293 cells transfected with Human LEPR protein (Blue histogram) or Expi293 transfected with irrelevant protein (Red histogram).

