

PRODUCT INFORMATION

Common Name	SGN B6A-Sigvotatug
Conjugate	Unconjugated
Synonyms	Integrin beta-6
Applications	Flow Cyt
Recommended Dilutions	Flow Cyt 1:100
Formulation & Reconstitution	Lyophilized from sterile PBS, pH 7.4. Normally 5 % - 8% trehalose is added as protectants before lyophilization. Please see Certificate of Analysis for specific instructions of reconstitution.
Host Species	Humanized
IgG type	Human IgG1(E356D,M358L) - kappa
Reactivity	Human
Target	ITGB6
Uniprot ID	P18564
Description	Anti-ITGB6(sigvotatug biosimilar) mAb
Delivery	In Stock
Storage & Shipping	Store at -20°C to -80°C for 12 months in lyophilized form. After reconstitution, if not intended for use within a month, aliquot and store at -80°C (Avoid repeated freezing and thawing). Lyophilized antibodies are shipped at ambient temperature.
Background	Research grade biosimilar. Not for use in therapeutic or diagnostic procedures for humans or animals.
Usage	Research use only



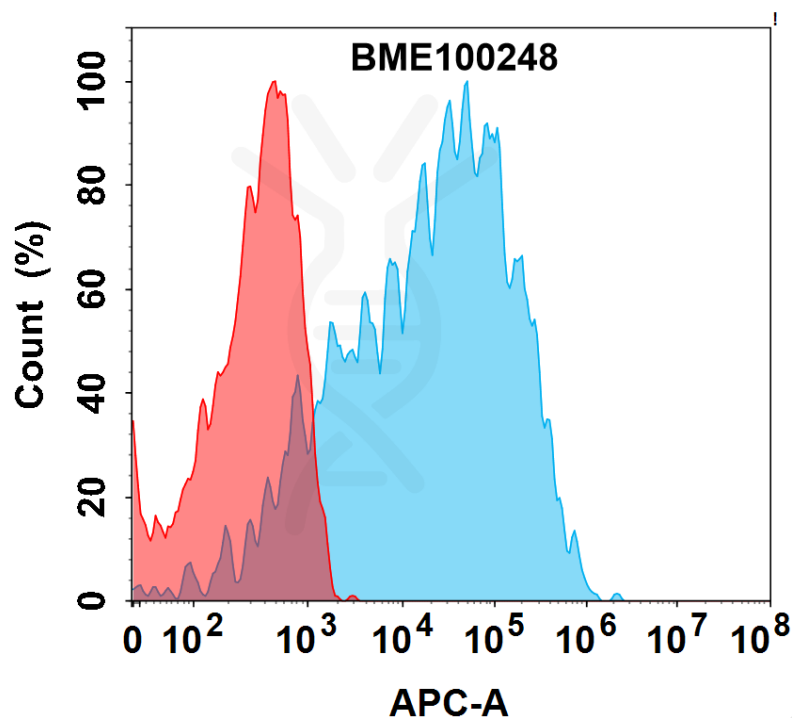


Figure 1. Flow cytometry analysis with 1 $\mu$ g/mL Anti-ITGB6(sigvotatug biosimilar) mAb(BME100248) on HEK293 cells transfected with Human ITGB6&ITGAV protein (Blue histogram) or HEK293 transfected with Human ITGAV protein (Red histogram).

