

PRODUCT INFORMATION

Common Name	CIM 331,CIM331
Conjugate	Unconjugated
Synonyms	CRL; GPL; CRL3; GLMR; GLM-R; PLCA2; hGLM-R; IL-31RA; PRO21384; zcytoR17
Applications	ELISA, Flow Cyt
Recommended Dilutions	ELISA 1:5000-10000, Flow Cyt 1:100
Formulation & Reconstitution	Lyophilized from sterile PBS, pH 7.4. Normally 5 % - 8% trehalose is added as protectants before lyophilization. Please see Certificate of Analysis for specific instructions of reconstitution.
Host Species	Humanized
IgG type	Human IgG2(C135S,R137K,E141G,S142G,C223S,H268Q,R355Q,S378A,Q419E) - Kappa
Reactivity	Human
Target	IL31RA
Uniprot ID	Q8NI17
Description	Anti-IL31RA(nemolizumab biosimilar) mAb
Delivery	In Stock
Storage & Shipping	Store at -20°C to -80°C for 12 months in lyophilized form. After reconstitution, if not intended for use within a month, aliquot and store at -80°C (Avoid repeated freezing and thawing). Lyophilized antibodies are shipped at ambient temperature.
Background	Research grade biosimilar. Not for use in therapeutic or diagnostic procedures for humans or animals.
Usage	Research use only
DIMA Disclaimer	All DIMA recombinant antibodies are genuinely generated by DIMA Biotech. They are all under patent application. Any protein sequencing or reverse engineering attempt is prohibited. We are actively scrutinizing all patent application to ensure no IP infringement.



Anti-IL31RA(nemolizumab biosimilar) mAb ELISA
0.2 µg of Human IL31RA, His tagged protein per well

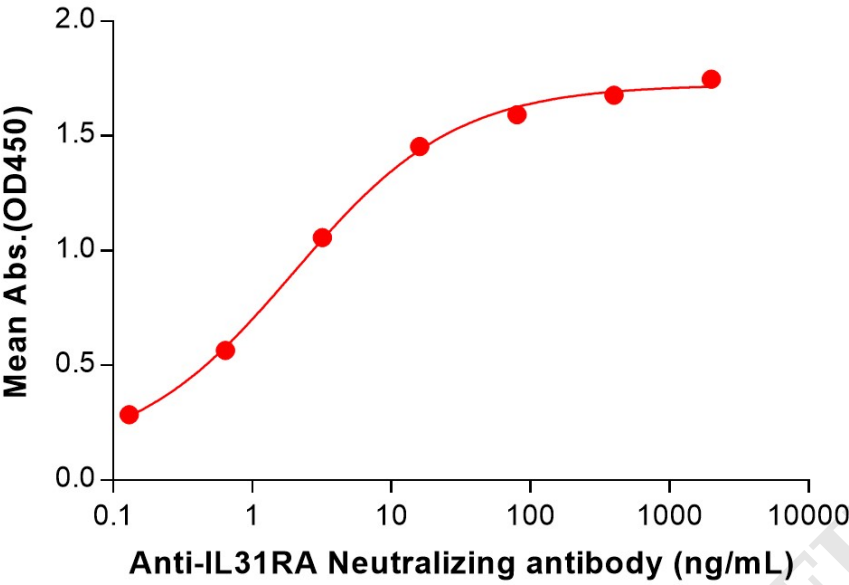


Figure 1. ELISA plate pre-coated by 2 µg/mL (100 µL/well) Human IL31RA Protein, His Tag (PME101406) can bind Anti-IL31RA(nemolizumab biosimilar) mAb (BME100231) in a linear range of 0.13–16 ng/mL.

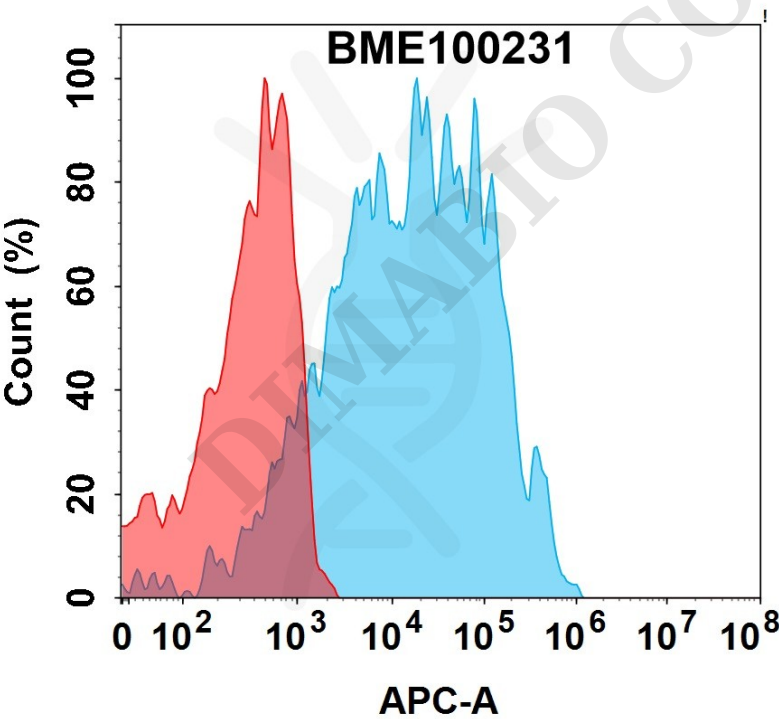


Figure 2. Flow cytometry analysis with 1µg/mL Anti-IL31RA(nemolizumab biosimilar) mAb (BME100231) on Expi293 cells transfected with Human IL31RA and OSMR protein (Blue histogram) or Expi293 transfected with Human OSMR protein (Red histogram).



Anti-IL31RA(nemolizumab biosimilar) mAb ELISA

0.2 μ g of Human IL31RA(20-225), hFc tagged protein per well

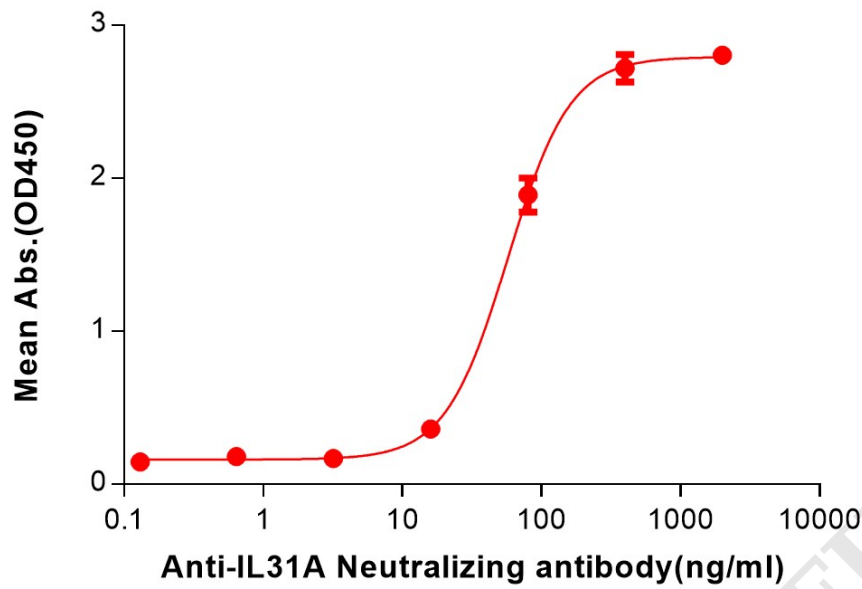


Figure 3. ELISA plate pre-coated by 2 μ g/mL (100 μ L/well) Human IL31RA(20-225) Protein, hFc Tag (PME101699) can bind Anti-IL31RA(nemolizumab biosimilar) mAb (BME100231) in a linear range of 16–400 ng/mL. In order to specifically detect BME100231, mouse human Fab-specific antibody was used as detection antibody.

Anti-IL31RA(nemolizumab biosimilar) mAb ELISA

0.2 μ g of Human IL31RA(20-225), mFc tagged protein per well

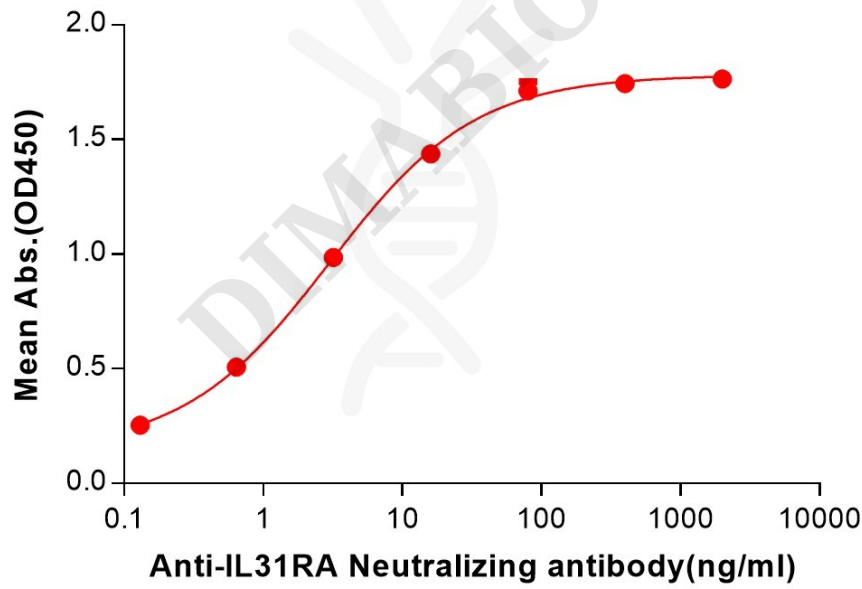


Figure 4. ELISA plate pre-coated by 2 μ g/mL (100 μ L/well) Human IL31RA(20-225) Protein, mFc Tag (PME101700) can bind Anti-IL31RA(nemolizumab biosimilar) mAb (BME100231) in a linear range of 0.13–16 ng/mL.

