

**PRODUCT INFORMATION**

<b>Common Name</b>	temtokibart
<b>Conjugate</b>	Unconjugated
<b>Synonyms</b>	I22R1,IL22R
<b>Applications</b>	ELISA, Flow Cyt
<b>Endotoxin</b>	Less than 1.0 EU/ $\mu$ g by the LAL method. For <1 EU/mg requirements, please contact us for customization.
<b>Recommended Dilutions</b>	ELISA 1:5000-10000, Flow Cyt 1:100
<b>Formulation &amp; Reconstitution</b>	Lyophilized from sterile PBS, pH 7.4. Normally 5% - 8% trehalose is added as protectants before lyophilization. Please see Certificate of Analysis for specific instructions of reconstitution.
<b>Host Species</b>	Humanized
<b>IgG type</b>	Human IgG1(N297Q,E356D,M358L)-lambda2
<b>Reactivity</b>	Human
<b>Target</b>	IL22RA1
<b>Uniprot ID</b>	Q8N6P7
<b>Description</b>	Anti-IL22RA1(temtokibart biosimilar) mAb
<b>Delivery</b>	In Stock
<b>Storage&amp;Shipping</b>	Store at -20°C to -80°C for 12 months in lyophilized form. After reconstitution, if not intended for use within a month, aliquot and store at -80°C (Avoid repeated freezing and thawing). Lyophilized antibodies are shipped at ambient temperature.
<b>Background</b>	Research grade biosimilar. Not for use in therapeutic or diagnostic procedures for humans or animals.
<b>Usage</b>	Research use only



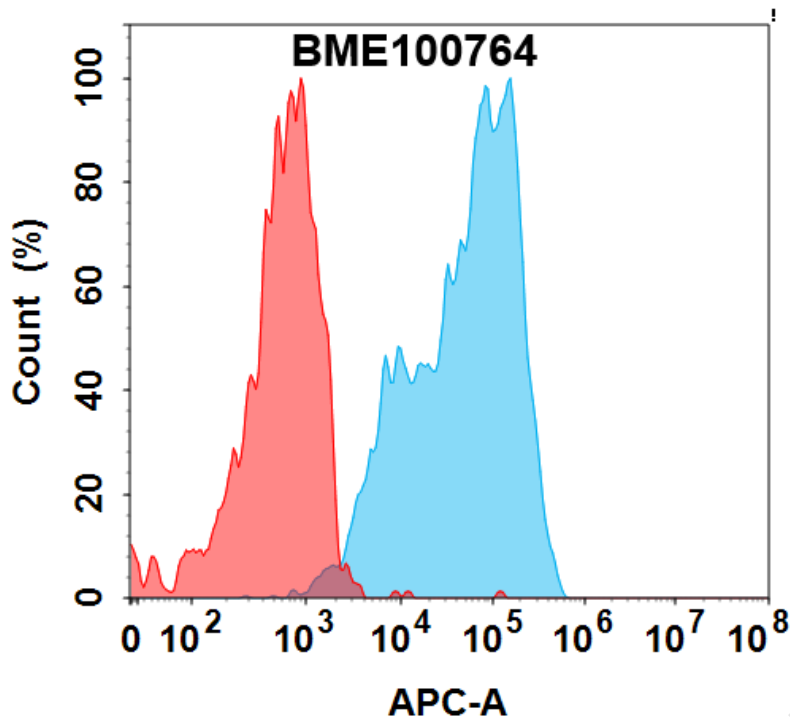


Figure 1. Flow cytometry analysis with 0.5  $\mu\text{g}/\text{mL}$  Anti-IL22RA1(temtokibart biosimilar) mAb (BME100764) on HEK293 cells transfected with Human IL22RA1 protein (Blue histogram) or HEK293 transfected with irrelevant protein (Red histogram).

## Anti-IL22RA1(temtokibart biosimilar) mAb ELISA

0.2  $\mu\text{g}$  of Human IL22RA1, hFc tagged protein per well

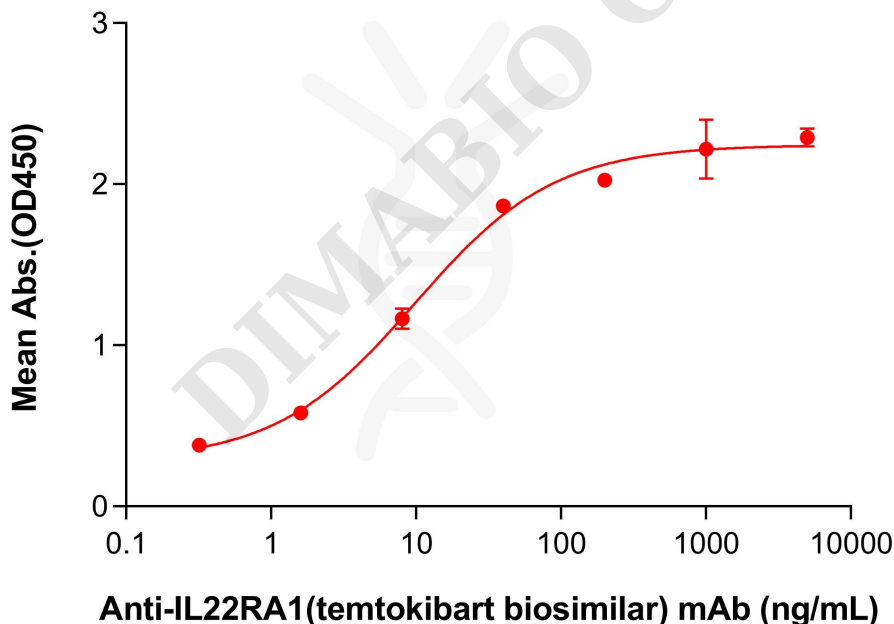


Figure 2. ELISA plate pre-coated by 2  $\mu\text{g}/\text{mL}$  (100  $\mu\text{L}/\text{well}$ ) Human IL22RA1, hFc Tag (PME101824) can bind Anti-IL22RA1(temtokibart biosimilar) mAb (BME100764) in a linear range of 1.6–40 ng/mL. In order to specifically detect BME100764, mouse anti-human Fab-specific antibody was used as detection antibody.

