

PRODUCT INFORMATION

| | |
|------------------------------|---|
| Common Name | ANB-019 |
| Conjugate | Unconjugated |
| Synonyms | ILRL2; IL-36R; IL1RRP2; IL-36R |
| Applications | ELISA, Flow Cyt |
| Recommended Dilutions | ELISA 1:5000-10000, Flow Cyt 1:100 |
| Formulation & Reconstitution | Lyophilized from sterile PBS, pH 7.4. Normally 5 % - 8% trehalose is added as protectants before lyophilization. Please see Certificate of Analysis for specific instructions of reconstitution. |
| Host Species | Chimeric Humanized |
| IgG type | Human IgG4 - Kappa |
| Reactivity | Human |
| Target | IL1RL2 |
| Uniprot ID | Q9HB29 |
| Description | Anti-IL1RL2(imsidolimab biosimilar) mAb |
| Delivery | In Stock |
| Storage & Shipping | Store at -20°C to -80°C for 12 months in lyophilized form. After reconstitution, if not intended for use within a month, aliquot and store at -80°C (Avoid repeated freezing and thawing). Lyophilized antibodies are shipped at ambient temperature. |
| Background | Research grade biosimilar. Not for use in therapeutic or diagnostic procedures for humans or animals. |
| Usage | Research use only |



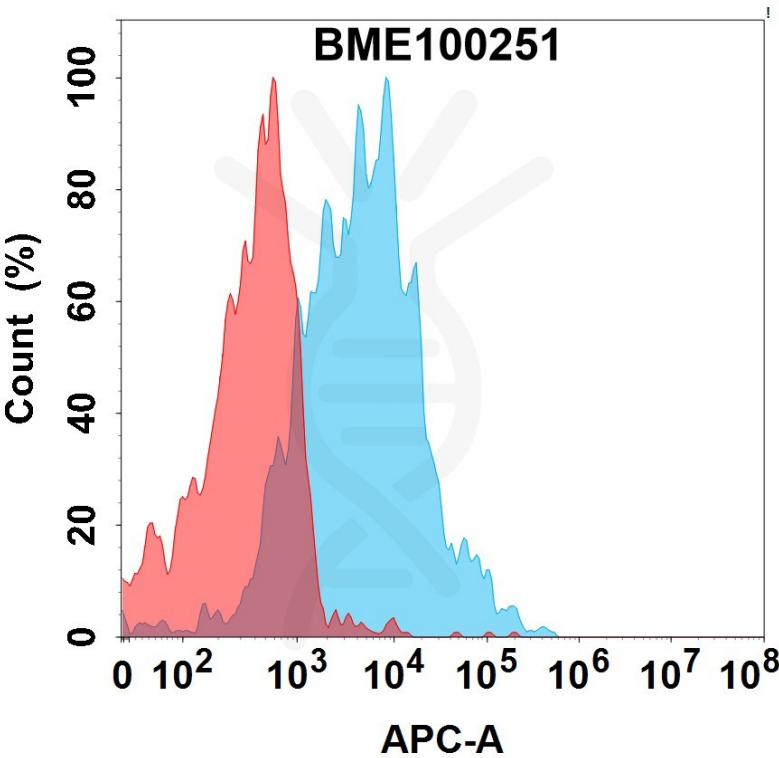


Figure 1. Flow cytometry analysis with 15µg/mL Anti-IL1RL2(imsidolimab biosimilar) mAb (BME100251) on HEK293 cells transfected with Human IL1RL2 protein (Blue histogram) or HEK293 transfected with irrelevant protein (Red histogram).

Anti-IL1RL2(imsidolimab biosimilar) mAb ELISA

0.2 µg of Human IL1RL2, His tagged protein per well

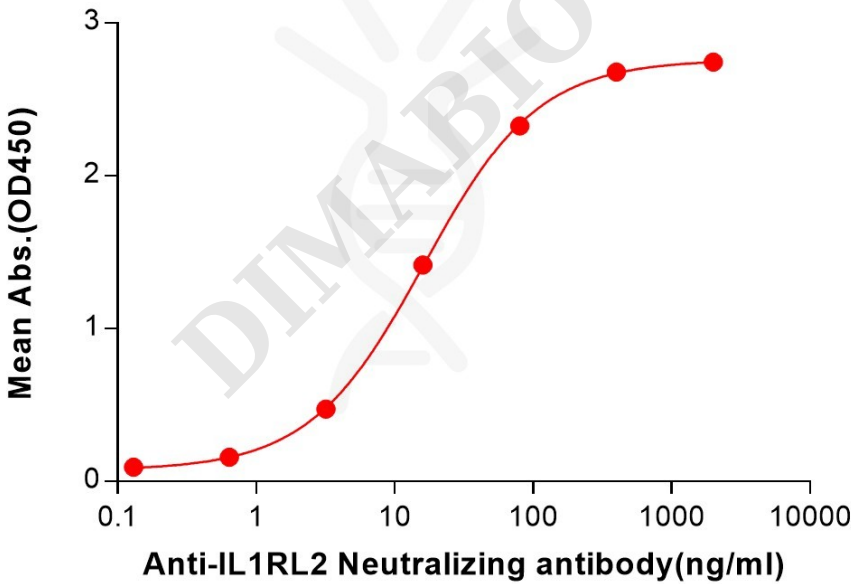


Figure 2. ELISA plate pre-coated by 2 µg/mL (100 µL/well) Human IL1RL2 Protein, His Tag (PME101318) can bind Anti-IL1RL2(imsidolimab biosimilar) mAb (BME100251) in a linear range of 3.20–400 ng/mL.

