

PRODUCT INFORMATION

Clone ID	DMC282
Target	IL11RA
Synonyms	IL-11 R alpha;IL-11 RA;IL11RA;Interleukin-11 receptor subunit alpha;IL-11 receptor subunit alpha;IL-11R subunit alpha;IL-11R-alpha
Host Species	Rabbit
Description	Anti-IL11RA antibody(DMC282); IgG1 Chimeric mAb
Delivery	In Stock
Uniprot ID	Q14626
IgG type	Rabbit/Human Fc chimeric IgG1
Clonality	Monoclonal
Reactivity	Human
Applications	Flow Cyt
Recommended Dilutions	Flow Cyt 1:100
Purification	Purified from cell culture supernatant by affinity chromatography
Formulation & Reconstitution	Lyophilized from sterile PBS, pH 7.4. Normally 5 % - 8% trehalose is added as protectants before lyophilization. Please see Certificate of Analysis for specific instructions of reconstitution.
Storage & Shipping	Store at -20°C to -80°C for 12 months in lyophilized form. After reconstitution, if not intended for use within a month, aliquot and store at -80°C (Avoid repeated freezing and thawing). Lyophilized proteins are shipped at ambient temperature.
Background	Interleukin 11 is a stromal cell-derived cytokine that belongs to a family of pleiotropic and redundant cytokines that use the gp130 transducing subunit in their high affinity receptors. This gene encodes the IL-11 receptor; which is a member of the hematopoietic cytokine receptor family. This particular receptor is very similar to ciliary neurotrophic factor; since both contain an extracellular region with a 2-domain structure composed of an immunoglobulin-like domain and a cytokine receptor-like domain. Multiple alternatively spliced transcript variants have been found for this gene.
Usage	Research use only
Conjugate	Unconjugated
DIMA Disclaimer	All DIMA recombinant antibodies are genuinely generated by DIMA Biotech. They are all under patent application. Any protein sequencing or reverse engineering attempt is prohibited. We are actively scrutinizing all patent application to ensure no IP infringement.



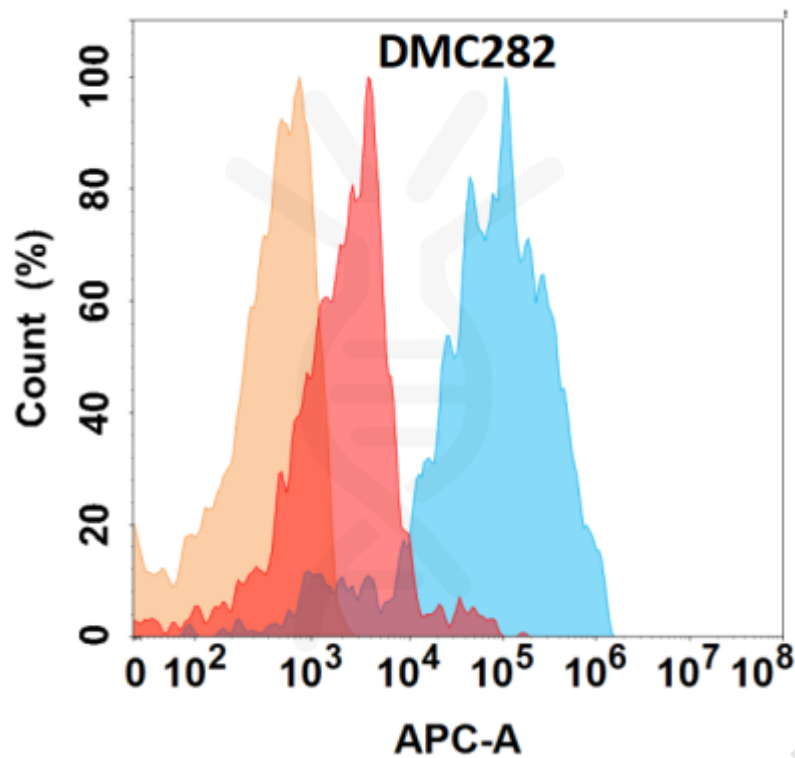


Figure 1. IL11RA protein is highly expressed on the surface of HEK293 cell membrane. Flow cytometry analysis with Anti-IL11RA (DMC282) on HEK293 cells transfected with human IL11RA (Blue histogram) or HEK293 transfected with irrelevant protein (Red histogram), and Isotype antibody on HEK293 transfected with irrelevant protein (Orange histogram).

