

PRODUCT INFORMATION

Clone ID	DM148
Target	IL2RA
Synonyms	IL2RA;CD25;p55;IL2-RA;IL-2-RA
Host Species	Rabbit
Description	Anti-IL2RA antibody(DM148); Rabbit mAb
Delivery	In Stock
Uniprot ID	P01589
IgG type	Rabbit IgG
Clonality	Monoclonal
Reactivity	Human
Applications	ELISA; Flow Cyt
Recommended Dilutions	ELISA 1:5000-10000; Flow Cyt 1:100
Purification	Purified from cell culture supernatant by affinity chromatography
Formulation & Reconstitution	Lyophilized from sterile PBS, pH 7.4. Normally 5 % - 8% trehalose is added as protectants before lyophilization. Please see Certificate of Analysis for specific instructions of reconstitution.
Storage & Shipping	Store at -20°C to -80°C for 12 months in lyophilized form. After reconstitution, if not intended for use within a month, aliquot and store at -80°C (Avoid repeated freezing and thawing). Lyophilized proteins are shipped at ambient temperature.
Background	The interleukin 2 (IL2) receptor alpha (IL2RA) and beta (IL2RB) chains; together with the common gamma chain (IL2RG); constitute the high-affinity IL2 receptor. Homodimeric alpha chains (IL2RA) result in low-affinity receptor; while homodimeric beta (IL2RB) chains produce a medium-affinity receptor. Normally an integral-membrane protein; soluble IL2RA has been isolated and determined to result from extracellular proteolysis. Alternately-spliced IL2RA mRNAs have been isolated; but the significance of each is presently unknown. Mutations in this gene are associated with interleukin 2 receptor alpha deficiency.
Usage	Research use only
Conjugate	Unconjugated
DIMA Disclaimer	All DIMA recombinant antibodies are genuinely generated by DIMA Biotech. They are all under patent application. Any protein sequencing or reverse engineering attempt is prohibited. We are actively scrutinizing all patent application to ensure no IP infringement.



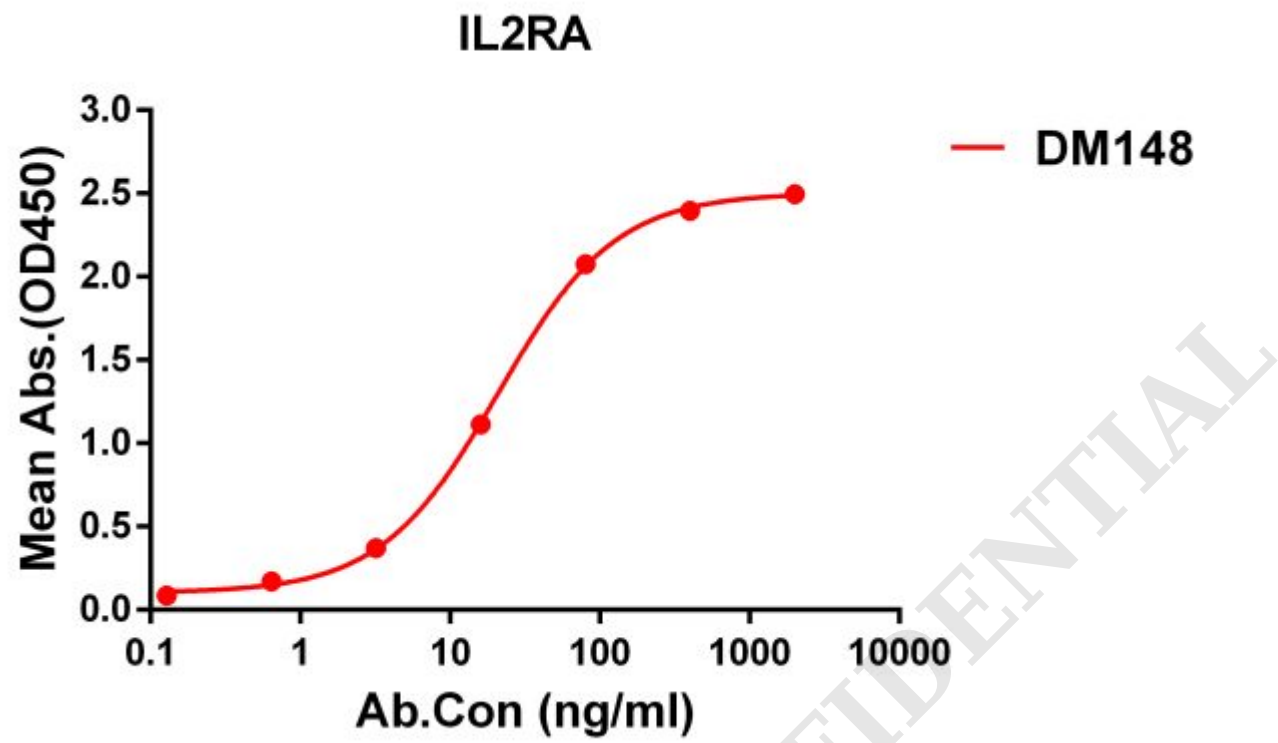


Figure 1. ELISA plate pre-coated by 1 µg/ml (100 µl/well) Human IL2RA protein, His tagged protein ([getskuurl sku="PME100098"]) can bind Rabbit anti-IL2RA monoclonal antibody(**clone: DM148**) in a linear range of 5-100 ng/ml.

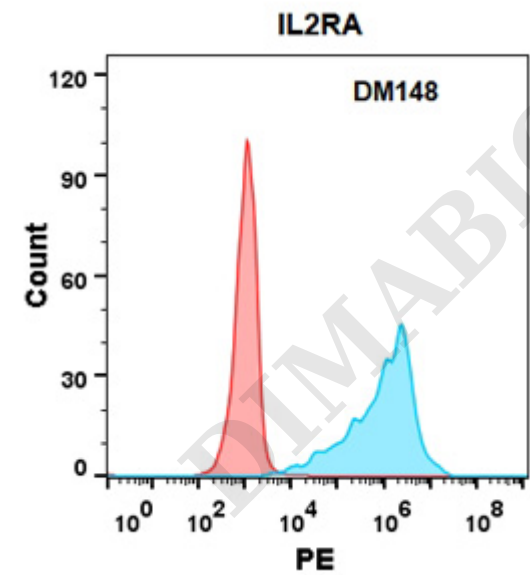


Figure 2. Flow cytometry analysis with Anti-IL2RA (DM148) on HEK293 cells transfected with human IL2RA (Blue histogram) or HEK293 transfected with irrelevant protein (Red histogram).

