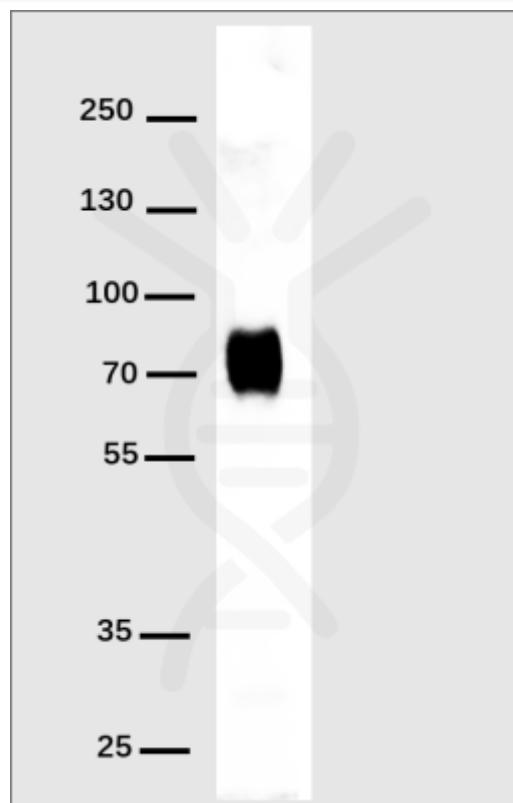


PRODUCT INFORMATION

Clone ID	DM1
Target	His Tag
Synonyms	his tag
Host Species	Rabbit
Description	Anti-His Tag Antibody(DM1); Rabbit mAb
Delivery	In Stock
IgG type	Rabbit IgG
Clonality	Monoclonal
Reactivity	Detects proteins containing accessible consecutive histidine regions. The antibody detects His tags localized at the amino- or carboxyl- terminus.
Applications	ELISA; WB
Recommended Dilutions	WB 1:1000
Purification	Purified from cell culture supernatant by affinity chromatography
Formulation & Reconstitution	Lyophilized from sterile PBS, pH 7.4. Normally 5 % - 8% trehalose is added as protectants before lyophilization. Please see Certificate of Analysis for specific instructions of reconstitution.
Storage & Shipping	Store at -20°C to -80°C for 12 months in lyophilized form. After reconstitution, if not intended for use within a month, aliquot and store at -80°C (Avoid repeated freezing and thawing). Lyophilized proteins are shipped at ambient temperature.
Background	The rabbit immune system generates antibody diversity and optimizes affinity. Anti-His Tag Antibody(DM1); Rabbit mAb is specific to six histidine tags placed at C-terminal and internal regions of fusion proteins. This antibody can greatly improve the effectiveness of several different kinds of immunoassays; helping researchers identify; detect; and purify polyhistidine fusion proteins in bacteria; insect cells; and mammalian cells.
Usage	Research use only
Conjugate	Unconjugated
DIMA Disclaimer	All DIMA recombinant antibodies are genuinely generated by DIMA Biotech. They are all under patent application. Any protein sequencing or reverse engineering attempt is prohibited. We are actively scrutinizing all patent application to ensure no IP infringement.





Western blot analysis of his-tag fusion protein using His-Tag antibody (DME100001) at 1:1000 dilution.
Secondary antibody: HRP Goat Anti-Rabbit IgG (H L) at 1:5000 dilution.
His-tag fusion protein : 70kDa, 20ng per lane.
Blocking buffer: 5% nonfat dry milk in TBST.
Exposure time: 1s.

