

PRODUCT INFORMATION

Uniprot ID	Q9NZD1 and P07766
Common Name	LBL-034
Conjugate	Unconjugated
Synonyms	GPRC5D; CD3
Applications	ELISA, Flow Cyt
Recommended Dilutions	ELISA 1:5000-10000, Flow Cyt 1:100
Formulation & Reconstitution	Lyophilized from sterile PBS, pH 7.4. Normally 5 % - 8% trehalose is added as protectants before lyophilization. Please see Certificate of Analysis for specific instructions of reconstitution.
Host Species	Humanized
IgG type	Human IgG1 - kappa
Reactivity	Human
Target	GPRC5D and CD3
Description	Anti-GPRC5D and CD3(LBL-034 biosimilar) BsAb
Delivery	In Stock
Storage & Shipping	Store at -20°C to -80°C for 12 months in lyophilized form. After reconstitution, if not intended for use within a month, aliquot and store at -80°C (Avoid repeated freezing and thawing). Lyophilized antibodies are shipped at ambient temperature.
Background	Research grade biosimilar. Not for use in therapeutic or diagnostic procedures for humans or animals.
Usage	Research use only
DIMA Disclaimer	All DIMA recombinant antibodies are genuinely generated by DIMA Biotech. They are all under patent application. Any protein sequencing or reverse engineering attempt is prohibited. We are actively scrutinizing all patent application to ensure no IP infringement.



Anti-GPRC5D and CD3(LBL-034 biosimilar) BsAb ELISA
0.2 µg of Human GPRC5D, mFc tagged protein per well

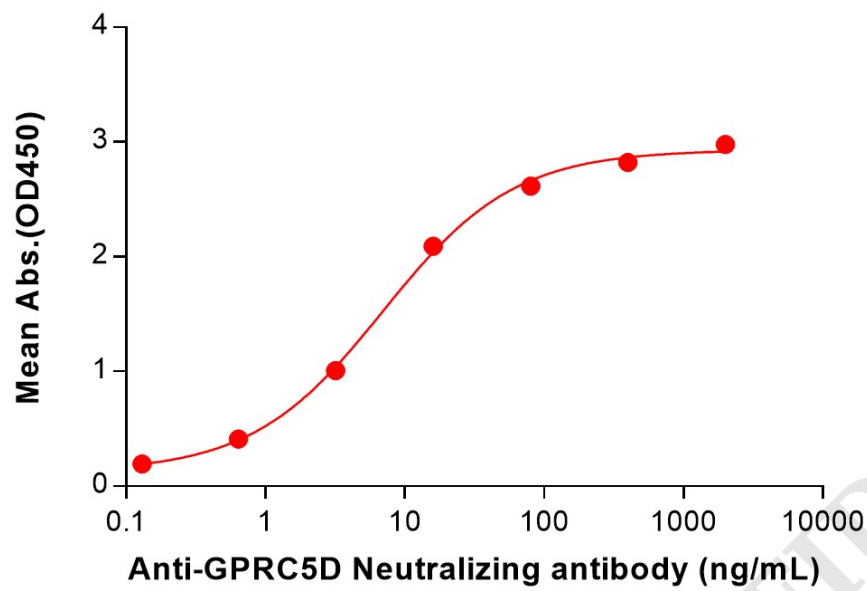


Figure 1. ELISA plate pre-coated by 2 µg/mL (100 µL/well) Human GPRC5D Protein, mFc Tag (PME100559) can bind Anti-GPRC5D and CD3(LBL-034 biosimilar) BsAb (BME100196) in a linear range of 0.64-80 ng/mL.

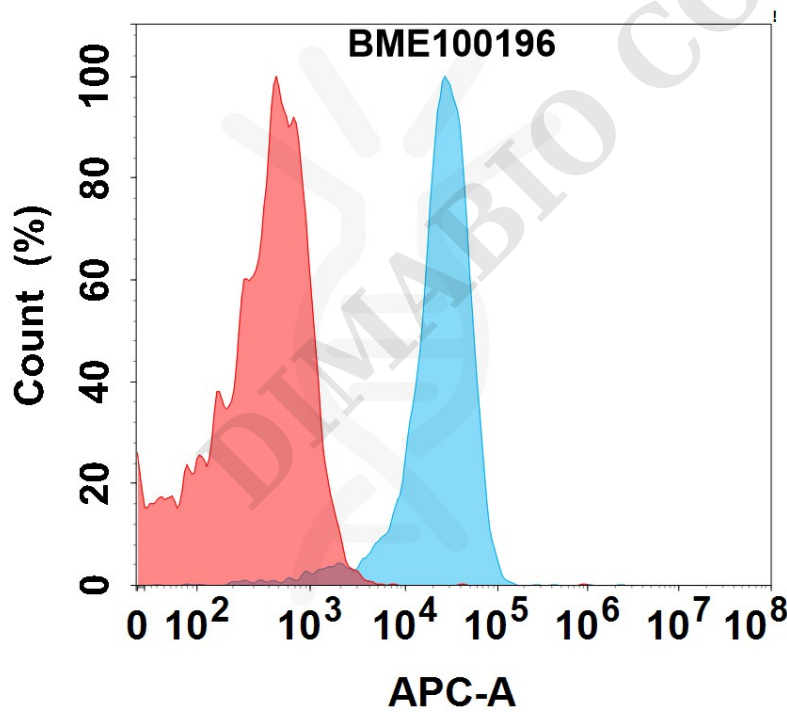


Figure 2. Flow cytometry analysis with 1µg/mL Anti-GPRC5D and CD3(LBL-034 biosimilar) BsAb (BME100196) on K562-GPRC5D cells (Blue histogram) or isotype control bsAb on K562 cells (Red histogram).

