

PRODUCT INFORMATION

Clone ID	12B6
Target	GPR75
Synonyms	Probable G-protein coupled receptor 75
Host Species	Rabbit
Description	Anti-GPR75 antibody(12B6), Rabbit mAb
Delivery	In Stock
Uniprot ID	O95800
IgG type	Rabbit IgG
Clonality	Monoclonal
Reactivity	Human
Applications	Flow Cyt
Recommended Dilutions	Flow Cyt 1/100
Purification	Purified from cell culture supernatant by affinity chromatography
Formulation & Reconstitution	Lyophilized from sterile PBS, pH 7.4. Normally 5 % - 8% trehalose is added as protectants before lyophilization. Please see Certificate of Analysis for specific instructions of reconstitution.
Storage & Shipping	Store at -20°C to -80°C for 12 months in lyophilized form. After reconstitution, if not intended for use within a month, aliquot and store at -80°C (Avoid repeated freezing and thawing). Lyophilized proteins are shipped at ambient temperature.
Background	GPR75 is a member of the G protein-coupled receptor family. GPRs are cell surface receptors that activate guanine-nucleotide binding proteins upon the binding of a ligand.[supplied by OMIM, Jul 2002]
Usage	Research use only
Conjugate	Unconjugated
DIMA Disclaimer	All DIMA recombinant antibodies are genuinely generated by DIMA Biotech. They are all under patent application. Any protein sequencing or reverse engineering attempt is prohibited. We are actively scr



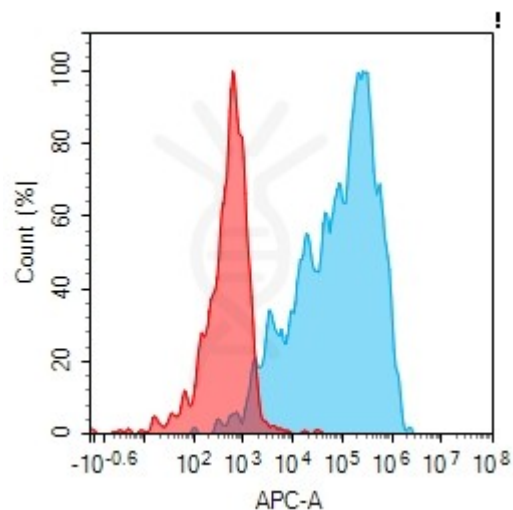


Figure 1. Flow cytometry analysis with 10 μ g/mL Anti-GPR75 (12B6) mAb on HEK293 cells transfected with human GPR75 (Blue histogram) or HEK293 transfected with irrelevant protein (Red histogram).

