

PRODUCT INFORMATION

Clone ID	1E10
Target	GPR20
Synonyms	G-protein coupled receptor 20
Host Species	Rabbit
Description	Anti-GPR20 antibody(1E10), Rabbit mAb
Delivery	In Stock
Uniprot ID	Q99678
IgG type	Rabbit IgG
Clonality	Monoclonal
Reactivity	Human
Applications	Flow Cyt
Recommended Dilutions	Flow Cyt 1/100
Purification	Purified from cell culture supernatant by affinity chromatography
Formulation & Reconstitution	Lyophilized from sterile PBS, pH 7.4. Normally 5 % - 8% trehalose is added as protectants before lyophilization. Please see Certificate of Analysis for specific instructions of reconstitution.
Storage & Shipping	Store at -20°C to -80°C for 12 months in lyophilized form. After reconstitution, if not intended for use within a month, aliquot and store at -80°C (Avoid repeated freezing and thawing).
Background	Enables G protein-coupled receptor activity. Predicted to be involved in positive regulation of Rho protein signal transduction and positive regulation of cytosolic calcium ion concentration involved in phospholipase C-activating G protein-coupled signaling pathway. Located in cytosol and plasma membrane. Is integral component of plasma membrane. Part of receptor complex. [provided by Alliance of Genome Resources, Apr 2022]
Usage	Research use only
Conjugate	Unconjugated



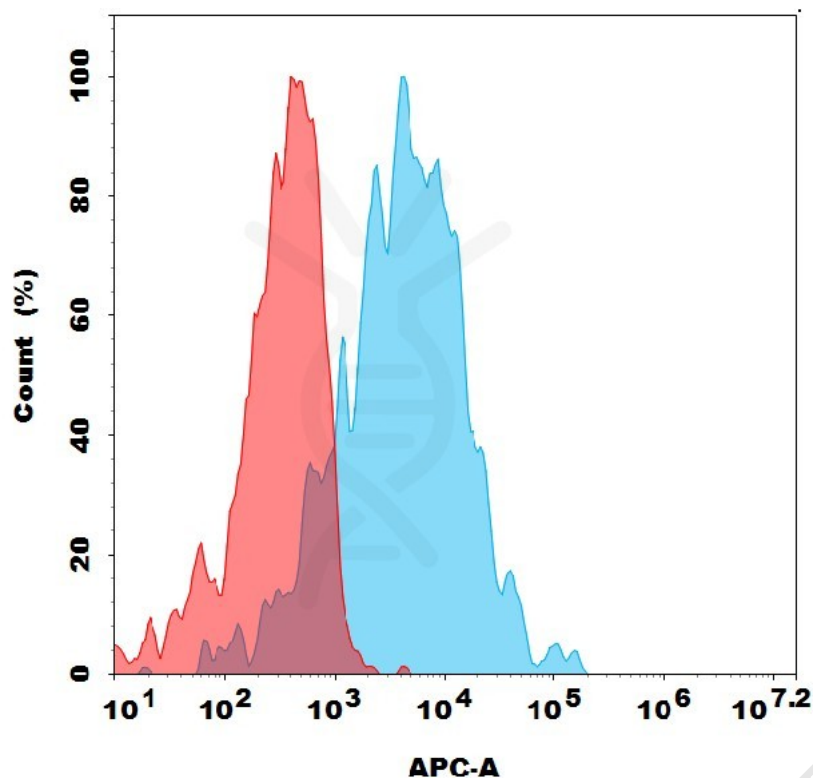


Figure 1. Flow cytometry analysis with 2 $\mu$ g/mL Anti-GPR20 (1E10) mAb on HEK293 cells transfected with human GPR20 (Blue histogram) or HEK293 transfected with irrelevant protein (Red histogram).

